

IMPORTANT

*Report in part or whole
cannot be quoted or
reproduced*

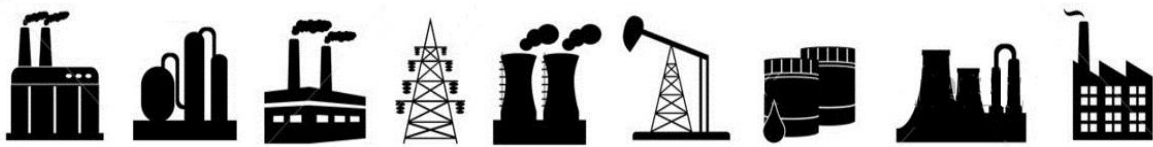
RESTRICTED

For official use only

APRIL 2025



**MONTHLY SURVEY OF INDUSTRIAL
PRODUCTION & EMPLOYMENT IN THE PUNJAB**



BUREAU OF STATISTICS

Planning & Development Board
Government of the Punjab, Lahore
www.bos.gop.pk

PREFACE

Bureau of statistics has been issuing this Monthly Survey of Industrial Production and Employment Report since October 1972. This report provides important statistics in respect of industrial production & employment, employment cost and other aspects of manufacturing activities e.g. consumption of raw material, export of industrial products, import of raw material and productivity of labour etc. These statistics are pre-requisite for sound economic planning as well as for measuring the performance/growth of the industrial sector (GDP estimates regarding industrial sector).

This report contains statistics regarding 46 important industries, manufacturing about almost selected items, contributing 72% of the total value added of large scale manufacturing sector in the province. This report covers more than 2000 industrial units from all over the Punjab.

This report gives information regarding General Index as compared to base period 2005-06, and comprehensive analytical note over the current status of the industrial growth at different sectors. Tables of production & employment give comparisons with the previous month and the same month of the previous year as well as comparisons among financial periods. Performance analysis of 13 major items pertaining to detailed tables & graphical explanation is given in this report.

All possible efforts have been made to incorporate the latest available data in this report. It is hoped that this report will be useful to the policy makers, planners, researchers and other users of industrial/economic data in public as well as private sector.

Suggestions for further improvements will be welcomed.

(SAJID RASUL)
Director General
Bureau of Statistics,
Government of the Punjab

C O N T E N T S

Sr.#	Description	Page #
i	Explanatory Note	I – IV
ii	Table of General Index of Industrial Production	1
iii	Analytical Note: Industrial Production and Employment April 2025	2 - 3

T A B L E S

1	Production Volume of Selected Items Pertaining to Large-Scale Manufacturing Sector, April 2025 VS March 2025	4 - 5
2	Production Volume of Selected Items Pertaining to Large-Scale Manufacturing Sector, April 2025 VS April 2024	6 - 7
3	Production Volume of Selected Items Pertaining to Large-Scale Manufacturing Sector, 2024-25 (Jul - Apr:) VS 2023-24 (Jul – Apr:)	8 - 9
4	Total Employment Regarding Large-Scale Industries, April 2025, March 2025 and April 2024	10
5	Total Number of Production Workers Regarding Large-Scale Industries March 2025, April 2025 and April 2024	11
6	Average Monthly Total Employment Regarding Large-Scale Industries, 2024-25 (Jul - Apr:) VS 2023-24 (Jul - Apr:)	12
7	Average Monthly Number of Production Workers Regarding Selected Large Scale Industries, 2024-25 (Jul - Apr:) VS 2023-24 (Jul – Apr:)	13

A N N E X U R E S

I	Performance of Cotton Textile Industry	14 - 20
II	Performance of Woollen Textile Industry	21 - 23
III	Performance of Vegetable Ghee/Cooking Oil Industry	24 - 28
IV	Performance of Beverages Industry	29 - 30
V	Performance of Sugar Industry	31 - 33
VI	Performance of Cigarettes Industry	34 - 35
VII	Performance of Cement Industry	36 - 40
VIII	Performance of Fertilizer Industry	41 - 46
IX	Performance of Footwear Industry	47 - 48
X	Performance of Leather Tanning Industry	49 - 50
XI	Performance of Paper & Paper Board Industry	51 - 52
XII	Performance of Light Engineering Industry	53 - 59
XIII	Performance of Pharmaceutical Industry	60 - 63

A P P E N D I X

A	Telephone Numbers	64
---	-------------------	----

List of Tables

Table No.	Title of Table	Page No.
1	General Index of Industrial Production	1
2	Production Volume of Selected Items Pertaining to Large-Scale Manufacturing Sector, April -2025 VS March -2025	4
3	Production Volume of Selected Items Pertaining to Large-Scale Manufacturing Sector, April -2025 VS April 2024.	6
4.	Production Volume of Selected Items Pertaining to Large-Scale Manufacturing Sector 2024-25,(July- April) VS 2023-2024 (July- April)	8
5	Total Employment Regarding Selected Large-Scale Industries, March 2025, April 2025 and April 2024.	10
6	Total Number of Production Workers Regarding Selected Large-Scale Industries March 2025, April 2025 and April 2024	11
7.	Average Monthly Total Employment Regarding Selected Large-Scale Industries 2024-25 (July- April) and 2023-24 (July- April)	12
8	Average Monthly Production Workers regarding selected Large-Scale Industries 2024-25 (July- April) and 2023-24 (July- April)	13
9	Production of Man Made/Blended Yarn and Cloth	15
10	Detail of the Purchase, Sale Consumption and Stock of Cotton Bales.	17
11	Production, Purchase, Consumption, Sale and Stock of Cotton Yarn	18
12	Production .Purchase, Sale and Stock of Cotton Cloth	19
13	Employment, Wages/Salaries of Cotton Textile Industry	20
14	Manufacturing Activity of Woollen Industry	23
15	Detail of the Stock Purchase, Consumed and Sale of Edible Oil	26
16	Detail of Production, Sale and Stock of Vegetable Ghee/Cooking Oil	27
17	Employment, Wages/Salaries of Vegetable Ghee/Cooking Oil Industry	28
18	Manufacturing Activity of Beverages Industry	30
19	Manufacturing Activity of Sugar Industry	32
20	Employment, Wages/Salaries of Sugar Industry	33
21	Manufacturing Activity of Cigarettes Industry	35
22	Detail of Production, Consumption and Stock of Clinker	38
23	Detail of Production, Sale and Stock of Cement	39
24	Employment and Wages/Salaries of Cement Industry	40
25	Detail of Production, Sale and Stock of Urea and Amm. Sulphate	43
26	Detail of Production, Sale and Stock of Super Phosphate and Amm.Nitrate	44
27	Detail of Production, Sale and Stock of Nitro Phosphate	45
28	Employment Wages/Salaries of Fertilizer Industry	46
29	Manufacturing Activity of Footwear Industry	48
30	Manufacturing Activity of Leather Tanning Industry	50
31	Manufacturing Activity of Paper and Paper Board Industry	51
32	Manufacturing Activity of Light Engineering Industry	57
33	Total Employment of Light Engineering Industry	58
34	Production Workers of Light Engineering Industry	59
35	Manufacturing Activity of Pharmaceutical Industry	62
36	Employment and Wages/Salaries of Pharmaceutical Industry	63

List of Figures

Fig. No.	Title of Figures	Page No.
1	Quantum Index of Manufacturing Industries	1
2	Production of Cotton Yarn	16
3	Production of Cotton Cloth	16
4	Production of Knitting Wool	21
5	Production of Woollen Yarn	22
6	Production of Woollen and Worsted Cloth	22
7.	Production of Vegetable Ghee	24
8	Production of Cooking Oil	25
9	Production of Vegetable Ghee/Cooking Oil	25
10	Production of Fruit Juices	29
11	Production of Soft Drinks	29
12	Production of Sugar	31
13	Production of Cigarettes	34
14	Production of Clinker	36
15	Production of Cement	37
16	Production of Urea	41
17	Production of Super Phosphate	42
18	Production of Amm. Nitrate	42
19	Production of Nitro Phosphate	42
20	Production of Footwear	47
21	Production of Upper Leather	49
22	Production of Sole Leather	49
23	Production of Paper	51
24	Production of Paper Board	51
25	Production of Re-Rolled Steel	53
26	Production of Bicycles	54
27	Production of Electric Fans	55
28	Production of Electric Motors	56
29	Production of Diesel Engines	56
30	Production of Tablets	60
31	Production of Liquids	61
32	Production of Capsules	61
33	Production of Injections	61

EXPLANATORY NOTE

To have current information on production, employment and other aspects of manufacturing activities e.g. consumption of raw material, wages/salaries, export of industrial products, imports of raw material and productivity of labour etc. for economic planning, evaluation of industrial development and taking other policy related decisions, Government of the Punjab had decided in October 1972 to undertake a Monthly Survey on Industrial Production and Employment.

Prior to this Survey, the only data available on Industrial Statistics was the results of Census of Manufacturing Industries (C.M.I) that were available with the time lag of 2-3 years with a question mark on very high rate of non- response. This high rate of non-response affected the consistency of the results. Therefore, these results were of little use for current and future planning except for historical, research and academic interests/purposes. So Monthly Survey of Industrial Production and Employment was considered to be suitable for Economic Planning as well as for measuring the performance/growth of the industrial sector.

Only 15 industries and their 113 factories were selected to cover initially in October 1972. This report now contains statistics regarding 46 important industries, manufacturing about 100 selected items, contributing 72% of the total value added of large scale manufacturing sector in the province based on base year 2005-06 and covers more than 2000 industrial units from all over the Punjab.

Questionnaire

Keeping in view the pre-determined purpose the data on Industrial Inputs (raw material), Outputs (finished products), Sales, exports, Stocks, Employment & Employment Cost etc. are designed on the available information from CMI returns. These Questionnaires have been pre-tested in some of the large units manufacturing the respective items.

Methodology

Basically it is a mail enquiry. The respondents are the factory owners or the factory management (i.e. Accountants, Finance Manager, and Mill Manager etc.) The blank questionnaires of various industries are used to be mailed out to the factories for their use for the supply of the required information every month. About 60% to 70% questionnaires are received through mail. While the remaining non-responding industrial units are visited by the officers/officials of this Bureau during the third week of the following month for collection of requisite information.

Editing

The received questionnaires are statistically examined for the accuracy and consistency by comparing the production and employment levels of the current month with previous month and same month of the last year. The information of the factories which could not be collected during the month due to the absence of the concerned person or due to other reason is estimated on the basis of the last months average production or the last month information is repeated.

Tabulation

The information collected is tabulated on working sheets prepared for this purpose and also on computer for each industry/factory. Seven tables are prepared every month on production, total employment and production workers as well as comparisons are made with respect to last month, with same month of the last year and among current & previous financial years.

General index / Quantum Index of Manufacturing (QIM)

At present Punjab Bureau of Statistics is computing Index on Industrial Production using 2005-06 as base year. Index series is given in this report by using Laspayer's Index since 2006-07.

This Bureau initially prepared Index Series using 1970-71 as base year. Later on the base year was shifted to 1980-81 & then in October 2011 the base year was sifted to 2005-06. Majority of some new items are included in the new index series due to their relative weight and some items were discarded due to their negligible weights.

Formula of Quantum Index

$$QIM = \frac{\sum_{i=1}^n \frac{q_{im}}{q_{io}} w_i}{\sum_{i=1}^n w_i} \times 100$$

q_{im} = Production of i^{th} item during the current month

q_{io} = Average Production of the same i^{th} item in the base period (2005-06).

w_i = Weight of the i^{th} item in the base year (2005-06).

$\sum w_i$ = total weight of 46 large scale industries in the base period with respect to the total value added of all the industries covered in CMI in the base year (2005-06).

Final Product

Final product is a CIS report that contains QIM series, analytical note on the performance of Industrial Sector in the province, seven tables, and detailed performance report of some important industries as well.

User Agencies

- i. Ministry of Industries & Production, Government of the Pakistan, Islamabad.
- ii. Pakistan Bureau of Statistics, Government of Pakistan, Islamabad.
- iii. Provincial Bureaus of Statistics, Government of Sindh, KPK and Baluchistan.
- iv. Planning & Development Department, Government of the Punjab.
- v. Punjab Economic Research Institute (PERI).
- vi. Department of Commerce & Industry, Government of the Punjab.
- vii. State Bank of Pakistan

IMPORTANT DEFINITIONS

Factory

An entity where manufacturing process is carried out on any day of the preceding thirty days and in any part of which manufacturing process is being carried on with or without the aid of power or through chemical process. It does not include the Mine subject which comes under the operation of Mines Act 1923.

Large Scale Manufacturing Industries

Establishments where ten or more employees are working are classified as large scale industry.

Employment

This item include all full time and part time employees on the payrolls of operating manufacturing establishment during any part of the pay period of the month specified on the questionnaire. It should include all the employees on paid sick leave paid holidays, and paid vacations. Proprietors and partners of unincorporated business may not be included.

Production Workers

The “Production Workers” includes workers (up through the line-supervisor level) engaged in fabricating, processing, assembling, inspecting, receiving, storing, handling, packing, ware-housing, shipping (but no delivering), maintenance, repair, product development, auxiliary production for plant’s own use (e.g., power plant). Record keeping and other services closely associated with these production operations at the establishment covered by the report.

Non-Production Workers

The employees those are not involved directly in the manufacturing process are called non-production workers. E.g. Managers, Assistants, Clerks, Drivers, Peons, Malies and Chowkidars etc.

Employment Cost

Wages and salaries of all employees including production and non-production workers is called employment cost.

TABLE 1: GENERAL INDEX OF INDUSTRIAL PRODUCTION
FOR THE PERIOD JULY 2018 – APRIL 2025
(2005-06=100)

MONTH/ YEAR	2018 - 19	2019 - 20	2020 - 21	2021 - 22	2022 - 23	2023 - 24	2024-25
JUL:	156.5	155.5	160.2	171.1	161.6	157.5	153.6
AUG:	154.3	152.8	155.2	171.8	165.9	164.0	156.7
SEP:	158.1	159.3	169.3	171.0	170.9	163.2	157.4
OCT:	168.7	171.7	176.5	177.6	172.2	159.4	158.5
NOV:	160.6	167.8	179.5	185.1	171.5	159.8	171.4
DEC:	168.7	182.2	216.6	213.2	221.8	208.3	203.7
JAN:	210.3	202.2	208.5	220.5	229.3	223.6	207.2
FEB:	198.9	203.5	207.4	225.1	238.0	224.1	210.2
MAR:	251.9	186.9	213.6	217.8	214.3	181.5	187.1
APR:	197.9	140.0	188.4	183.9	163.6	161.4	164.4
MAY:	175.3	140.0	179.3	172.3	160.9	161.8	
JUN:	160.0	146.3	172.3	181.3	160.3	157.1	
Average*	178.1	166.0	184.5	189.8	183.7	175.2	175.7

* = Geometric Mean

Fig. 1 **Graph of Quantum Index of Manufacturing Industries.**
(2005-06=100)

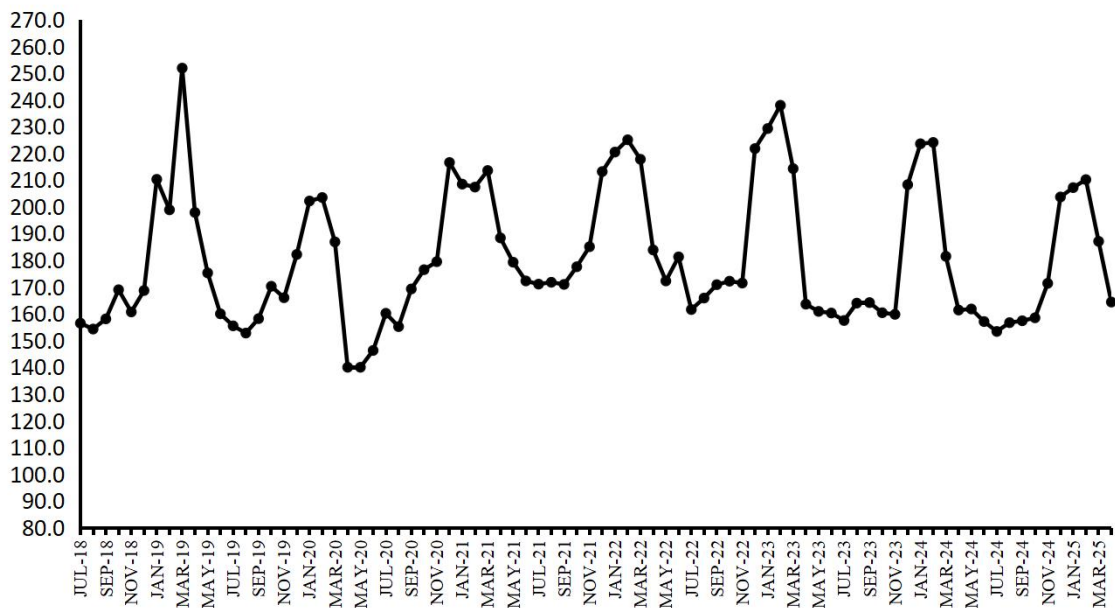


Figure: Graph of QIM for the period of July 2018 to April 2025

ANALYTICAL ANALYSIS

INDUSTRIAL PRODUCTION AND EMPLOYMENT (April 2025)

Coverage

This report covers 2030 industrial units pertaining to large scale industries which contribute about 72 percent of the total value added of Large-Scale Manufacturing sector in the Punjab.

Industrial Production Index

Industrial Production Index for the month of April-2025 stood at 164.4 against 187.1 and 161.4 as compared to March-2025 and April-2024 respectively. Index Series since July-2018 is given in Table-1 on previous page.

Production April 2025 VS March 2025 (Table-2)

Overall production during the month of April -2025 was 12.1 percent lower than March-2025.

The production was lower in case of Dairy Products (7.9%), Soft Drinks & Juices (10.9%), Paper & Paper Board (11.7%), Basic Inorganic Chemicals/Acids (7.6%), Fabricated Metal Products/HMC (6.3%), Tractors (21.1%) and Safety Razor and Blades (7.2%).

Production April 2025 VS April 2024 (Table-3)

Overall production during April-2025 was 1.9 percent lower than April-2024.

The production was lower in case of Cotton/M. M Blended Yarn (11.6%), Cloth/M. M Blended Cloth (11.5%), Jute Textiles (23.6%), Upper Leather (5.8%), Basic Inorganic Chemicals/Acids (19.9%), Paints & Varnishes (8.1%), Fabricated Metal Products/HMC (6.3%), Tractors (74.9%), Automobiles Cars/Trucks (6.9%) and Electric Meters (16.8%)

The production was higher in case of Dairy Products (16.3%), Wheat Milling (5.8%), Soft Drinks & Juices (11.2%), Cigarettes (73.5%), Woolen Textiles (14.4%), Paper & Paper Board (16.8%) Fertilizers (6.2%), Cement (17.7%), Steel Bars/ Angles (8.9%), Motor Cycles (30.2%), Bicycles (5.4%), Electric Fans (8.0%), Electric Motors (6.5%), Air-Conditioners (6.4%) and Refrigerators/Deep Freezers (31.6%).

Production July-April 2024-25 VS July-April 2023-24 (Table-4)

Overall production during July-April (2024-25) was 1.5 percent lower than July-April (2023-24).

The production was lower in case of Sugar (8.3%), Cotton/M. M Blended Yarn (8.6%), Cloth/M. M Blended Cloth (17.1%), Jute Textiles (21.4%), Paints & Varnishes (6.3%), Petroleum Products (10.2%), Tractors (61.9%), Diesel Engines (7.6%), Electric Meters (26.8%) and Agricultural Implements (11.9%).

The production was higher in case of Dairy Products (30.2%), Wheat Milling (6.1%), Soft Drinks & Juices (14.2%), Cigarettes (46.2%), Woolen Textiles (14.4%), Footwear (8.4%), Basic Inorganic Chemicals/Acids (5.3%), Tyres & Tubes (5.1%), Steel Bars/Angles (8.2%), Fabricated Metal Products/HMC (19.6%), Automobiles Cars/Trucks (7.0%), Motor Cycles (21.1%), Bicycles (7.3%), Electric Fans (13.2%), Air-Conditioners(8.4%) and Refrigerators/Deep Freezers (18.1%).

Employment April 2025 VS March 2025 and April 2024 (Table-5)

Total employment during April 2025 was 3.5 percent lower and 3.7 percent lower than March 2025 and April 2024 respectively.

Average Employment July-April 2024-25 VS July-April 2023-24 (Table-7)

Average monthly employment during the period of July-April (2024-25) was 0.3 percent higher than the corresponding period of the previous year.

Table 2: Production Volume of Selected Items Pertaining to Large-Scale Manufacturing Sector, April 2025 VS March 2025

Group/Items	No. of Units Covered in Apr: 2025	Weight with 2005-06 base	Unit of Quantity	Production		Index of Production in Apr: 2025 with Mar: 2025
				Apr: 2025	Mar: 2025	
I Food Drinks & Tobacco	910					
1 Vegetable Ghee/Cooking Oil	44	5.00	M.Tons	105770	105545	100.2
i) Vegetable Ghee	44		M.Tons	84650	84545	100.1
ii) Cooking Oil	18		M.Tons	21120	21000	100.6
2 Dairy Products	8	4.13				92.1
i) Process/UHT Milk		1.62	'000' Litres	43283	44584	97.1
ii) Milk Powder		0.87	M.Tons	1567	1615	97.0
iii) Cheese		0.01	M.Tons	802	888	90.3
iv) Butter/ Desi Ghee		0.33	M.Tons	592	430	137.7
v) Cream		1.04	M.Tons	998	1126	88.6
vi) Yoghurt		0.26	M.Tons	0		
3 Wheat Milling	776	1.25	M.Tons	896637	891746	100.5
4 Sugar	44	3.77	M.Tons	0	475646	
5 Tea (Blended)	3	0.03	M.Tons	6762	7564	89.4
6 Starch & its Products	2	0.56	M.Tons	37127	37332	99.5
i) Starch			M.Tons	23018	23117	99.6
ii) Glucose			M.Tons	14109	14215	99.3
7 Soft Drinks & Juices	30	0.82	'000' Litres	250209	280842	89.1
i) 7-up Coca Cola etc.	17		'000' Litres	229851	261075	88.0
ii) Fruit Juices	16		'000' Litres	18849	18392	102.5
iii) Syrups & Squashes	2		'000' Litres	1509	1375	109.7
8 Cigarettes	3	0.59	M. Nos	1532	1530	100.1
II Textiles	312					
1 Cotton Textiles	285					
i) Cotton/M. M Blended Yarn	247	15.40	M.Tons	109406	109610	99.8
ii) Cloth/M. M Blended Cloth	48	10.20	000 Mtrs.	45445	45537	99.8
2 Woolen Textiles	21	0.52	M.Tons	777	796	97.6
i) Woolen Yarn	14		M.Tons	761	780	97.6
ii) Knitting Wool	3		M.Tons	0	0	
iii) Woolen & Worsted Cloth	14		M.Tons	16	16	100.0
iv) Carpets	5	0.77	000 Mtrs.	0	0	
3 Jute Textiles	6	0.28	M.Tons	3694	3664	100.8
i) Jute Sacking				2164	2156	100.4
ii) Jute Hessian				1165	1153	101.0
iii) Jute Twine				365	355	102.8
III Leather Rubber & Plastic Products	147					
1 Leather Tanning	106					
i) Upper Leather	95	0.49	000 Sq. Mtrs.	753	786	95.8
ii) Sole Leather	11		M.Tons	16	16	100.0
2 Footwear	41	0.90	000 Pairs	3166	3198	99.0
IV Ply Wood	6	0.44	000 Sq. Feet	610	635	96.1
V Paper & Paper Board	47	4.19	M.Tons	55960	63357	88.3
1 Paper				19328	22124	87.4
i) Writing			M.Tons	8425	9606	87.7
ii) Printing			M.Tons	3702	5351	69.2
iii) Packing & Others			M.Tons	7201	7167	100.5
2 Paper Board			M.Tons	36632	41233	88.8
VI Chemical & Petroleum Products	139					
1 Pharmaceuticals	36	1.15				97.3
i) Tablets	28	0.38	000 Nos.	298584	310221	96.2
ii) Liquids (Syrups & Drops)	27	0.48	000 Ltrs.	1576	1643	95.9
iii) Capsules	19	0.08	000 Nos.	55101	54846	100.5
iv) Injections	12	0.14	000 Nos.	13769	13791	99.8
v) Ointments	7	0.03	Kgs.	53226	48491	109.8
vi) Galenicals	6	0.04	000 Ltrs.	3	3	100.0
2 Basic Inorganic Chemicals/Acids	8	1.34		81717	88398	92.4
i) Caustic Soda	2		M.Tons	18639	23258	80.1
ii) Hydrochloric Acid	2		M.Tons	32643	38411	85.0
iii) Chlorine Liquids	2		M.Tons	1416	1412	100.3
iv) Soda Ash	2		M.Tons	27986	24191	115.7
v) Sulphuric Acid	5		M.Tons	1033	1126	91.7

Group/Items	No. of Units Covered in Apr: 2025	Weight with 2005-06 base	Unit of Quantity	Production		Index of Production in Apr: 2025 with Mar: 2025
				Apr: 2025	Mar: 2025	
3 Fertilizers	7	7.18	M.Tons	467898	455869	102.6
i) Urea	4		M.Tons	329967	315869	104.5
ii) Amm. Nitrate	1		M.Tons	70500	71000	99.3
iii) Amm. Sulphate	0		M.Tons	0	0	
iv) Super Phosphate	1		M.Tons	0	0	
v) Nitro Phosphate	1		M.Tons	67431	69000	97.7
4 Paints & Varnishes	12	0.65		9974	9935	100.4
i) Paints		0.01	M.Tons	7148	7130	100.3
			'000' Litres	2796	2775	100.8
ii) Varnishes		1.04	M.Tons	16	16	100.0
		0.26	'000' Litres	14	14	100.0
5 Tyres & Tubes	6	0.12	'000' Nos.	3537	3518	100.5
i) Cycle Tyres				401	398	100.8
ii) Automobile Tyres				495	489	101.2
iii) Cycle Tubes				608	604	100.7
iv) Automobile Tubes				2033	2027	100.3
6 Soap	62	0.07	M.Tons	21557	21464	100.4
i) Toilet Soap	7			3729	3712	100.5
ii) Washing Soap	62			17828	17752	100.4
7 Matches	2	0.00	M. Box * 40 Sticks	730	735	99.3
8 Synthetic Fibre	4	0.95	M.Tons	43455	43541	99.8
9 Petroleum Products	2	0.99	'000' Litres	544498	540105	100.8
i) Petrol (LPG)			'000' Litres	15196	14895	102.0
ii) J.P.			'000' Litres	43537	45487	95.7
iii) White Kerosene			'000' Litres	2650	7594	34.9
iv) H.S. Diesel			'000' Litres	175453	172741	101.6
v) Diesel Fuel			'000' Litres	210	87	241.4
vi) Furnace Fuel			'000' Litres	93310	96242	97.0
vii) Solvent Oil			'000' Litres	0	0	
viii) Lubricating Oil			'000' Litres	0	0	
ix) Bitumen 80/100			'000' Litres	16150	13215	122.2
x) Blown Bitumen Products			'000' Litres	0	0	
xi) Premium M.G.			'000' Litres	197992	189844	104.3
xii) Naphtha			'000' Litres	0	0	
VII Non-Metalic & Mineral	20					
1 Glass Sheets	9	0.19	M.Tons	24545	24612	99.7
2 Cement	11	3.91	M.Tons	1685463	1763106	95.6
VIII Engineering Products	449					
1 Steel Bars/ Angles	41	1.06	M.Tons	24701	24251	101.9
2 Fabricated Metal Products/HMC	1	0.53	M.Tons	15	16	93.8
3 Tractors	4	0.86	Nos.	980	1242	78.9
4 Automobiles Cars/Trucks	1	1.65	Nos.	563	575	97.9
5 Diesel Engines	15	0.06	Nos.	123	119	103.4
6 Motor Cycles	17	0.13	Nos.	112733	116200	97.0
7 Bicycles	3	0.15	Nos.	14485	14571	99.4
8 Electric Fans	116	0.11	Nos.	244826	235353	104.0
i) Ceiling				162845	158366	102.8
ii) Pedestal				39997	38149	104.8
iii) Others				41984	38838	108.1
9 Electric Transformers	3	0.00	Nos.	1713	1493	114.7
10 Electric Motors	30	0.52	Nos.	1480	1449	102.1
11 Switch Gears	3	0.01	Nos.	430	726	59.2
12 Washing Machines	20	0.00	Nos.	34837	35648	97.7
13 Electric Meters	4	0.19	Nos.	146249	140549	104.1
14 Air-Conditioners	5	0.14	Nos.	8025	7993	100.4
15 Refrigerators/Deep Freezers	5	0.31	Nos.	47178	45051	104.7
16 Safety Razor Blades	1	0.14	Mill. Nos.	77	83	92.8
17 Agricultural Implements	151	0.38	Nos.	1080	1092	98.9
i) Chaff Cutter	54			675	682	99.0
ii) Sugarcane Machines	35			3	3	100.0
iii) Wheat Thrashers	30			60	63	95.2
iv) Others (Misc. Imp.)	43			342	344	99.4
18 Textiles Machinery	29	0.01		54	56	96.4
i) Power Looms	20		Nos.	50	52	96.2
ii) Bobbins	5		000 Nos.	0	0	
iii) Shuttles	6		000 Nos.	4	4	100.0
General Index	2030	72.14		164.4	187.1	87.9

Table 3: Production Volume of Selected Items Pertaining to Large-Scale Manufacturing Sector, April 2025 VS April 2024

Group/Items	No. of Units Covered in Apr: 2025	Weight with 2005-06 base	Unit of Quantity	Production		Index of Production in Apr: 2025 with Apr: 2024
				Apr: 2025	Apr: 2024	
I Food Drinks & Tobacco	910					
1 Vegetable Ghee/Cooking Oil	44	5.00	M.Tons	105770	109067	97.0
i) Vegetable Ghee	44		M.Tons	84650	87455	96.8
ii) Cooking Oil	18		M.Tons	21120	21612	97.7
2 Dairy Products	8	4.13				116.3
i) Process/UHT Milk		1.62	'000' Litres	43283	39132	110.6
ii) Milk Powder		0.87	M.Tons	1567	959	163.4
iii) Chees		0.01	M.Tons	802	322	249.1
iv) Butter/ Desi Ghee		0.33	M.Tons	592	525	112.8
v) Cream		1.04	M.Tons	998	871	114.6
vi) Yoghurt		0.26	M.Tons	0	0	
3 Wheat Milling	776	1.25	M.Tons	896637	847256	105.8
4 Sugar	44	3.77	M.Tons	0	0	
5 Tea (Blended)	3	0.03	M.Tons	6762	7035	96.1
6 Starch & its Products	2	0.56	M.Tons	37127	36578	101.5
i) Starch			M.Tons	23018	22577	102.0
ii) Glucose			M.Tons	14109	14001	100.8
7 Soft Drinks & Juices	30	0.82	'000' Litres	250209	224958	111.2
i) 7-up Coca Cola etc.	17		'000' Litres	229851	204915	112.2
ii) Fruit Juices	16		'000' Litres	18849	18718	100.7
iii) Syrups & Squashes	2		'000' Litres	1509	1325	113.9
8 Cigarettes	3	0.59	M. Nos	1532	883	173.5
II Textiles	312					
1 Cotton Textiles	285					
i) Cotton/M. M Blended Yarn	247	15.40	M.Tons	109406	123701	88.4
ii) Cloth/M. M Blended Cloth	48	10.20	000 Mtrs.	45445	51325	88.5
2 Woolen Textiles	21	0.52	M.Tons	777	679	114.4
i) Woolen Yarn	14		M.Tons	761	659	115.5
ii) Knitting Wool			M.Tons	0	0	
iii) Woolen & Worsted Cloth	14		M.Tons	16	20	80.0
iv) Carpets	5	0.77	000 Mtrs.	0	0	
3 Jute Textiles	6	0.28	M.Tons	3694	4835	76.4
i) Jute Sacking				2164	3212	67.4
ii) Jute Hessian				1165	1126	103.5
iii) Jute Twine				365	497	73.4
III Leather Rubber & Plastic Products	147					
1 Leather Tanning	106					
i) Upper Leather	95	0.49	000 Sq. Mtrs.	753	799	94.2
ii) Sole Leather	11		M.Tons	16	16	100.0
2 Footwear	41	0.90	000 Pairs	3166	3045	104.0
IV Ply Wood	6	0.44	000 Sq. Feet	610	592	103.0
V Paper & Paper Board	47	4.19	M.Tons	55960	47916	116.8
1 Paper				19328	18516	104.4
i) Writing			M.Tons	8425	8712	96.7
ii) Printing			M.Tons	3702	3421	108.2
iii) Packing & Others			M.Tons	7201	6383	112.8
2 Paper Board			M.Tons	36632	29400	124.6
VI Chemical & Petroleum Products	139					
1 Pharmaceuticals	36	1.15				98.0
i) Tablets	28	0.38	000 Nos.	298584	301518	99.0
ii) Liquids (Syrups & Drops)	27	0.48	000 Ltrs.	1576	1786	88.2
iii) Capsules	19	0.08	000 Nos.	55101	44381	124.2
iv) Injections	12	0.14	000 Nos.	13769	14158	97.3
v) Ointments	7	0.03	Kgs.	53226	49816	106.8
vi) Galenicals	6	0.04	000 Ltrs.	3	2	150.0
2 Basic Inorganic Chemicals/Acids	8	1.34		81717	101977	80.1
i) Caustic Soda	2		M.Tons	18639	30983	60.2
ii) Hydrochloric Acid	2		M.Tons	32643	40456	80.7
iii) Chlorine Liquids	2		M.Tons	1416	1243	113.9
iv) Soda Ash	2		M.Tons	27986	27908	100.3
v) Sulphuric Acid	5		M.Tons	1033	1387	74.5

Group/Items	No. of Units Covered in Apr: 2025	Weight with 2005-06 base	Unit of Quantity	Production		Index of Production in Apr: 2025 with Apr: 2024
				Apr: 2025	Apr: 2024	
3 Fertilizers	7	7.18	M.Tons	467898	440538	106.2
i) Urea	4		M.Tons	329967	289034	114.2
ii) Amm. Nitrate	1		M.Tons	70500	76085	92.7
iii) Amm. Sulphate	0		M.Tons	0	0	
iv) Super Phosphate	1		M.Tons	0	0	
v) Nitro Phosphate	1		M.Tons	67431	75419	89.4
4 Paints & Varnishes	12	0.65		9974	10849	91.9
i) Paints		0.01	M.Tons	7148	7202	99.3
			`000` Litres	2796	3617	77.3
ii) Varnishes		1.04	M.Tons	16	16	100.0
		0.26	`000` Litres	14	14	100.0
5 Tyres & Tubes	6	0.12	`000` Nos.	3537	3419	103.5
i) Cycle Tyres				401	368	109.0
ii) Automobile Tyres				495	481	102.9
iii) Cycle Tubes				608	574	105.9
iv) Automobile Tubes				2033	1996	101.9
6 Soap	62	0.07	M.Tons	21557	22177	97.2
i) Toilet Soap	7			3729	3926	95.0
ii) Washing Soap	62			17828	18251	97.7
7 Matches	2	0.00	M. Box * 40 Sticks	730	672	108.6
8 Synthetic Fibre	4	0.95	M.Tons	43455	42651	101.9
9 Petroleum Products	2	0.99	`000` Litres	544498	522263	104.3
i) Petrol (LPG)			`000` Litres	15196	14746	103.1
ii) J.P.			`000` Litres	43537	47228	92.2
iii) White Kerosene			`000` Litres	2650	4482	59.1
iv) H.S. Diesel			`000` Litres	175453	193316	90.8
v) Diesel Fuel			`000` Litres	210	0	
vi) Furnace Fuel			`000` Litres	93310	98650	94.6
vii) Solvent Oil			`000` Litres	0	0	
viii) Lubricating Oil			`000` Litres	0	0	
ix) Bitumen 80/100			`000` Litres	16150	9487	170.2
x) Blown Bitumen Products			`000` Litres	0	0	
xi) Premium M.G.			`000` Litres	197992	154354	128.3
xii) Naphtha			`000` Litres	0	0	
VII Non-Metalic & Mineral	20					
1 Glass Sheets	9	0.19	M.Tons	24545	24578	99.9
2 Cement	11	3.91	M.Tons	1685463	1432101	117.7
VIII Engineering Products	449					
1 Steel Bars/ Angles	41	1.06	M.Tons	24701	22685	108.9
2 Fabricated Metal Products/HMC	1	0.53	M.Tons	15	16	93.8
3 Tractors	4	0.86	Nos.	980	3910	25.1
4 Automobiles Cars/Trucks	1	1.65	Nos.	563	605	93.1
5 Diesel Engines	15	0.06	Nos.	123	122	100.8
6 Motor Cycles	17	0.13	Nos.	112733	86613	130.2
7 Bicycles	3	0.15	Nos.	14485	13740	105.4
8 Electric Fans	116	0.11	Nos.	244826	226686	108.0
i) Ceiling				162845	120419	135.2
ii) Pedestal				39997	39280	101.8
iii) Others				41984	66987	62.7
9 Electric Transformers	3	0.00	Nos.	1713	1812	94.5
10 Electric Motors	30	0.52	Nos.	1480	1390	106.5
11 Switch Gears	3	0.01	Nos.	430	900	47.8
12 Washing Machines	20	0.00	Nos.	34837	32570	107.0
13 Electric Meters	4	0.19	Nos.	146249	175682	83.2
14 Air-Conditioners	5	0.14	Nos.	8025	7544	106.4
15 Refrigerators/Deep Freezers	5	0.31	Nos.	47178	35857	131.6
16 Safety Razor Blades	1	0.14	Mill. Nos.	77	81	95.1
17 Agricultural Implements	151	0.38	Nos.	1080	1122	96.3
i) Chaff Cutter	54			675	676	99.9
ii) Sugarcane Machines	35			3	3	100.0
iii) Wheat Thrashers	30			60	42	142.9
iv) Others (Misc. Imp.)	43			342	401	85.3
18 Textiles Machinery	29	0.01		54	53	101.9
i) Power Looms	20		Nos.	50	49	102.0
ii) Bobbins	5		000 Nos.	0	0	
iii) Shuttles	6		000 Nos.	4	4	100.0
General Index	2030	72.14		164.4	161.4	101.9

Table 4: Production Volume of Selected Items Pertaining to Large-Scale Manufacturing Sector, 2024-25 (Jul-Apr) VS 2023-24 (Jul-Apr)						
Group/Items	No. of Units Covered in Apr: 2025	Weight with 2005-06 base	Unit of Quantity	Production		Index of Production in 2024-25 (Jul-Apr) with 2023-24 (Jul-Apr)=100
				2024-25 (Jul-Apr)	2023-24 (Jul-Apr)	
I Food Drinks & Tobacco	910					
1 Vegetable Ghee/Cooking Oil	44	5.00	M.Tons	1044573	1032113	101.2
i) Vegetable Ghee	44		M.Tons	833845	833966	100.0
ii) Cooking Oil	18		M.Tons	210728	198147	106.3
2 Dairy Products	8	4.13				130.2
i) Process/UHT Milk		1.62	`000` Litres	435595	406150	107.2
ii) Milk Powder		0.87	M.Tons	11770	5005	235.2
iii) Chees		0.01	M.Tons	8227	3134	262.5
iv) Butter/ Desi Ghee		0.33	M.Tons	3336	3469	96.2
v) Cream		1.04	M.Tons	7105	5907	120.3
vi) Yoghurt		0.26	M.Tons	0	0	
3 Wheat Milling	776	1.25	M.Tons	8587238	8091436	106.1
4 Sugar	44	3.77	M.Tons	4681455	5104124	91.7
5 Tea (Blended)	3	0.03	M.Tons	74863	78307	95.6
6 Starch & its Products	2	0.56	M.Tons	367157	365932	100.3
i) Starch			M.Tons	225381	225079	100.1
ii) Glucose			M.Tons	141776	140853	100.7
7 Soft Drinks & Juices	30	0.82	`000` Litres	2074432	1817010	114.2
i) 7-up Coca Cola etc.	17		`000` Litres	1887517	1636477	115.3
ii) Fruit Juices	16		`000` Litres	164370	162000	101.5
iii) Syrups & Squashes	2		`000` Litres	22545	18533	121.6
8 Cigarettes	3	0.59	M. Nos	13328	9118	146.2
II Textiles	312					
1 Cotton Textiles	285					
i) Cotton/M. M Blended Yarn	247	15.40	M.Tons	1137351	1244544	91.4
ii) Cloth/M. M Blended Cloth	48	10.20	000 Mtrs.	470470	567399	82.9
2 Woolen Textiles	21	0.52	M.Tons	7750	6772	114.4
i) Woolen Yarn	14		M.Tons	7584	6557	115.7
ii) Knitting Wool			M.Tons	0	0	
iii) Woolen & Worsted Cloth	14		M.Tons	166	215	77.2
iv) Carpets	5	0.77	000 Mtrs.	0	0	
3 Jute Textiles	6	0.28	M.Tons	37146	47248	78.6
i) Jute Sacking				22155	31537	70.3
ii) Jute Hessian				11501	11020	104.4
iii) Jute Twine				3490	4691	74.4
III Leather Rubber & Plastic Products	147					
1 Leather Tanning	106					
i) Upper Leather	95	0.49	000 Sq. Mtrs.	7741	7710	100.4
ii) Sole Leather	11		M.Tons	160	163	98.2
2 Footwear	41	0.90	000 Pairs	31578	29122	108.4
IV Ply Wood	6	0.44	000 Sq. Feet	6083	6022	101.0
V Paper & Paper Board	47	4.19	M.Tons	569568	557708	102.1
1 Paper				202508	205762	98.4
i) Writing			M.Tons	91876	90515	101.5
ii) Printing			M.Tons	49380	54384	90.8
iii) Packing & Others			M.Tons	61252	60863	100.6
2 Paper Board			M.Tons	367060	351946	104.3
VI Chemical & Petroleum Products	139					
1 Pharmaceuticals	36	1.15				99.2
i) Tablets	28	0.38	000 Nos.	3104184	2946533	105.4
ii) Liquids (Syrups & Drops)	27	0.48	000 Ltrs.	16813	18575	90.5
iii) Capsules	19	0.08	000 Nos.	549026	469704	116.9
iv) Injections	12	0.14	000 Nos.	142308	147340	96.6
v) Ointments	7	0.03	Kgs.	489141	521128	93.9
vi) Galenicals	6	0.04	000 Ltrs.	28	23	121.7
2 Basic Inorganic Chemicals/Acids	8	1.34		991734	941429	105.3
i) Caustic Soda	2		M.Tons	271755	232355	117.0
ii) Hydrochloric Acid	2		M.Tons	387520	427731	90.6
iii) Chlorine Liquids	2		M.Tons	13990	14887	94.0
iv) Soda Ash	2		M.Tons	306167	243185	125.9
v) Sulphuric Acid	5		M.Tons	12302	23271	52.9

Group/Items	No. of Units Covered in Apr: 2025	Weight with 2005-06 base	Unit of Quantity	Production		Index of Production in 2024-25 (Jul-Apr) with 2023-24 (Jul-Apr)=100
				2024-25 (Jul-Apr)	2023-24 (Jul-Apr)	
3 Fertilizers	7	7.18	M.Tons	4434018	4482540	98.9
i) Urea	4		M.Tons	3095510	3060082	101.2
ii) Amm. Nitrate	1		M.Tons	696850	744711	93.6
iii) Amm. Sulphate	0		M.Tons	0	0	
iv) Super Phosphate	1		M.Tons	42	4007	1.0
v) Nitro Phosphate	1		M.Tons	641616	677747	94.7
4 Paints & Varnishes	12	0.65		98805	105448	93.7
i) Paints		0.01	M.Tons	70781	72082	98.2
			'000' Litres	27724	33073	83.8
ii) Varnishes		1.04	M.Tons	160	160	100.0
		0.26	'000' Litres	140	133	105.3
5 Tyres & Tubes	6	0.12	'000' Nos.	34933	33236	105.1
i) Cycle Tyres				3879	3542	109.5
ii) Automobile Tyres				4909	4666	105.2
iii) Cycle Tubes				5948	5648	105.3
iv) Automobile Tubes				20197	19380	104.2
6 Soap	62	0.07	M.Tons	215852	210598	102.5
i) Toilet Soap	7			37775	35105	107.6
ii) Washing Soap	62			178077	175493	101.5
7 Matches	2	0.00	M. Box * 40 Sticks	6960	6418	108.4
8 Synthetic Fibre	4	0.95	M.Tons	437244	431452	101.3
9 Petroleum Products	2	0.99	'000' Litres	5095208	5675473	89.8
i) Petrol (LPG)			'000' Litres	145124	134746	107.7
ii) J.P.			'000' Litres	466813	441814	105.7
iii) White Kerosene			'000' Litres	48479	25411	190.8
iv) H.S. Diesel			'000' Litres	1802179	2232592	80.7
v) Diesel Fuel			'000' Litres	6463	0	
vi) Furnace Fuel			'000' Litres	857613	1069149	80.2
vii) Solvent Oil			'000' Litres	0	0	
viii) Lubricating Oil			'000' Litres	0	0	
ix) Bitumen 80/100			'000' Litres	127169	103322	123.1
x) Blown Bitumen Products			'000' Litres	0	0	
xi) Premium M.G.			'000' Litres	1641368	1668439	98.4
xii) Naphtha			'000' Litres	0	0	
VII Non-Metalic & Mineral	20					
1 Glass Sheets	9	0.19	M.Tons	247525	252116	98.2
2 Cement	11	3.91	M.Tons	16942951	17051870	99.4
VIII Engineering Products	449					
1 Steel Bars/ Angles	41	1.06	M.Tons	241357	223136	108.2
2 Fabricated Metal Products/HMC	1	0.53	M.Tons	171	143	119.6
3 Tractors	4	0.86	Nos.	13151	34524	38.1
4 Automobiles Cars/Trucks	1	1.65	Nos.	5903	5518	107.0
5 Diesel Engines	15	0.06	Nos.	1198	1296	92.4
6 Motor Cycles	17	0.13	Nos.	1055538	871339	121.1
7 Bicycles	3	0.15	Nos.	141004	131398	107.3
8 Electric Fans	116	0.11	Nos.	2017172	1782063	113.2
i) Ceiling				1337705	1024731	130.5
ii) Pedestal				259824	270745	96.0
iii) Others				419643	486587	86.2
9 Electric Transformers	3	0.00	Nos.	14317	19320	74.1
10 Electric Motors	30	0.52	Nos.	13585	13764	98.7
11 Switch Gears	3	0.01	Nos.	8172	8636	94.6
12 Washing Machines	20	0.00	Nos.	339771	313187	108.5
13 Electric Meters	4	0.19	Nos.	1326636	1813490	73.2
14 Air-Conditioners	5	0.14	Nos.	63274	58391	108.4
15 Refrigerators/Deep Freezers	5	0.31	Nos.	384887	325842	118.1
16 Safety Razor Blades	1	0.14	Mill. Nos.	875	901	97.1
17 Agricultural Implements	151	0.38	Nos.	10803	12262	88.1
i) Chaff Cutter	54			6735	6964	96.7
ii) Sugarcane Machines	35			28	26	107.7
iii) Wheat Thrashers	30			607	523	116.1
iv) Others (Misc. Imp.)	43			3433	4749	72.3
18 Textiles Machinery	29	0.01		584	553	105.6
i) Power Looms	20		Nos.	549	514	106.8
ii) Bobbins	5		000 Nos.	0	0	
iii) Shuttles	6		000 Nos.	35	39	89.7
General Index*	2030	72.14		175.7	178.5	98.5

* Average Index over ten months.

Table 5: Total Employment Regarding Large-Scale Industries, Mar-2025, April-2025 and April-2024

Groups/Items		No. of Units Covered in Apr: 2025	Mar: 2025	Apr: 2025	Apr: 2024	Index of Employment	
						Apr: 2025 with Mar: 2025	Apr: 2025 with Mar: 2024
I	Food Drinks & Tobacco	910					
1	Vegetable Ghee/Cooking Oil	44	5825	5830	5843	100.1	99.8
2	Dairy Products	8	2068	2059	2127	99.6	96.8
3	Wheat Milling	776	9810	9819	9880	100.1	99.4
4	Sugar	44	37316	27504	34112	73.7	80.6
5	Tea (Blended)	3	1654	1531	1254	92.6	122.1
6	Starch & its Products	2	1823	1823	1811	100.0	100.7
7	Soft Drinks & Juices	30	11508	11643	11514	101.2	101.1
8	Cigarettes	3	655	655	619	100.0	105.8
II	Textiles	313					
1	Cotton Textiles	285	140865	140775	144561	99.9	97.4
2	Woolen Textiles	21	938	938	925	100.0	101.4
3	Jute Textiles	7	4361	4332	4785	99.3	90.5
III	Leather Rubber & Plastic Products	147					
1	Leather Tanning	106	2330	2229	2328	95.7	95.7
2	Footwear	41	12803	12780	12795	99.8	99.9
IV	Plywood	6	80	80	86	100.0	93.0
V	Paper & Paper Board	47					
1	Paper & Paper Board	47	4896	4813	5082	98.3	94.7
VI	Chemicals & Petroleum Products	139					
1	Pharmaceuticals	36	8103	8104	8070	100.0	100.4
2	Basic Inorganic Chemicals	8	2262	2257	2240	99.8	100.8
3	Fertilizers	7	5533	5540	5510	100.1	100.5
4	Paints & Varnishes	12	2440	2454	2414	100.6	101.7
5	Tyres & Tubes	6	1420	1422	1381	100.1	103.0
6	Soap	62	3005	3007	3028	100.1	99.3
7	Matches	2	483	483	514	100.0	94.0
8	Synthetic Fibre	4	1779	1779	1762	100.0	101.0
9	Petroleum Products	2	998	998	978	100.0	102.0
VII	Non-Metalic & Mineral Products	20					
1	Glass Sheets	9	1065	1065	1078	100.0	98.8
2	Cement	11	7442	7422	7434	99.7	99.8
VIII	Engineering Products	448					
1	Steel Bars/ Angles	40	1111	1112	1092	100.1	101.8
2	Fabricated Metal Products/HMC	1	14	14	14	100.0	100.0
3	Tractors	4	444	440	465	99.1	94.6
4	Automobile Cars/Trucks	1	688	685	698	99.6	98.1
5	Diesel Engines	15	23	23	23	100.0	100.0
6	Motor Cycles	17	3263	3262	3230	100.0	101.0
7	Bicycles	3	686	686	686	100.0	100.0
8	Electric Fans	116	2290	2295	2204	100.2	104.1
9	Electric Transformers	3	2680	2680	2680	100.0	100.0
10	Electric Motors	30	164	165	160	100.6	103.1
11	Electric Meters	4	1200	1200	1200	100.0	100.0
12	Switch Gears	3	12	12	12	100.0	100.0
13	Washing Machines	20	286	285	272	99.7	104.8
15	Air-Conditioners/Refrigerators/Deep Fre	10	2153	2153	2153	100.0	100.0
16	Safety Razor Blades	1	680	675	692	99.3	97.5
17	Agricultural Implements	151	488	488	490	100.0	99.6
18	Textiles Machinery	29	70	70	68	100.0	102.9
Total		2030	287714	277587	288270	96.5	96.3

Table 6: Total Number of Production Workers Regarding Large-Scale Industries, March-2025, April-2025 and April-2024

Groups/Items		No. of Units Covered in Apr: 2025	Mar: 2025	Apr: 2025	Apr: 2024	Index of Employment	
						Apr: 2025 with Mar: 2025	Apr: 2025 with Mar: 2024
I	Food Drinks & Tobacco	910					
1	Vegetable Ghee/Cooking Oil	44	3710	3712	3660	100.1	101.4
2	Dairy Products	8	1324	1319	1391	99.6	94.8
3	Wheat Milling	776	6211	6223	6150	100.2	101.2
4	Sugar	44	25621	19845	25162	77.5	78.9
5	Tea (Blended)	3	1247	1159	965	92.9	120.1
6	Starch & its Products	2	1640	1640	1610	100.0	101.9
7	Soft Drinks & Juices	30	7879	7601	7793	96.5	97.5
8	Cigarettes	3	420	420	390	100.0	107.7
II	Textiles	313					
1	Cotton Textiles	285	116699	116587	121765	99.9	95.7
2	Woolen Textiles	21	733	733	721	100.0	101.7
3	Jute Textiles	7	4048	3915	4416	96.7	88.7
III	Leather Rubber & Plastic Products	147					
1	Leather Tanning	106	1676	1564	1653	93.3	94.6
2	Footwear	41	9352	9335	9392	99.8	99.4
IV	Plywood	6	72	72	72	100.0	100.0
V	Paper & Paper Board	47					
1	Paper & Paper Board	47	3496	3534	3659	101.1	96.6
VI	Chemicals & Petroleum Products	139					
1	Pharmaceuticals	36	3315	3316	3275	100.0	101.3
2	Basic Inorganic Chemicals	8	1402	1400	1389	99.9	100.8
3	Fertilizers	7	3489	3492	3478	100.1	100.4
4	Paints & Varnishes	12	1528	1544	1415	101.0	109.1
5	Tyres & Tubes	6	1106	1108	1068	100.2	103.7
6	Soap	62	2368	2369	2448	100.0	96.8
7	Matches	2	431	431	471	100.0	91.5
8	Synthetic Fibre	4	1470	1470	1472	100.0	99.9
9	Petroleum Products	2	555	555	541	100.0	102.6
VII	Non-Metallic & Mineral Products	20					
1	Glass Sheets	9	775	775	801	100.0	96.8
2	Cement	11	4358	4356	4265	100.0	102.1
VIII	Engineering Products	448					
1	Steel Bars/ Angles	40	803	804	784	100.1	102.6
2	Fabricated Metal Products/HMC	1	11	11	11	100.0	100.0
3	Tractors	4	310	300	332	96.8	90.4
4	Automobile Cars/Trucks	1	468	465	470	99.4	98.9
5	Diesel Engines	15	16	16	16	100.0	100.0
6	Motor Cycles	17	2420	2418	2404	99.9	100.6
7	Bicycles	3	527	527	686	100.0	76.8
8	Electric Fans	116	1832	1840	1743	100.4	105.6
9	Electric Transformers	3	1980	1980	1980	100.0	100.0
10	Electric Motors	30	134	135	133	100.7	101.5
11	Electric Meters	4	955	955	955	100.0	100.0
12	Switch Gears	3	10	10	10	100.0	100.0
13	Washing Machines	20	205	204	189	99.5	107.9
15	Air-Conditioners/Refrigerators/Deep Fre	10	1845	1845	1845	100.0	100.0
16	Safety Razor Blades	1	542	540	548	99.6	98.5
17	Agricultural Implements	151	356	356	356	100.0	100.0
18	Textiles Machinery	29	60	60	59	100.0	101.7
Total		2030	217399	210941	221943	97.0	95.0

Table 7: Average Monthly Total Employment Regarding Large-Scale Industries, 2024-25 (Jul-Apr): VS 2023-24 (Jul-Apr):

Groups/Items		No. of Units Covered in Apr: 2025	2024-25 (Jul-Apr):	2023-24 (Jul-Apr):	2024-25 (Jul-Apr) with 2023-24 (Jul-Apr):
I	Food Drinks & Tobacco	910			
1	Vegetable Ghee/Cooking Oil	44	5852	5823	100.5
2	Dairy Products	8	2069	2121	97.5
3	Wheat Milling	776	9736	9805	99.3
4	Sugar	44	30692	29194	105.1
5	Tea (Blended)	3	1620	1349	120.1
6	Starch & its Products	2	1815	1816	100.0
7	Soft Drinks & Juices	30	11466	8794	130.4
8	Cigarettes	3	646	595	108.6
II	Textiles	313			
1	Cotton Textiles	285	141463	145044	97.5
2	Woolen Textiles	21	935	913	102.5
3	Jute Textiles	7	4370	4760	91.8
III	Leather Rubber & Plastic Products	147			
1	Leather Tanning	106	2322	2313	100.4
2	Footwear	41	12806	12622	101.5
IV	Plywood	6	81	87	92.8
V	Paper & Paper Board	47			
1	Paper & Paper Board	47	4900	5135	95.4
VI	Chemicals & Petroleum Products	139			
1	Pharmaceuticals	36	8098	8058	100.5
2	Basic Inorganic Chemicals	8	2265	2224	101.8
3	Fertilizers	7	5527	5464	101.2
4	Paints & Varnishes	12	2440	2385	102.3
5	Tyres & Tubes	6	1410	1368	103.1
6	Soap	62	3013	3008	100.2
7	Matches	2	484	506	95.6
8	Synthetic Fibre	4	1781	1767	100.7
9	Petroleum Products	2	994	1004	99.1
VII	Non-Metallic & Mineral Products	20			
1	Glass Sheets	9	1076	1106	97.3
2	Cement	11	7459	7337	101.7
VIII	Engineering Products	448			
1	Steel Bars/ Angles	40	1110	1084	102.4
2	Fabricated Metal Products/HMC	1	14	15	90.9
3	Tractors	4	443	459	96.4
4	Automobile Cars/Trucks	1	690	694	99.5
5	Diesel Engines	15	23	24	97.0
6	Motor Cycles	17	3253	3210	101.3
7	Bicycles	3	686	686	100.0
8	Electric Fans	116	2237	2142	104.4
9	Electric Transformers	3	2680	2680	100.0
10	Electric Motors	30	162	162	100.4
11	Electric Meters	4	1200	1200	100.0
12	Switch Gears	3	12	12	100.0
13	Washing Machines	20	280	267	105.0
15	Air-Conditioners/Refrigerators/Deep Freezers	10	2153	2153	100.0
16	Safety Razor Blades	1	690	692	99.7
17	Agricultural Implements	151	485	508	95.5
18	Textiles Machinery	29	70	70	101.0
Total		2030	281508	280651	100.3

Table 8: Average Monthly Number of Production Workers Regarding Large-Scale Industries, 2024-25 (Jul-April): VS 2023-24 (Jul-April):

Groups/Items		No. of Units Covered in Apr: 2025	2024-25 (Jul-Apr):	2023-24 (Jul-Apr):	2024-25 (Jul-Apr) with 2023-24 (Jul-Apr):
I	Food Drinks & Tobacco	910			
1	Vegetable Ghee/Cooking Oil	44	7072	3692	191.6
2	Dairy Products	8	1315	1385	95.0
3	Wheat Milling	776	6079	6039	100.7
4	Sugar	44	21558	21441	100.5
5	Tea (Blended)	3	1215	1013	119.9
6	Starch & its Products	2	1620	1629	99.4
7	Soft Drinks & Juices	30	7712	4965	155.3
8	Cigarettes	3	411	352	116.8
II	Textiles	313			
1	Cotton Textiles	285	117553	122155	96.2
2	Woolen Textiles	21	730	714	102.3
3	Jute Textiles	7	4033	4386	91.9
III	Leather Rubber & Plastic Products	147			
1	Leather Tanning	106	1670	1637	102.0
2	Footwear	41	9353	9364	99.9
IV	Plywood	6	74	73	102.1
V	Paper & Paper Board	47			
1	Paper & Paper Board	47	3513	3702	94.9
VI	Chemicals & Petroleum Products	139			
1	Pharmaceuticals	36	3315	3292	100.7
2	Basic Inorganic Chemicals	8	1403	1378	101.8
3	Fertilizers	7	3483	3433	101.5
4	Paints & Varnishes	12	1530	1391	110.0
5	Tyres & Tubes	6	1091	1058	103.1
6	Soap	62	2379	2421	98.3
7	Matches	2	434	465	93.4
8	Synthetic Fibre	4	1480	1472	100.6
9	Petroleum Products	2	549	567	96.9
VII	Non-Metallic & Mineral Products	20			
1	Glass Sheets	9	796	820	97.1
2	Cement	11	4348	4351	99.9
VIII	Engineering Products	448			
1	Steel Bars/ Angles	40	803	781	102.8
2	Fabricated Metal Products/HMC	1	11	11	100.0
3	Tractors	4	307	327	93.9
4	Automobile Cars/Trucks	1	470	464	101.2
5	Diesel Engines	15	16	16	100.0
6	Motor Cycles	17	2413	2403	100.4
7	Bicycles	3	527	575	91.7
8	Electric Fans	116	1794	1719	104.4
9	Electric Transformers	3	1980	1980	100.0
10	Electric Motors	30	133	135	98.7
11	Electric Meters	4	955	955	100.0
12	Switch Gears	3	10	10	100.0
13	Washing Machines	20	200	189	105.5
15	Air-Conditioners/Refrigerators/Deep Freezers	10	1845	1845	100.0
16	Safety Razor Blades	1	547	548	99.8
17	Agricultural Implements	151	351	356	98.6
18	Textiles Machinery	29	60	60	100.8
Total		2030	217138	215567	100.7

PERFORMANCE OF COTTON TEXTILE INDUSTRY

Report for the month of April 2025

Coverage

This report covers Two Hundred & Eighty Five (285) Cotton Textiles Mills, Producing yarn and cloth.

Spindles/Rotors/Looms	Installed	Average Worked	% Utilization
Spindles	828175	628214	75.9%
Rotors	52613	35516	67.5%
Looms	7925	5912	74.6%

MANUFACTURING ACTIVITY (APRIL 2025)

Production, Consumption and Stock of Cotton Bales

Textile mills purchased 727776 Bales of Cotton during the month, which is 0.4% higher March 2025. These mills consumed 660909 of Cotton Bales to manufacture Yarn that is 3.7% lower than the last month. The stock of Cotton Bales at the end of the month was 5268385 Bales.

Production, Consumption and Sale of Cotton Yarn

The production of Cotton Yarn during the month was 73894 thousand kgs. Which is 0.1% lower than the last month. The mills consumed 8447 thousand kgs. Of Cotton Yarn to manufacture Cotton Cloth, during the month 71381 thousand kgs. Of Cotton Yarn was sold by the textile mills which was 0.7% higher than the March 2025. The Export of Cotton Yarn during the month was 10194 thousand kgs. Which was 5.1% higher than the last month.

Production and Sale of Cotton Cloth

The production of Cotton Cloth during the month was 39645 thousand Metres. Which is 0.2% lower than the last month, 42429 thousand Metres. Of Cotton Cloth was sold 10541 thousand Metres was exported by the Textile Mills during the month which was 1.7% lower than the last month.

Production of Man Made/Blended Yarn and Made/Blended Cloth

The production of Man Made/Blended Yarn was 35512 thousand kgs. which is 0.3% lower than the last month. The production of Man Made/Blended Cloth was 5800 thousand Mtrs. which was 0.2% lower the last month.

Employment and Wages/Salaries

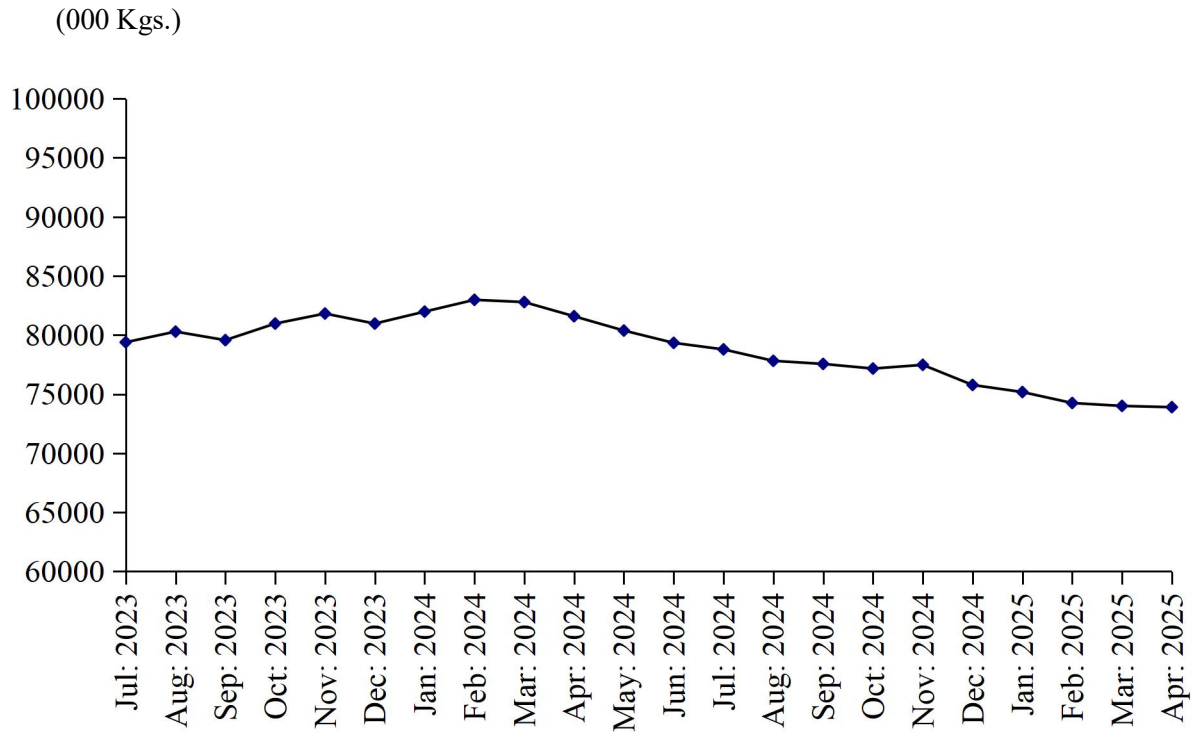
Total employment during the month was 140775 Out of this total employment, 116587 were production workers. Total wages/salaries for the month amounted to 3325.3 Million Rupees.

Production of Man Made/Blended Yarn and Cloth (Since July 2024)

Month/Year	Man Made / Blended Yarn (000 Kgs.)		Man Made / Blended Cloth (000.Mtrs.)	
	2023-24	2024-25	2023-24	2024-25
<u>Jul:- Apr:</u>	<u>432236</u>	<u>374518</u>	<u>65719</u>	<u>62667</u>
July	42910	39567	6851	6383
August	43270	38648	4940	6261
September	42685	38746	6876	7027
October	43399	38350	6888	6855
November	42399	37943	6800	6789
December	43409	37502	6789	5900
January	43594	36497	6700	5890
February	43310	35745	6789	5950
March	42521	35610	6500	5812
April	44739	35512	6586	5800
May	41546		6499	
June	39847		6412	

PRODUCTION OF COTTON YARN

July 2023 to April 2025



PRODUCTION OF COTTON CLOTH

July 2023 to April 2025

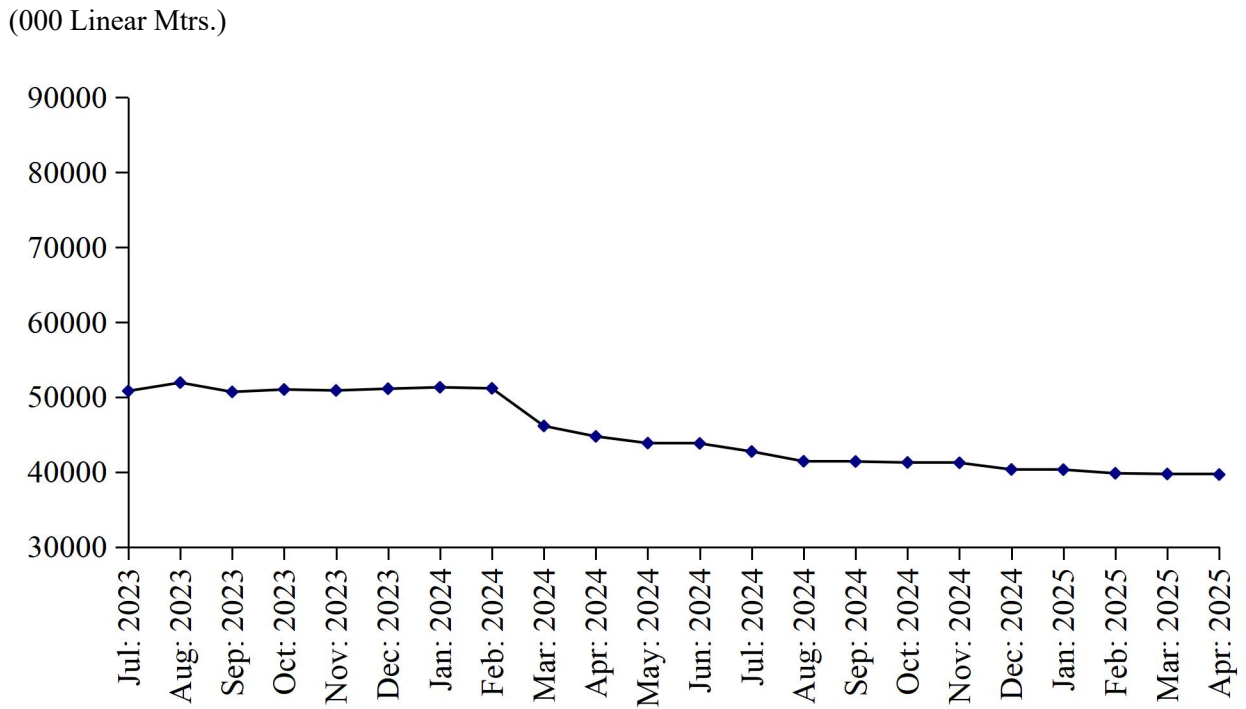


TABLE 10: DETAIL OF THE PURCHASE, SALE, CONSUMPTION AND STOCK OF COTTON BALES.

(one Bale = 170 Kg)

Year (July-June)/ Month	No. Of Reporting Mills	Purchase	Sale	Consumed for Spinning	Stock at the end of Year/Month
2008-09	268	7284896	483579	7100353	1679079
2009-10	268	8143340	505951	7889680	1426788
2010-11	274	8801855	484794	8596317	1147532
2011-12	274	8025974	387146	7286551	1499809
2012-13	277	8618084	326690	7863746	1927457
2013-14	277	8301002	434565	7838753	1955141
2014-15	277	8281619	550118	7819131	1867511
2015-16	290	7263140	330272	7085902	1714477
2016-17	290	8271104	587127	7802375	1596079
2017-18	299	8157127	412752	7459759	1880695
2018-19	299	8156763	448409	7552656	2036393
2019-20	299	6953009	399666	6319497	2270239
2020-21	285	8478928	314792	7320669	3113706
2021-22	285	11846884	1594595	9431481	3934514
2022-23	285	11142140	247639	10794841	4034174
2023-24	285	10508376	98183	9531211	4913156
(Jul: - Apr:)	<u>285</u>	<u>9165526</u>	<u>68450</u>	<u>8233169</u>	<u>4898081</u>
Jul:	285	891087	8169	875325	4041767
Aug:	285	992290	6570	869758	4157729
Sep:	285	992300	6590	870629	4272810
Oct:	285	988300	6531	879843	4374736
Nov:	285	995428	6653	979810	4383701
Dec:	285	974759	6904	858581	4492975
Jan:	285	946869	5721	848014	4586109
Feb:	285	855831	6904	738082	4696954
Mar:	285	786831	7104	682268	4794413
Apr:	285	741831	7304	630859	4898081
May:	285	635831	7404	597367	4929141
June:	285	707019	22329	700675	4913156
<u>2024-25</u>					
(Jul: – Apr:)	<u>285</u>	<u>7339213</u>	<u>191910</u>	<u>6792074</u>	<u>5268385</u>
Jul:	285	624151	18533	683820	4834954
Aug:	285	841212	56468	645999	4973699
Sep:	285	820817	20577	671896	5102043
Oct:	285	721942	19496	692077	5112412
Nov:	285	724543	14494	692863	5129598
Dec:	285	712145	14204	683461	5144078
Jan:	285	724543	12907	686124	5169590
Feb:	285	717541	12409	688530	5186192
Mar:	285	724543	11107	686395	5213233
Apr:	285	727776	11715	660909	5268385

TABLE 11: PRODUCTION, PURCHASE, CONSUMPTION, SALE AND STOCK OF COTTON YARN

(000 Kgs)

Year (July-June)/ Month	No. of Reporting Mills	Production	Purchase	Consumed	SALE			Stock at the end of Year/ Month
					Total	Within Country	Exported	
2008-09	263	744478	138920	150092	736453	562275	174178	46822
2009-10	263	824100	93550	108458	809044	646616	162428	46970
2010-11	263	861278	86884	107441	843590	672067	171523	44101
2011-12	263	807305	83157	76949	824281	661528	162753	33333
2012-13	274	892200	116081	106323	898240	651670	246570	37051
2013-14	274	939965	129796	132378	931890	720629	211561	42544
2014-15	289	982172	132904	139454	974797	750512	224285	43369
2015-16	292	987258	139201	162386	962945	753246	209699	44497
2016-17	290	1063645	143722	153715	1056034	857310	198724	42115
2017-18	247	1082179	191064	179554	1090682	857987	232695	45122
2018-19	247	1075008	186447	178128	1082390	888248	194132	46059
2019-20	247	976627	221511	180109	997528	812952	184576	66560
2020-21	247	998181	342664	169862	1182999	991173	191826	54544
2021-22	247	1006783	252995	215857	1033312	843488	189824	65153
2022-23	247	996268	204535	194104	966807	819302	147505	105045
2023-24	247	972018	197405	143963	977666	839259	138407	152839
(Jul: - Apr:)	247	812308	166821	122864	796633	680068	116565	164677
Jul:	247	79388	16900	12613	74175	63375	10800	114545
Aug:	247	80286	17128	12820	75414	64584	10830	123725
Sep:	247	79566	17126	12671	82881	70238	12643	124865
Oct:	247	80965	17026	12804	82132	70370	11762	127920
Nov:	247	81814	17111	12711	86256	72415	13841	127878
Dec:	247	80965	17026	12309	78792	67188	11604	134768
Jan:	247	81977	16426	12009	78550	67046	11504	142612
Feb:	247	82975	15826	11909	81653	69104	12549	147851
Mar:	247	82786	16226	11609	79500	68934	10566	155754
Apr:	247	81586	16026	11409	77280	66814	10466	164677
May	247	80375	16226	10609	76853	66303	10550	173816
Jun:	247	79335	14358	10490	104180	92888	11292	152839
2024-25								
(Jul:- Apr:)	247	761815	142665	99216	776526	652484	124042	181577
Jul:	247	78723	14475	11303	89899	71986	17913	144835
Aug:	247	77815	15287	14884	88624	71195	17429	134429
Sep:	247	77554	15640	10942	78344	66627	11717	138337
Oct:	247	77160	14540	9942	76767	65194	11573	143328
Nov:	247	77474	13640	8942	75425	65152	10273	150075
Dec:	247	75774	13341	8743	75774	63452	12322	154673
Jan:	247	75174	14032	8742	74949	62821	12128	160188
Feb:	247	74247	13640	8729	74491	63695	10796	164855
Mar:	247	74000	13440	8542	70872	61175	9697	172881
Apr:	247	73894	14630	8447	71381	61187	10194	181577

TABLE 12: PRODUCTION, PURCHASE, SALE AND STOCK OF COTTON CLOTH.

(000 Mtrs.)

Year (July-June)/ Month	No. Of Reporting Mills	Production	Purchased	SALE			Stock at the end of Year/ Month
				Total	Within Country	Exported	
2008-09	52	350406	52966	397698	207800	189898	75588
2009-10	52	369035	62330	438802	258870	179932	68151
2010-11	53	377058	27814	411759	273413	138346	61264
2011-12	53	324906	26410	354262	245679	108583	58318
2012-13	56	337955	39613	384441	227950	156491	51445
2013-14	56	414827	44459	454427	230989	223438	56304
2014-15	57	468206	33332	500905	297034	203871	56937
2015-16	57	522412	18246	542268	325894	216374	55327
2016-17	58	670884	42791	703647	431374	272273	65355
2017-18	39	703513	44908	749157	439486	309671	64619
2018-19	39	697096	38577	751178	456319	294859	49114
2019-20	39	650317	30785	658561	455655	202906	75042
2020-21	38	644439	48331	702494	513618	188876	65318
2021-22	38	690956	48439	728202	512555	215647	76511
2022-23	38	653813	166284	804749	633760	170989	91859
2023-24	38	587324	197410	769650	600104	169546	106943
(Jul: – Apr:)	<u>38</u>	<u>499680</u>	<u>169647</u>	<u>653637</u>	<u>516647</u>	<u>136990</u>	<u>107549</u>
Jul:	38	50804	18204	68539	55592	12947	92328
Aug:	38	51916	18404	69671	56704	12967	92977
Sep:	38	50678	18204	67929	54982	12947	93930
Oct:	38	50999	18104	69167	55220	13947	93866
Nov:	38	50871	18211	69278	55017	14261	93670
Dec:	38	51100	18104	69004	55057	13947	93870
Jan:	38	51292	17304	68622	53675	14947	93844
Feb:	38	51151	18304	65481	52034	13447	97818
Mar:	38	46130	12904	54481	41127	13354	102371
Apr:	38	44739	11904	51465	37239	14226	107549
May:	38	43841	12904	50171	36127	14044	114123
Jun:	38	43803	14859	65842	47330	18512	106943
<u>2024-25</u>							
(Jul: – Apr:)	<u>38</u>	<u>407803</u>	<u>122064</u>	<u>464901</u>	<u>347680</u>	<u>117221</u>	<u>171909</u>
Jul:	38	42724	13228	57454	41853	15601	105441
Aug:	38	41415	17353	53079	40048	13031	111130
Sep:	38	41385	13261	50410	38282	12128	115366
Oct:	38	41256	11261	44281	33250	11031	123602
Nov:	38	41214	11059	44214	32509	11705	131661
Dec:	38	40324	10949	43242	32411	10831	139692
Jan:	38	40300	11059	43342	32509	10833	147709
Feb:	38	39815	10959	43810	33010	10800	154673
Mar:	38	39725	11059	42640	31920	10720	162817
Apr:	38	39645	11876	42429	31888	10541	171909

TABLE 13: EMPLOYMENT AND WAGES/SALARIES

Year (July-June)/ Month	No. Of Reporting Mills	E M P L O Y M E N T (Nos.)*			WAGES/SALARIES (000 Rs.)		
		Total	Production Workers	Office Staff	Total	Production Workers	Office Staff
2008-09	288	162984	139152	23832	802438	629608	172830
2009-10	288	168727	144487	24240	944137	750701	193436
2010-11	295	166718	142756	23962	1149580	893633	255947
2011-12	295	163535	140315	23220	1171743	926744	245002
2012-13	280	169697	144411	25286	1323153	1043134	280586
2013-14	281	172129	144216	27913	1627528	1286234	341294
2014-15	289	170528	143048	27480	1734882	1372957	361925
2015-16	289	164049	135777	28272	1925533	1497525	423209
2016-17	298	165251	133259	31992	2069106	1599857	469249
2017-18	299	161727	133190	28537	2251084	1756455	494629
2018-19	299	157846	131085	26761	2438412	1891246	247166
2019-20	299	151851	126203	25648	2499773	1973563	526210
2020-21	285	154706	129886	24820	2816361	2213454	602907
2021-22	285	157343	132207	25136	3146792	2425150	721642
2022-23	285	150922	126438	24484	3307707	2550426	757281
2023-24	285	144754	121749	23005	3334736	2596046	738690
(Jul: - Apr:)	285	144983	121877	23106	3334563	2595709	738854
Jul:	285	143780	120886	22894	3332210	2589146	743064
Aug:	285	144155	121036	23119	3334120	2590137	743983
Sep:	285	145255	122036	23219	3336181	2598182	737999
Oct:	285	145557	122238	23319	3336063	2598282	737781
Nov:	285	145571	122731	22840	3336611	2598372	738239
Dec:	285	145557	122238	23319	3336063	2598282	737781
Jan:	285	145657	122435	23222	3337164	2599183	737981
Feb:	285	145557	122238	23319	3336063	2598282	737781
Mar:	285	144443	121432	23011	3331136	2593921	737215
Apr:	285	144300	121504	22796	3330021	2593307	736714
May	285	143612	121585	22027	3336063	2598282	737781
Jun	285	143598	120631	22967	3335141	2597174	737970
2024-25							
(Jul: - Apr:)	285	141463	117553	23910	3329201	2596283	732918
Jul:	285	142970	120031	22939	3331120	2599045	732075
Aug:	285	141766	117942	23629	3331120	2599120	732000
Sep:	285	141760	117900	23860	3332181	2600031	732150
Oct:	285	141611	117810	23801	3331000	2598100	732900
Nov:	285	141575	117413	24162	3331001	2598000	733001
Dec:	285	141341	117241	24100	3330010	2597009	733001
Jan:	285	141022	117115	23907	3327651	2599175	728476
Feb:	285	140945	116789	24156	3326405	2599010	727395
Mar:	285	140865	116699	24166	3326201	2587124	739077
Apr:	285	140775	116587	24188	3325321	2586214	739107

* = Monthly averages over the ten month.

ANNEXURE-II

PERFORMANCE OF WOOLLEN TEXTILE INDUSTRY

Report for the month of April 2025

Coverage

The report covers the following Twenty one (21) Woollen Textile Mills of Punjab Province. Their installed and working capacities during the month are as under:-

Production

The Woollen Textile Mills produced 761 thousand Kgs. of Woollen Yarn, and Nil production of Knitting Wool during the month April 2025. The production of Woollen Yarn which was 2.4% lower than the last month.

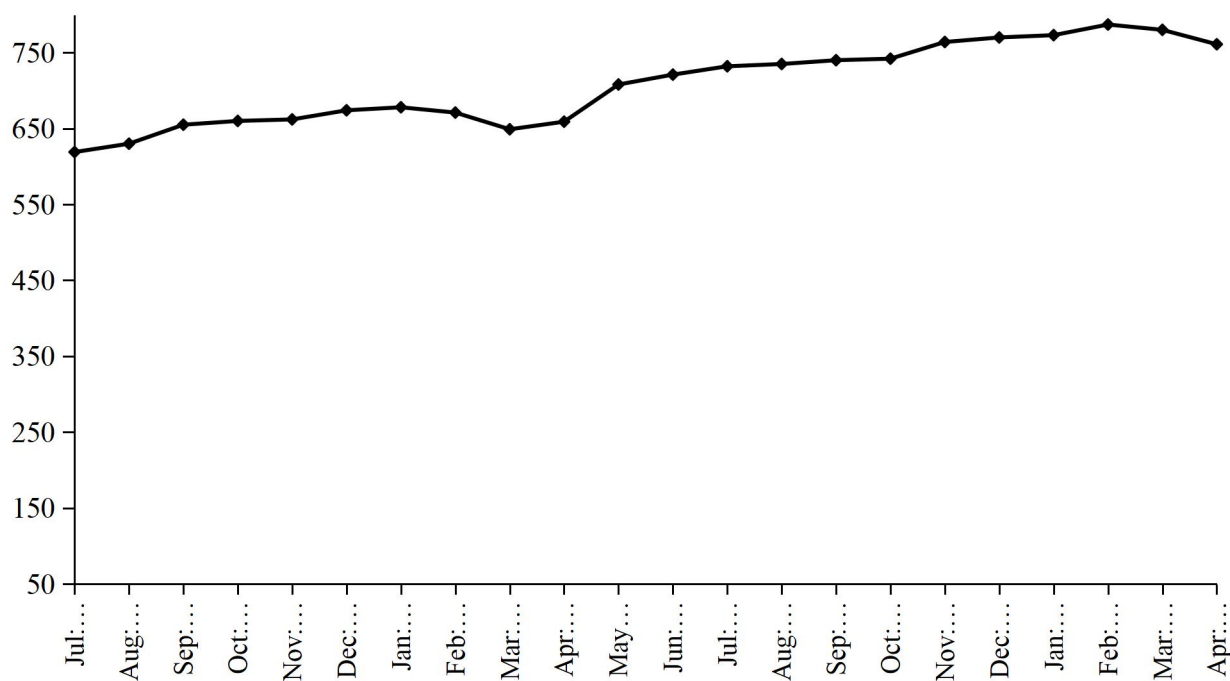
Employment

Total employment in the mills under report was 938 which was same as the last month. Out of this total employment 733 were production worker.

PRODUCTION OF KNITTING WOOL

July 2023 to April 2025

(000 Kg.)



PRODUCTION OF WOOLEN YARN

July 2023 to April 2025

(000 Kg.)

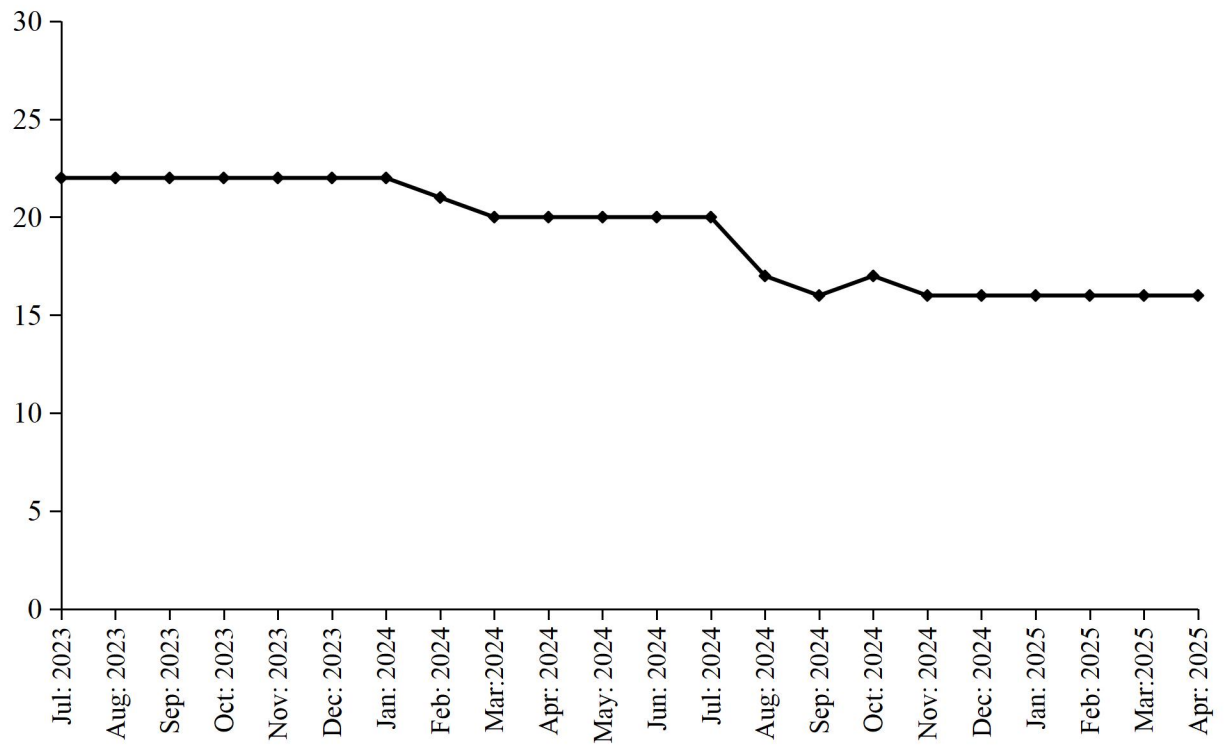


TABLE 13: MANUFACTURING ACTIVITY OF WOOLLEN INDUSTRY.

Year (July-June)/ month	No. Of Reporting Units	PRODUCTION				EMPLOYMENT (Nos.) *	
		Woollen Yarn (M.Tons)	Knitting Wool (M.Tons)	Woollen Worsted Cloth (000 Mtrs.)	Blankets (Nos.)	Total	Production Workers
2008-09	27	1046	2778	991	-	1787	1476
2009-10	27	1154	2565	825	-	1797	1491
2010-11	27	1037	2351	844	-	1729	1478
2011-12	27	826	2097	808	-	1680	1405
2012-13	27	740	2250	592	-	1661	1413
2013-14	27	864	1633	221	-	1410	1153
2014-15	27	1510	1805	243	-	1301	1037
2015-16	27	1334	1963	246	-	1252	998
2016-17	27	1738	1898	226	-	1318	1056
2017-18	26	2159	1673	160	-	1397	1116
2018-19	26	1918	1488	11	-	1372	1096
2019-20	25	2731	883	79	-	1318	1055
2020-21	21	7988	428	172	-	1303	1017
2021-22	21	7068	27	223	-	1096	832
2022-23	21	7484	-	214	-	918	721
2023-24	21	7986	-	255	-	915	715
(Jul: – Apr:)	21	5898	=	195	=	911	713
Jul:	21	619	-	22	-	904	706
Aug:	21	630	-	22	-	904	706
Sep:	21	655	-	22	-	902	704
Oct:	21	660	-	22	-	912	714
Nov:	21	662	-	22	-	912	714
Dec:	21	674	-	22	-	915	718
Jan:	21	678	-	22	-	912	718
Feb:	21	671	-	21	-	918	718
Mar:	21	649	-	20	-	918	718
Apr:	21	659	-	20	-	925	721
May	21	708	-	20	-	925	721
Jun:	21	721	-	20	-	928	724
2024 -25							
(Jul: – Apr:)	21	6823	=	150	=	935	730
Jul:	21	732	-	20	-	933	728
Aug:	21	735	-	17	-	933	726
Sep:	21	740	-	16	-	930	725
Oct:	21	742	-	17	-	932	728
Nov:	21	764	-	16	-	935	730
Dec:	21	770	-	16	-	938	733
Jan:	21	773	-	16	-	938	733
Feb:	21	787	-	16	-	938	733
Mar:	21	780	-	16	-	938	733
Apr:	21	761	-	16	-	938	733

* = Monthly Average over the ten month..

PERFORMANCE OF VEGETABLE GHEE/COOKING OIL INDUSTRY

Report for the month of April 2025

Coverage

This report covers Fifty (50) Vegetable Ghee/Cooking Oil Mills of the Punjab Province.

Purchase, Consumption and Stock of Edible Oil

During the month of April 2025, about 39266 metric tons Local Oil and 27903 metric tons Imported Palm Oil was purchased by the Mills, meanwhile, about 19399 metric tons Other Oil was produced as compared to 19499 metric tons produced in the last month. The Oil intake for production of Vegetable Ghee/Cooking Oil during the month was recorded at 42014 metric tons witnessed 0.1% increase as compared to the last month. The stock of Oil at the end of the month was closed at 86343 metric tons.

Production, Sale and Stock of Vegetable Ghee/Cooking Oil

Vegetable Ghee and Cooking Oil production in the province during the month registered 0.1% percent increase as compared to last month. The data revealed about 84650 metric tons & 21120 metric tons production of Vegetable Ghee and Cooking Oil during the month respectively. The sale of Vegetable Ghee/Cooking Oil during the month was 104140 metric tons witnessed 0.1% percent increase as compared to the last month. The stock of Vegetable Ghee/Cooking Oil closed at the end of the month at 26837 metric tons.

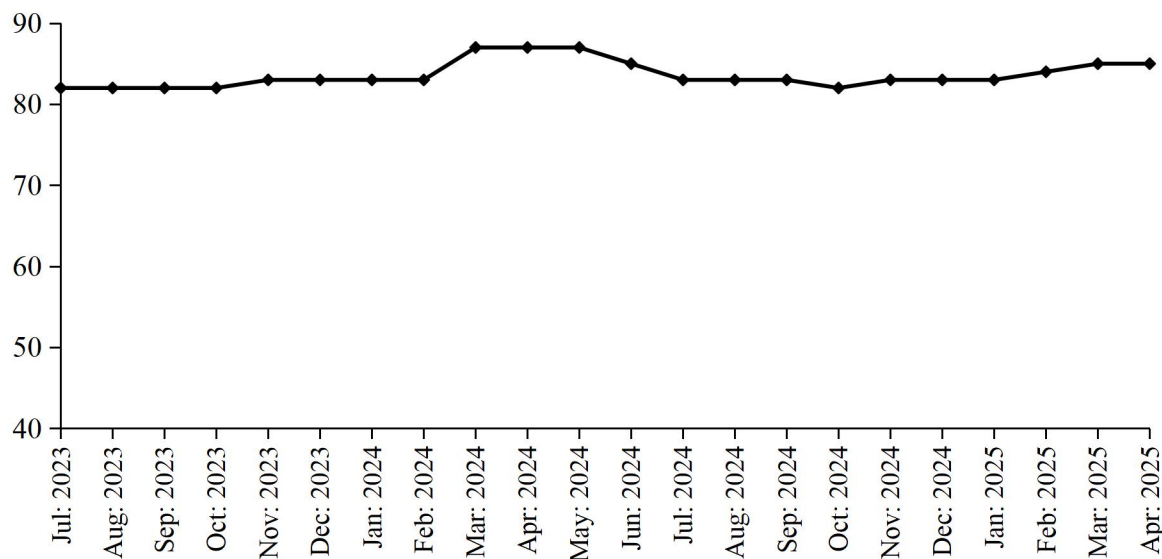
Employment and Wages/Salaries

Total employment recorded in the Mills of Vegetable Ghee/Cooking Oil during the month was 5830, which is 0.1% higher than the last month. Production workers was 3712 amount of Rs.130 million was paid by the Mills against total wages/salaries for the month of April 2025.

PRODUCTION OF VEGETABLE GHEE

July 2023 to April 2025

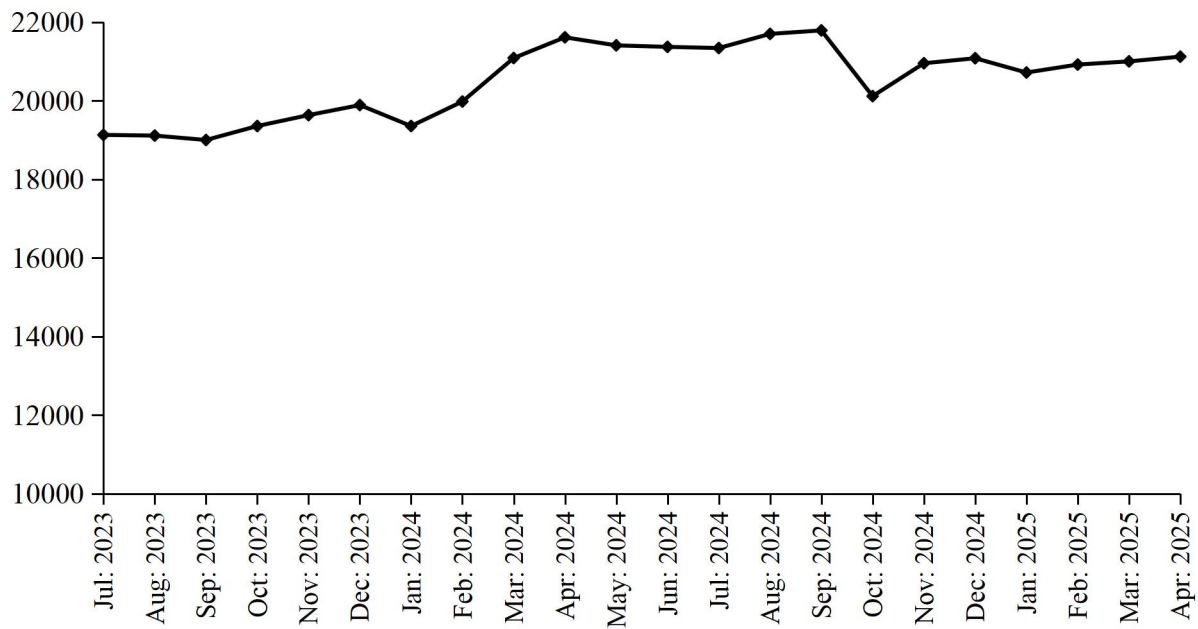
(000 M.Tons)



PRODUCTION OF COOKING OIL

July 2023 to April 2025

(000 M.Tons)



PRODUCTION OF VEGETABLE GHEE/COOKING OIL

July 2023 to April 2025

(000 M.Tons)

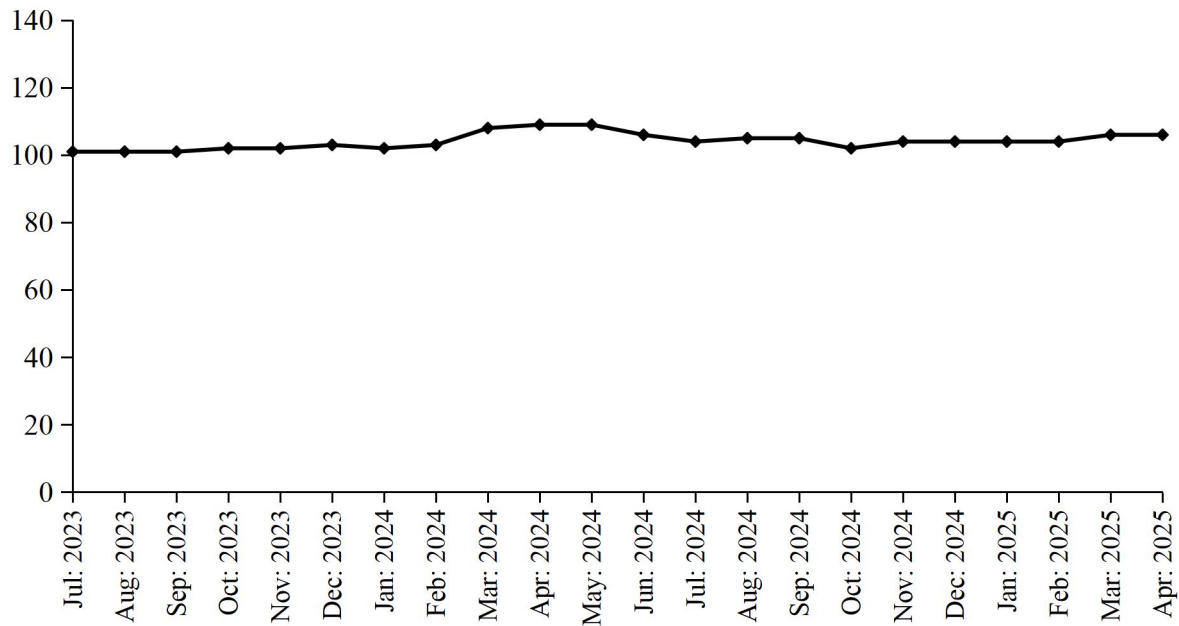


TABLE 15:DETAIL OF THE STOCK, PURCHASED, CONSUMED AND SALE OF EDIBLE OIL.

(M. Tons)

Year (July-June)/ Month	No. Of Repor- ting Mills	LOCALLY PURCHASED		PRODUCED		Impor- ted	Consumed / Sent for Refinery	Sold/ Trans- ferred	Stock at the end of Year/ Month
		Cotton Seed Oil	Other Oil	Cotton Seed Oil	Other Oil				
2008-09	54	-	100857	-	5206	398310	487250	-	32157
2009-10	54	-	104202	-	25852	512468	615680	25090	33909
2010-11	54	327	183884	-	35675	482008	634601	77461	23741
2011-12	54	-	183112	-	34577	423778	607993	37657	19558
2012-13	54	-	229765	-	43652	431163	660016	33454	30668
2013-14	54	-	216660	-	38972	495070	696775	42965	41630
2014-15	53	-	162624	-	49151	585062	753658	50338	34471
2015-16	53	-	185823	-	44073	885878	885882	18622	40602
2016-17	50	-	220571	-	60257	633199	881071	39566	33992
2017-18	51	-	206532	-	83627	849072	1074228	60975	38020
2018-19	51	-	213910	-	92005	836051	1055742	77884	46360
2019-20	52	-	248945	-	60421	715798	921638	102073	47813
2020-21	50	-	374560	-	84020	578628	837241	176122	65658
2021-22	44	-	363623	-	137479	560354	710634	330409	86071
2022-23	44	-	442323	-	147675	441595	481286	554926	81452
2023-24	44	-	463531	-	197118	363355	551880	468955	84621
(Jul: - Apr:)	<u>44</u>	=	<u>386661</u>	=	<u>161744</u>	<u>306852</u>	<u>450650</u>	<u>386190</u>	<u>99869</u>
Jul:	44	-	39239	-	16513	32370	45496	41549	82529
Aug:	44	-	39136	-	15701	32258	45081	40067	84476
Sep:	44	-	39239	-	16013	32740	45096	40898	86474
Oct:	44	-	39134	-	16045	30119	45449	38171	88152
Nov:	44	-	39035	-	15945	31130	45249	38070	90943
Dec:	44	-	38538	-	16047	30130	44849	37073	93736
Jan:	44	-	37035	-	16945	28115	44283	38070	93478
Feb:	44	-	38035	-	17045	29930	44749	38095	95644
Mar:	44	-	39035	-	15945	30130	45249	37092	98413
Apr:	44	-	38235	-	15545	29930	45149	37105	99869
May:	44	-	39035	-	17868	28504	54614	40665	89997
June	44	-	37835	-	17506	27999	46616	42100	84621
<u>2023-24</u>									
(Jul:- Apr:)	<u>44</u>	=	<u>382442</u>	=	<u>183441</u>	<u>261986</u>	<u>427339</u>	<u>398808</u>	<u>86343</u>
Jul:	44	-	37435	-	17206	27399	46653	40454	79554
Aug:	44	-	38225	-	18311	25763	43517	39458	78878
Sep:	44	-	38215	-	17811	25263	41117	39448	79602
Oct:	44	-	38225	-	18311	25553	41610	40448	79633
Nov:	44	-	38195	-	18271	25563	44086	37458	80118
Dec:	44	-	37725	-	18211	25463	41677	39342	80498
Jan:	44	-	37623	-	18111	25363	41518	39139	80938
Feb:	44	-	38225	-	18311	25763	41677	39233	82327
Mar:	44	-	39308	-	19499	27953	42718	41814	84555
Apr:	44	-	39266	-	19399	27903	42766	42014	86343

TABLE 16:DETAIL OFPRODUCTION, SALE AND STOCK OF VEGETABLE GHEE/COOKING OIL

(M.Tons)

Year (July-June)/ Month	No. Of Repor- ting Mills	P R O D U C T I O N			Sale	Stock At the end
		Vegetable Ghee	Cooking Oil	Total		
2008-09	54	427976	60147	488123	486544	8119
2009-10	54	519765	87487	607252	606825	8546
2010-11	54	524809	96711	621520	622978	7088
2011-12	54	507688	93151	600839	600269	7658
2012-13	54	537111	119437	656548	654031	9059
2013-14	54	533628	20248	159078	156829	10897
2014-15	53	576943	102881	679824	679487	8985
2015-16	53	641889	113708	755597	755526	9057
2016-17	50	644550	110166	754716	755306	8170
2017-18	51	786226	127257	913483	912553	9100
2018-19	51	804497	152352	956849	944020	18074
2019-20	50	880796	193901	1074697	1076905	15866
2020-21	50	860505	198332	1058837	1063974	10729
2021-22	44	859227	193809	1053036	1051023	12742
2022-23	44	950409	217618	1168027	1168721	12048
2023-24	44	1006093	240923	1247016	1247368	11696
(Jul: - Apr:)	44	833966	198174	1032113	1030824	13337
Jul:	44	82249	19129	101378	100981	12445
Aug:	44	82106	19112	101218	100824	12839
Sep:	44	82038	19000	101038	100621	13256
Oct:	44	81878	19355	101233	102262	12227
Nov:	44	82787	19633	102420	101471	13176
Dec:	44	82983	19888	102871	102825	13222
Jan:	44	82787	19355	102142	103157	12207
Feb:	44	83154	19978	103132	102760	12579
Mar:	44	86529	21085	107614	106843	13350
Apr:	44	87455	21612	109067	109080	13337
May:	44	87234	21407	108641	110132	11846
June	44	84893	21369	106262	106412	11696
<u>2024-25</u>						
(Jul: - Apr:)	44	833845	210728	1044573	1031432	24837
Jul:	44	83018	21339	104357	104306	11747
Aug:	44	83412	21699	105111	105359	11499
Sep:	44	83491	21788	105279	105193	11585
Oct:	44	82165	20115	102280	100331	13534
Nov:	44	82828	20952	103780	98533	18781
Dec:	44	83252	21080	104332	103353	19760
Jan:	44	82969	20716	103685	103323	20122
Feb:	44	83515	20919	104434	102874	21682
Mar:	44	84545	21000	105545	104020	23207
Apr:	44	84650	21120	105770	104140	24837

TABLE 17:EMPLOYMENT AND WAGES/SALARIES.

Year (July-June)/ Month	No. Of Reporting Mills	E M P L O Y M E N T (NOS)*			WAGES/SALARIES (000 Rs.)	
		Total	Production Workers	Office Staff	Total	Production Workers
2008-09	54	3406	2109	1297	23522	12589
2009-10	54	3449	2176	1273	30532	17526
2010-11	54	3675	2366	1309	34883	20727
2011-12	54	3703	2558	1145	35708	20873
2012-13	54	3798	2625	1173	40008	23277
2013-14	54	4072	2753	1319	50720	28667
2014-15	53	4009	2756	1253	55717	31302
2015-16	53	4122	2901	1221	64521	38408
2016-17	50	3933	2678	1255	62720	35328
2017-18	51	4105	2737	1368	65889	38083
2018-19	52	4111	2787	1324	69521	39564
2019-20	50	5001	3286	1715	77791	41351
2020-21	50	5111	3250	1861	91913	42105
2021-22	44	5295	3287	2008	99277	48422
2022-23	44	5649	3464	2185	122345	59546
2023-24	44	5904	3744	2160	130030	61366
(Jul: - Apr:)	<u>44</u>	<u>5907</u>	<u>3753</u>	<u>2154</u>	<u>130315</u>	<u>61582</u>
Jul:	44	5798	3681	2117	129493	60673
Aug:	44	5798	3681	2117	129493	60673
Sep:	44	5798	3681	2117	129493	60673
Oct:	44	5795	3680	2115	129512	60751
Nov:	44	5810	3690	2120	129611	60840
Dec:	44	6000	3786	2214	130512	60901
Jan:	44	5848	3761	2087	129512	60751
Feb:	44	6000	3786	2214	130615	62753
Mar:	44	6101	3886	2215	132400	63751
Apr:	44	6120	3896	2224	132512	64051
May:	44	5945	3718	2227	128594	60231
Jun:	44	5837	3687	2150	128615	60341
<u>2024-25</u>						
(Jul: - Apr:)	<u>44</u>	<u>5852</u>	<u>3719</u>	<u>2133</u>	<u>129487</u>	<u>60803</u>
Jul:	44	5831	3682	2149	129217	60715
Aug:	44	5876	3728	2148	129221	60720
Sep:	44	5878	3730	2148	129225	60723
Oct:	44	5816	3730	2086	129178	60513
Nov:	44	5876	3728	2148	129669	60837
Dec:	44	5896	3738	2158	129770	61038
Jan:	44	5876	3728	2148	129669	60837
Feb:	44	5820	3699	2121	129558	60800
Mar:	44	5825	3710	2115	129665	60900
Apr:	44	5830	3712	2118	129700	60950

* =Monthly averages over the ten month.

PERFORMANCE OF BEVERAGES INDUSTRY

Report for the month of April 2025

Coverage

The report covers Thirty (30) Beverages factories of the Punjab.

Production

The factories produced 229851 thousand litres of Soft Drinks and 18849 thousand litres of Fruit Juices during April 2025. The production of Soft Drinks and Fruit Juices was 12.0% lower and 2.5% higher than the last month respectively.

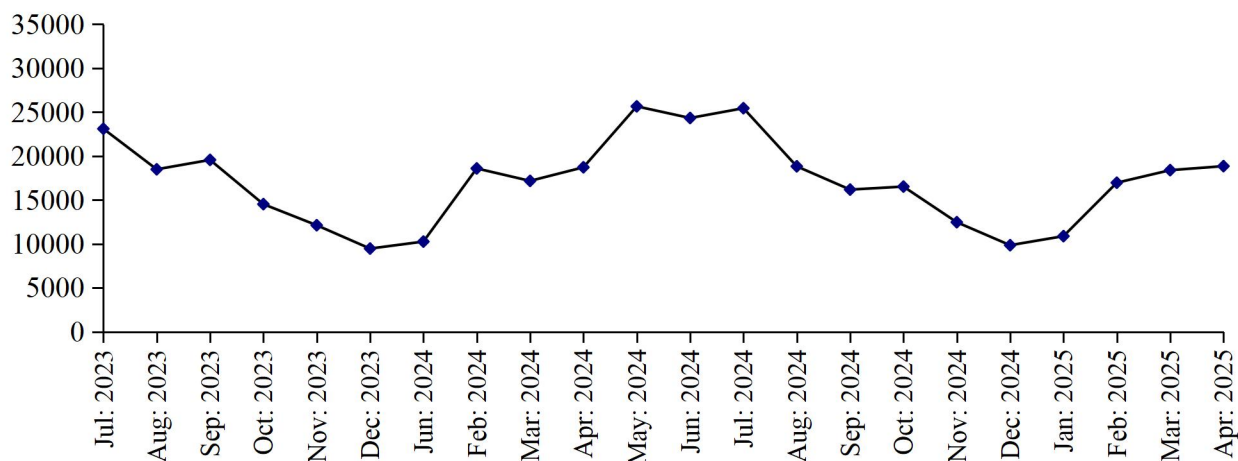
Employment

Total employment in these factories was 11643 which was 1.2% higher than the last month. Out of this total employment 7601 were production workers.

PRODUCTION OF FRUIT JUICES

July 2023 to April 2025

('000'Ltrs)



PRODUCTION OF SOFT DRINKS

July 2023 to April 2025

('000'Ltrs)

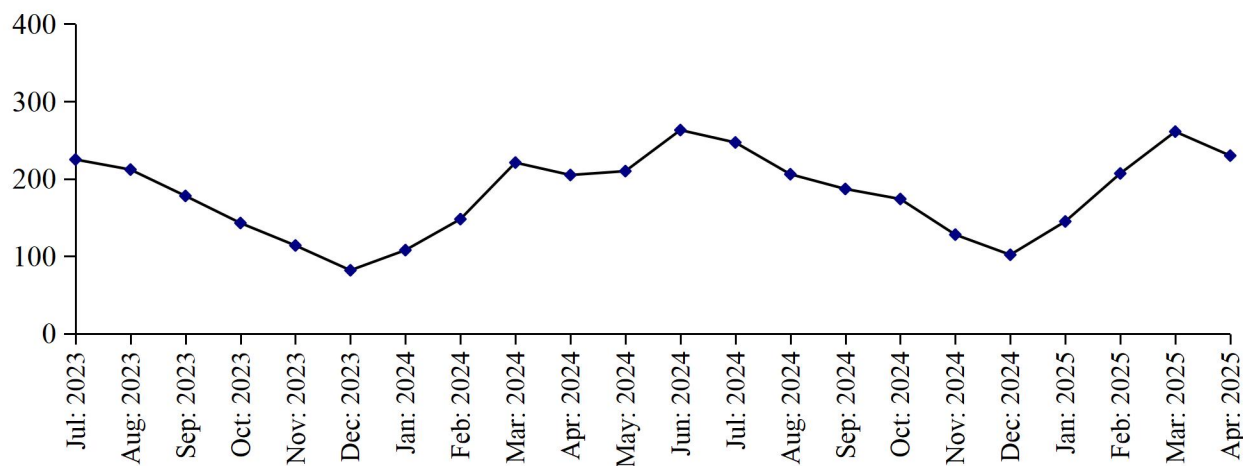


Table 18: MANUFACTURING ACTIVITY OF BEVERAGES INDUSTRY.

Year (July-June)/ Month	No. Of Reporting Units	PRODUCTION (in '000' Ltrs)		EMPLOYMENT (NOS.)*	
		Soft Drinks	Fruit Juices	Total	Production Workers
2008-09	37	1445760	67932	6492	3037
2009-10	37	1041643	68020	6925	3323
2010-11	37	982963	92115	7577	3027
2011-12	37	1155234	116048	7948	3136
2012-13	37	1349580	120176	8224	3501
2013-14	37	1409663	127571	8125	3659
2014-15	34	1552102	156889	8328	4379
2015-16	30	1722698	139237	15461	8600
2016-17	29	1964432	154877	8549	3997
2017-18	30	1893694	177397	8981	4216
2018-19	31	1830166	219885	8529	4306
2019-20	31	1587814	183550	8173	4099
2020-21	31	1964275	172608	7988	4053
2021-22	30	2258557	215698	8173	4210
2022-23	30	2196507	227924	8244	4267
2023-24	30	2110368	211991	9250	5424
(Jul: - Apr:)	30	1636477	162000	8794	4965
Jul:	30	225104	23104	8272	4309
Aug:	30	212098	18489	8240	4278
Sep:	30	178185	19560	7912	4283
Oct:	30	142799	14523	8141	4221
Nov:	30	114093	12122	8054	4197
Dec:	30	82479	9465	7962	4136
Jan:	30	108411	10259	7966	4157
Feb:	30	147817	18589	8332	4461
Mar:	30	220576	17171	11542	7815
Apr:	30	204915	18718	11514	7793
May:	30	210407	25656	11544	7731
June:	30	263484	24335	11523	7705
2024-25					
(Jul: - Apr:)	30	1887517	164370	11466	7712
Jul:	30	247096	25445	11585	8042
Aug:	30	206060	18827	11556	7722
Sep:	30	187336	16179	11522	7709
Oct:	30	174292	16523	11474	7634
Nov:	30	128057	12466	11402	7595
Dec:	30	101641	9848	11412	7560
Jan:	30	144704	10879	11186	7583
Feb:	30	207405	16962	11369	7794
Mar:	30	261075	18392	11508	7879
Apr:	30	229851	18849	11643	7601

* =Monthly Average over the ten month.

PERFORMANCE OF SUGAR INDUSTRY

Report for the month of April 2025

Coverage

This report covers Forty four (44) Sugar Mills located in the Punjab Province.

Cane Crushing

Total cane crushed for the month of “April” 2025, because of the off crushing season.

Production

Total Sugar Produced during the month of “April” 2025, is mill due to off season.

Sale and Stock of Sugar 2024-25

The sugar sold out from the previous stock as reported during the month of April 2025 was 28559 Metric Tons and the remaining stock of sugar is 949892 Metric Tons.

Employment and Wages / Salaries

Total employment during the month of April 2025 was 27504. Out of this total employment, the number of production workers were 19845. The total wages/salaries during this month is amounted to 630 million rupees.

MONTHLY PRODUCTION OF SUGAR

Season 2023-24 VS 2024-25

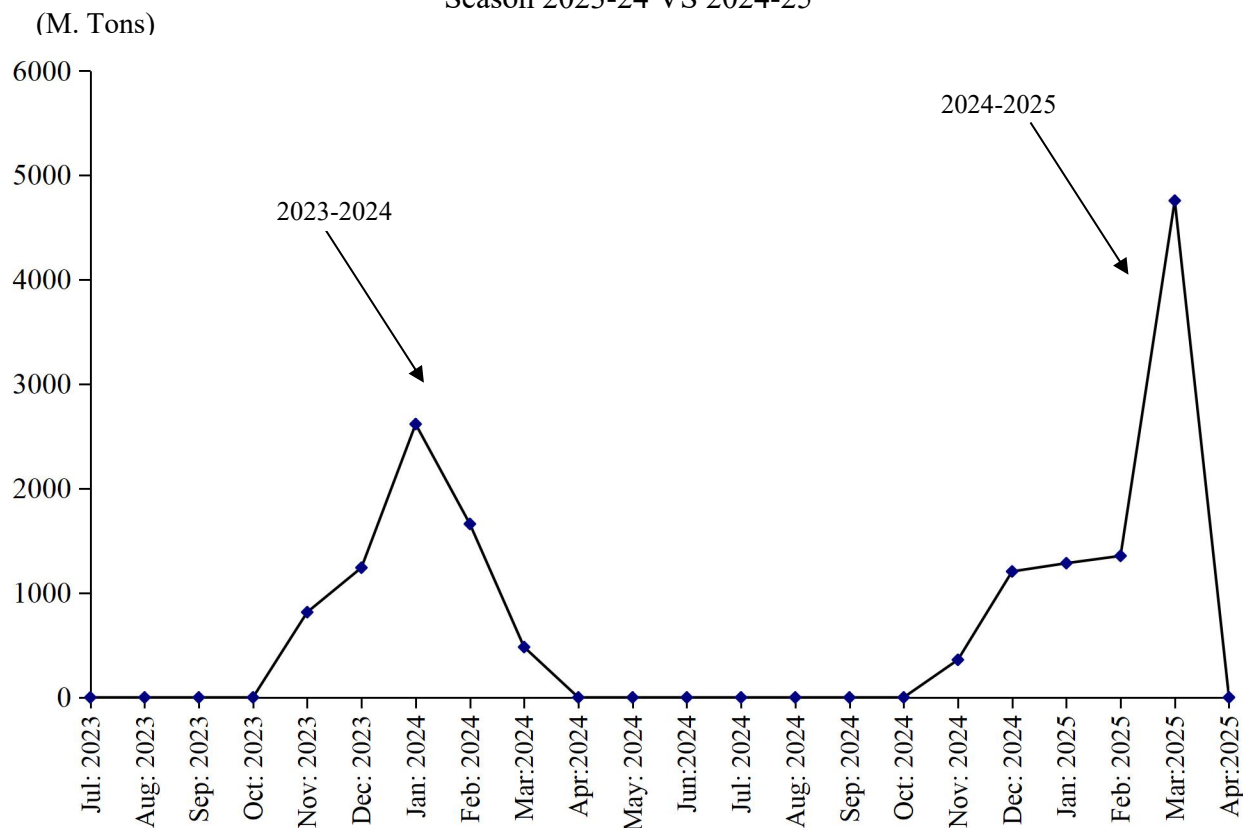


Table 19: MANUFACTURING ACTIVITY OF SUGAR INDUSTRY.

(Metric Tons)

Year	Months	No. Of Units Covered	Sugarcane Crushed	Opening Stock Of Sugar	Production Of Sugar	Sale Of Sugar	Closing Stock Of Sugar	Molasses
2008-09	Nov:08-Apr:09	45	20388990	-	1926209	-	-	1280422
2009-10	Nov:09 –March10	46	22460655	-	1987285	-	-	887362
2010-11	Nov:10 –April 11	46	27026172	128193	2475907	2013178	590922	709876
2011-12	Oct: 11- Apr: 12	46	32310644	590922	3057611	2633244	1015289	750699
2012-13	Nov:12–May 13	46	35745878	1015289	3739171	4064180	690280	666328
2013-14	Nov:13–Apr: 14	46	30864941	690280	3075144	2013384	1752040	807507
2014-15	Nov:14–Apr: 15	46	31453631	1752040	3036312	2775995	2012357	66682
2015-16	Nov:15–Apr: 16	44	28922605	2012357	2666278	2951038	1727597	571184
2016-17	Nov: 16-Apr: 17	44	44143327	1727597	4314228	2754948	3286877	1522522
2017-18	Nov: 17-Apr: 18	45	53190310	3286877	5111165	6745070	1652972	1352698
2018-19	Dec: 18-Apr: 19	45	30835769	1652972	4868545	4278122	2243395	1361477
2019-20	Nov: 19-Mar:20	44	23839905	1973322	3102104	4054794	1020632	671189
2020-21	Nov: 20-Mar:21	44	50011167	1020632	3877150	3620582	1277200	1166132
2021-22	Nov:21-Apr:22	44	47559505	1277200	5258131	4696627	1838704	2631504
2022-23	Nov:22-Apr:23	44	21410225	1838704	5575980	5397591	2017093	778634
2023-24	Nov: - Apr: 24	44	5352291	2017093	5104124	6019153	1102064	1164697
<u>2024-25</u>	<u>(Jul: – Apr:)</u>	<u>44</u>	<u>8464867</u>	<u>527849</u>	<u>4681455</u>	<u>4259412</u>	<u>949892</u>	<u>751203</u>
	Jul:	44	-	527849	-	79205	448644	-
	Aug:	44	-	448644	-	72293	376351	-
	Sep:	44	-	376351	-	77251	299100	-
	Oct:	44	-	299100	-	77100	222000	-
	Nov:	44	4587516	222000	360146	233600	348546	-
	Dec:	44	3696442	348546	1205651	272410	1281787	279658
	Jan:	44	159914	1281787	1285121	1307157	1259751	131818
	Feb:	44	11016	1259751	1354891	1411172	1203470	221215
	Mar:	44	9979	1203470	475646	443665	1235451	118512
	Apr:	44	-	1235451	-	285559	949892	-

TABLE 20: EMPLOYMENT AND WAGES / SALARIES

Year /Months	No. Of Units Covered	EMPLOYMENT (Nos.)			WAGES / SALARIES (000 Rs.)	
		Total	Production Workers	Office Staff	Total	Production Workers
2008-2009	45	21716	13193	8524	164256	95503
(Crushing Season)	45	27532	17387	10145	193291	119674
(Non-Crushing Season)	45	20262	12144	32473	156998	89461
2009-10	46	24448	15250	9197	197290	116870
(Crushing Season)	46	31580	20435	11145	247830	153135
(Non-Crushing Season)	46	19354	11547	7807	161190	90967
2010-11	46	22967	14468	8499	209749	126526
(Crushing Season)	46	27879	18340	9539	246395	154557
(Non-Crushing Season)	46	18055	10595	7459	173102	98495
2011-12	46	23078	13932	9145	230146	132212
(Crushing Season)	46	26017	10957	8007	204749	111423
(Non-Crushing Season)	46	18964	16058	9959	248287	147060
(2012-13)	46	25311	16021	9848	276892	171611
(Crushing Season)	46	28541	19094	10404	318296	203325
(Non-Crushing Season)	46	20788	11719	9069	127701	127212
(2013-14)	46	25672	16563	9009	318239	196709
(Crushing Season)	46	29968	19690	10278	366452	229798
(Non-Crushing Season)	46	21300	13907	7393	260446	162496
(2014-15)	46	23845	15042	8804	337354	207609
(Crushing Season)	46	27988	18137	9852	389645	244041
(Non-Crushing Season)	46	19703	11947	7755	285051	171178
(2015-16)	44	22554	14023	8531	341965	205969
(Crushing Season)	44	25752	16141	9611	388494	237002
(Non-Crushing Season)	44	19356	11738	7618	298435	174937
2016-17	45	24469	14900	9569	404061	250817
(Crushing Season)	45	30354	18632	11722	480241	305510
(Non-Crushing Season)	45	18583	11168	7415	327881	156664
2017-18	45	26874	16910	9964	588807	325440
(Crushing Season)	45	31429	20009	11419	706001	393686
(Non-Crushing Season)	45	22318	13810	8507	471613	257195
2018-19	45	28234	18208	10226	720481	406815
(Crushing Season)	45	32495	21556	10939	794668	459287
(Non-Crushing Season)	45	25190	15817	9373	667492	369336
2019-20	45	19599	12795	6834	419356	265765
(Crushing Season)	45	31689	21217	10472	722697	285965
(Non-Crushing Season)	45	22940	15223	9373	7717	507681
2020-21	44	27571	17326	10245	616305	359633
(Crushing Season)	44	33603	21507	12096	692380	424448
(Non-Crushing Season)	44	21538	13145	8393	540231	294819
2021-22	44	28202	17665	10537	680443	439798
(Crushing Season)	44	34807	21899	12908	760582	504374
(Non-Crushing Season)	44	21597	13430	8167	600255	375223
2022-23	44	28585	18343	10242	735006	503106
(Crushing Season)	44	36555	24339	12216	829622	487871
(Non-Crushing Season)	44	22893	14203	8690	667423	431143
2023-24	44	64390	43790	20600	752478	506309
(Crushing Season)	44	64390	24339	12216	781663	526791
(Non-Crushing Season)	44	22893	14203	8690	711619	485826
(Jul: – Apr:)	44	32323	22043	10280	770196	526906
Jul:	44	26736	19445	7291	727737	469194
Aug:	44	26277	18426	7851	747136	485558
Sep:	44	26736	19045	7691	739167	477087
Oct:	44	28066	20045	8021	748167	484087
Nov:	44	36271	22560	13711	796871	537916
Dec:	44	38071	23469	14602	818871	562363
Jan:	44	38012	25987	12025	834282	608811
Feb:	44	38245	25989	12256	835412	609913
Mar:	44	37316	25621	11695	824532	595421
Apr:	44	27504	19845	7659	629784	438712

*= Monthly average over the ten month./ crushing/Non crushing season.

PERFORMANCE OF CIGARETTES INDUSTRY

Report for the month of April 2025

Coverage

This report covers three (03) Cigarettes factories of the Punjab.

Production

The production of Cigarettes during the month was 1532 Million Nos. Which was 0.1% higher than March 2025.

Sale and Stock

Sale of Cigarettes during the month was 1645 Million Nos. Which was 0.1% higher the last month.

Employment

Total employment in these factories during the month was 657, which was 0.3% higher the last month. Out of this total employment, 422 were production workers. Total wages/salaries for the month were amounted to Rs.69.2 Millions.

PRODUCTION OF CIGARETTES

July 2023 to April 2025

(Millions Nos.)

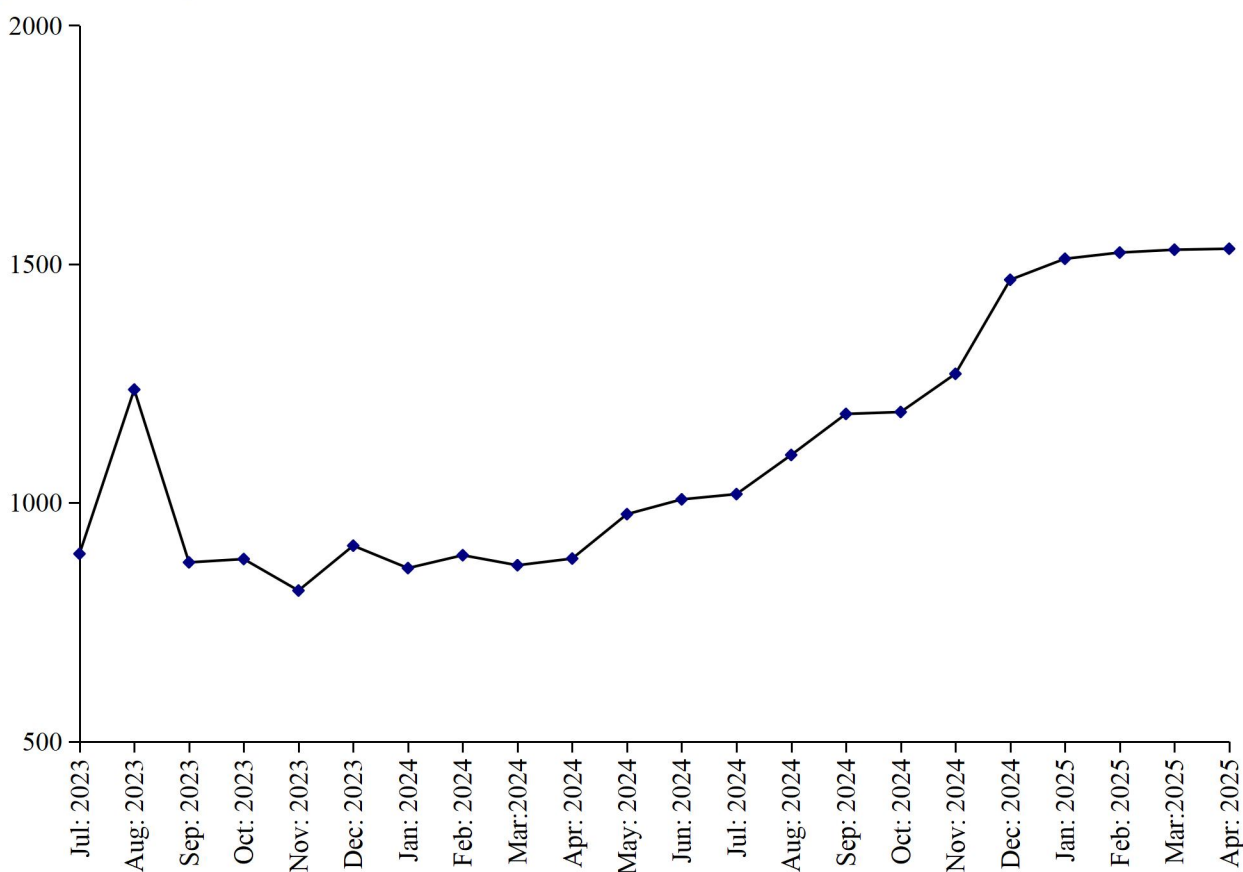


Table No.21

MANUFACTURING ACTIVITY OF CIGARETTES INDUSTRY.

Year (July-June)/ Month	No. Of Reporting Units	PRODUCTION,SALE & STOCK OF CIGARETTES (<i>Million Nos.</i>)			EMPLOYMENT* (<i>Nos.</i>)		WAGES/SALARIES (<i>'000'Rs.</i>)	
		Production	Sale	Stock at the end	Total	Production Workers	Total	Production Workers
2008-09	3	43058.0	42901.0	667	1307	1089	23946	18512
2009-10	3	37296.0	36987.0	976	1269	1136	26379	20638
2010-11	3	37944	37420	1500	1178	1051	28432	25294
2011-12	3	34955	35961	494	998	898	32942	29936
2012-13	3	37845	37996	343	907	811	27023	22214
2013-14	3	33094	24934	8503	904	797	27781	22032
2014-15	3	33966	38328	4141	905	793	32807	24413
2015-16	3	27502	29914	1729	808	707	33019	24855
2016-17	3	28452	274135	3046	603	509	33264	25008
2017-18	3	28324	30503	867	509	425	32139	23057
2018-19	3	35850	27486	9231	552	446	36978	21686
2019-20	3	25634	21861	13234	640	493	45641	20945
2020-21	3	21353	19306	15124	657	494	50439	21564
2021-22	3	19438	19013	15549	658	490	55998	24776
2022-23	3	15820	23373	7996	618	414	64979	33029
2023-24	3	11101	16698	2075	600	359	68659	29570
(Jul: -Apr:)	3	<u>9118</u>	<u>14868</u>	<u>2246</u>	<u>595</u>	<u>352</u>	<u>68614</u>	<u>29831</u>
Jul:	3	893	2357	6532	591	405	69943	38353
Aug:	3	1237	2109	5660	585	325	68244	34307
Sep:	3	875	2222	4313	586	325	68730	28207
Oct:	3	882	2122	3073	586	325	68725	28195
Nov:	3	816	1022	2867	586	325	68725	28195
Dec:	3	910	1010	2767	583	324	68730	28107
Jan:	3	863	935	2695	583	324	68730	28207
Feb:	3	890	1022	2563	616	388	68745	28215
Mar:	3	869	1019	2413	616	388	68734	28212
Apr:	3	883	1050	2246	619	390	66833	28315
May	3	976	1019	2203	624	393	68734	28215
Jun:	3	1007	1135	2075	628	395	69034	28315
<u>2024-25</u>								
(Jul: - Apr:)	<u>3</u>	<u>13328</u>	<u>13020</u>	<u>2383</u>	<u>646</u>	<u>411</u>	<u>69118</u>	<u>28525</u>
Jul:	3	1018	1119	1974	632	400	69034	28315
Aug:	3	1100	1115	1959	632	400	69034	28315
Sep:	3	1186	1123	2022	634	402	69037	28318
Oct:	3	1190	1119	2093	645	405	69241	28430
Nov:	3	1270	1130	2233	647	410	69037	28180
Dec:	3	1467	1142	2558	653	416	69147	30318
Jan:	3	1511	1542	2527	653	416	69137	28318
Feb:	3	1524	1442	2609	655	420	69137	28318
Mar:	3	1530	1643	2496	655	420	69137	28315
Apr:	3	1532	1645	2383	657	422	69237	28418

* = Monthly Average over the ten month.

PERFORMANCE OF CEMENT INDUSTRY

Report for the month of April 2025

Coverage

This report covers eleven (11) factories in the Punjab.

Production of Clinker

The cement factories produced 1465123 Metric Tons of Clinker during April 2025, which was 5.6% higher than the last month. The factories consumed 1246384 Metric Tons of Clinker to produce Cement.

Production of Cement

The cement factories produced 1685463 Metric Tons of Cement during the month, which was 4.4% lower than the last month.

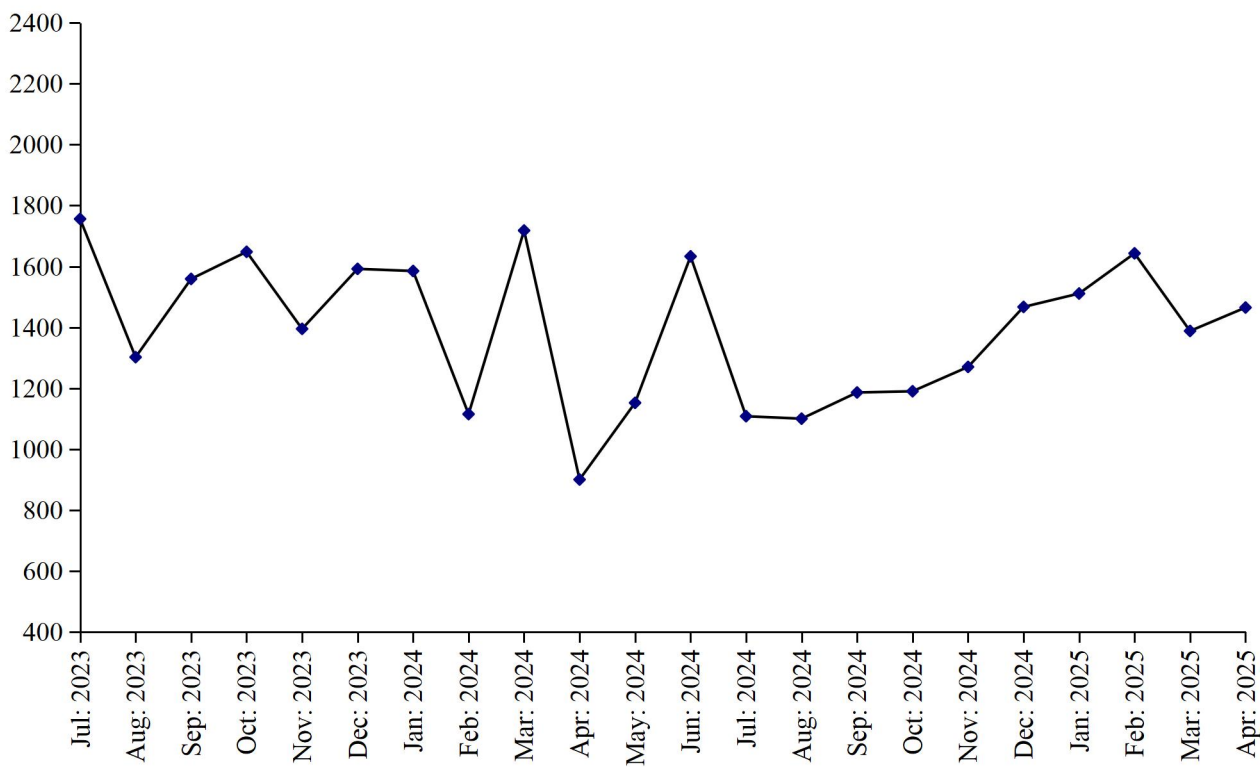
Employment

Total employment in the factories as reported was 7422 which is 0.3% lower than the last month. Out of this total employment, 4356 were production workers. Total wages/salaries for the month under report were 848.2 Million Rupees.

PRODUCTION OF CLINKER

July 2023 to April 2025

(000 M. Tons)



PRODUCTION OF CEMENT

July 2023 to April 2025

(000 M. Tons)

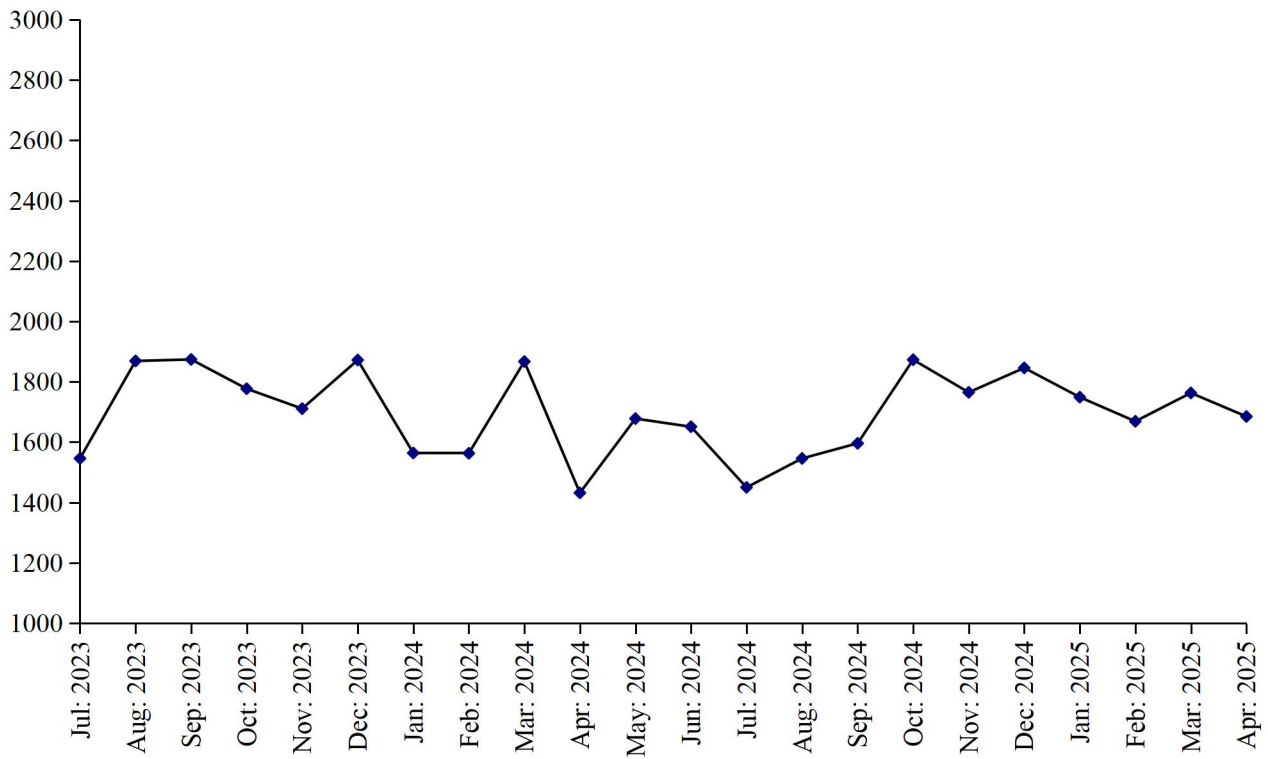


Table No.22 DETAIL OF PRODUCTION, CONSUMPTION AND STOCK OF CLINKER.

(M.Tons)

Year (July-June)/ Month	No. Of reporting Units	Stock at the Beginning	Production	Consumption	Stock at the end
2008-09	13	397777	14275929	13996684	677022
2009-10	13	677022	15438372	15593172	522222
2010-11	13	522222	14340746	13920004	942964
2011-12	13	942964	13937197	13851368	1028793
2012-13	12	1028793	15210981	14730923	1508851
2013-14	12	1508851	15780981	15535319	1754513
2014-15	12	1754513	15926314	15853807	1827020
2015-16	12	1827020	15973852	17140392	660480
2016-17	12	660480	19101688	18498074	1264094
2017-18	12	1264094	20080615	19767345	1577364
2018-19	12	1577364	18892935	18992061	1478238
2019-20	12	1478238	19838457	19197793	2118902
2020-21	12	2118902	21735282	21668097	2186087
2021-22	12	2186087	22442834	22063309	2565612
2022-23	12	2251510	19792339	19864127	2179722
2023-24	12	2179722	17353831	17763049	1770504
(Jul: - Apr:)	<u>12</u>	<u>2179722</u>	<u>14568933</u>	<u>14773236</u>	<u>1975419</u>
Jul:	12	2179722	1755582	1288545	2646759
Aug:	12	2646759	1301811	1601107	2347463
Sep:	12	2347463	1558920	1635401	2270982
Oct:	12	2270982	1647523	1656235	2262270
Nov:	12	2262270	1394661	1498822	2158109
Dec:	12	2158109	1591750	1627574	2122285
Jan:	12	2122285	1585141	1323839	2383587
Feb:	12	2383587	1115204	1320396	2178395
Mar:	12	2178395	1718283	1610476	2286202
Apr:	12	2286202	900058	1210841	1975419
May:	12	1975419	1151859	1665576	1461702
Jun:	12	1461702	1633039	1324237	1770504
<u>2024-25</u>					
(Jul: - Apr:)	<u>11</u>	<u>1770504</u>	<u>14272535</u>	<u>14470193</u>	<u>1572846</u>
Jul:	11	1770504	1108415	1201412	1677507
Aug:	11	1677507	1375146	1328510	1724143
Sep:	11	1724143	1255231	1460985	1518389
Oct:	11	1518389	1664866	1641220	1542035
Nov:	11	1542035	1691967	1495868	1738134
Dec:	11	1738434	1430184	1632683	1535635
Jan:	11	1535635	1250397	1491025	1295007
Feb:	11	1295007	1643585	1434868	1503724
Mar:	11	1503724	1387621	1537238	1354107
Apr:	11	1354107	1465123	1246384	1572846

Table No.23 DETAIL OF PRODUCTION, SALE AND STOCK OF CEMENT

(M.Tons)

Year (July- June)/ Month	No. Of Reporting Units	Stock at the beginning	Production	S O L D			Stock at the end
				Total	Within country	Export- ed	
2008-09	13	91271	14227580	14068486	14068486	-	250365
2009-10	13	250365	16951531	16973086	16973086	-	228810
2010-11	13	228810	14685518	14528966	14528966	-	385362
2011-12	13	385362	15269328	15299852	15299852	-	354838
2012-13	12	354838	15929819	15922363	15922363	-	362294
2013-14	12	362294	16668915	16472689	16472689	-	558520
2014-15	12	558520	17175158	17358446	17358446	-	375232
2015-16	12	375232	18479957	18588721	18588721	-	266468
2016-17	12	266468	19569160	19445145	19445145	-	390483
2017-18	12	390483	22067871	22188484	22188484	-	269870
2018-19	12	269870	21077461	20903996	20903996	-	443335
2019-20	12	443335	20386575	20021979	20021979	-	807931
2020-21	12	807931	24535481	24360442	24360442	-	982970
2021-22	12	982970	25551134	25220928	25220928	-	1313176
2022-23	12	1313176	22316924	22263250	22263250	-	1366850
2023-24	12	1366850	20380376	20362441	20362441	-	1384785
(Jul: - Apr:)	12	1366850	17051870	16843829	16843829	=	1574891
Jul:	12	1366850	1545757	1495974	1495974	-	1416633
Aug:	12	1416633	1868539	1887634	1887634	-	1397538
Sep:	12	1397538	1873939	1789233	1789233	-	1482244
Oct:	12	1482244	1777130	1712812	1712812	-	1546562
Nov:	12	1546562	1711240	1712369	1712369	-	1545433
Dec:	12	1545433	1871814	1831915	1831915	-	1585332
Jan:	12	1585332	1563532	1571862	1571862	-	1577002
Feb:	12	1577002	1540846	1563253	1563253	-	1554595
Mar:	12	1554595	1866972	1836400	1836400	-	1585167
Apr:	12	1585167	1432101	1442377	1442377	-	1574891
May:	12	1574891	1677744	1834599	1834599	-	1418036
Jun:	12	1418036	1650762	1684013	1084013	-	1384785
2024 - 25							
(Jul: - Apr:)	11	1384785	16942951	16979521	16979521	=	1348215
Jul:	11	1384785	1449889	1409990	1409990	-	1424684
Aug:	11	1424684	1546040	1568924	1568924	-	1401800
Sep:	11	1401800	1596184	1617710	1617710	-	1380274
Oct:	11	1380274	1873163	1837102	1837102	-	1416335
Nov:	11	1416335	1765037	1829748	1829748	-	1351624
Dec:	11	1351624	1846320	1836514	1836514	-	1361430
Jan:	11	1361430	1749116	1780924	1780924	-	1329622
Feb:	11	1329622	1668633	1691014	1691014	-	1307241
Mar:	11	1307241	1763106	1702449	1702449	-	1367898
Apr:	11	1367898	1685463	1705146	1705146	-	1348215

Table No.24 EMPLOYMENT AND WAGES/SALARIES OF CEMENT INDUSTRY

Year (July-June)/ Month	No. Of Reporting Units	EMPLOYMENT (No)*			WAGES/SALARIES (000 Rs.)	
		Total	Production Workers	Non-Production Workers	Total	Production Workers
2008-09	13	5858	3906	1952	137089	755759
2009-10	13	6272	4292	1980	157409	80564
2010-11	13	6713	4631	2082	177979	94502
2011-12	13	6614	4729	1885	195861	115717
2012-13	12	6463	4591	1872	226498	135792
2013-14	12	6593	4648	1945	241852	140576
2014-15	12	6767	4817	1950	301847	178187
2015-16	12	7046	5009	2037	384190	222124
2016-17	12	7627	5178	2448	521509	292515
2017-18	12	8033	5262	2771	729712	399586
2018-19	12	8077	5360	2717	668155	384602
2019-20	12	7988	5400	2588	634682	387052
2020-21	12	7912	5328	2583	661961	405863
2021-22	12	7969	5325	2644	717914	438054
2022-23	12	7394	4514	2880	668006	366140
2023-24	12	7353	4335	3018	785991	399350
(Jul: - Apr:)	<u>12</u>	<u>7337</u>	<u>4351</u>	<u>2986</u>	<u>783842</u>	<u>404525</u>
Jul:	12	7135	4416	2719	712882	379167
Aug:	12	7298	4346	2952	795629	412115
Sep:	12	7314	4359	2955	774383	404138
Oct:	12	7310	4351	2959	793464	419529
Nov:	12	7309	4342	2967	785894	407272
Dec:	12	7278	4325	2953	779116	404152
Jan:	12	7428	4423	3005	800427	437245
Feb:	12	7425	4416	3009	802452	433885
Mar:	12	7436	4263	3173	799015	376211
Apr:	12	7434	4265	3169	795162	371536
May:	12	7436	4262	3174	796420	373201
Jun:	12	7433	4256	3177	797048	373752
<u>2024 - 25</u>						
(Jul: - Apr:)	<u>11</u>	<u>7459</u>	<u>4348</u>	<u>3111</u>	<u>852973</u>	<u>424803</u>
Jul:	11	7422	4249	3173	799199	373700
Aug:	11	7420	4246	3174	863143	407702
Sep:	11	7490	4374	3116	880073	551575
Oct:	11	7457	4356	3111	875651	427005
Nov:	11	7501	4399	3102	856606	416261
Dec:	11	7493	4387	3106	862047	418083
Jan:	11	7474	4385	3089	850186	414207
Feb:	11	7466	4375	3091	847149	415118
Mar:	11	7442	4358	3084	847471	413587
Apr:	11	7422	4356	3066	848202	410790

* = Monthly average over the ten month.

PERFORMANCE OF FERTILIZER INDUSTRY

Report for the month of April 2025

Coverage

This report covers Seven (07) fertilizer factories in the Punjab Province.

Production

These factories produced 329967 Metric Tons of Urea, 0 Metric Tons of Super Phosphate, 70500 Metric Tons of Amm. Nitrate and 67431 Metric Tons of Nitro Phosphate. The overall production of Fertilizer during the month was 2.6% higher than the last month.

Sale and Stock

These fertilizer factories reported a sale of 97361 Metric Tons of Urea, 0 Metric Tons of Super phosphate, 70500 Metric Tons of Amm. Nitrate and 67531 Metric Tons of Nitro Phosphate. The stock of Urea, Super Phosphate, Amm. Nitre and Nitro Phosphate at the end of the month was 342473, 0, 4430 and 8389 Metric Tons respectively.

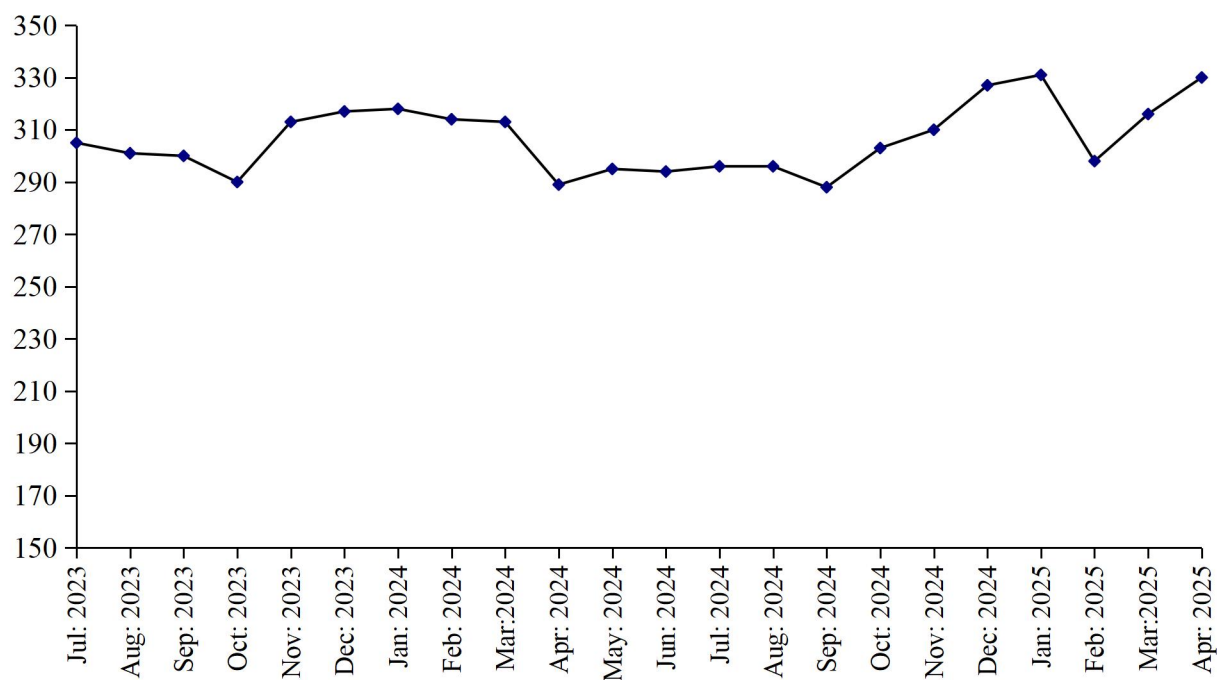
Employment and Wages/Salaries

Total employment during the month was 5540 which was same as the last month. Out of this total employment 3492 were production workers. Total Wages/Salaries for the month under report were amounted to 1214 Million Rupees.

PRODUCTION OF UREA

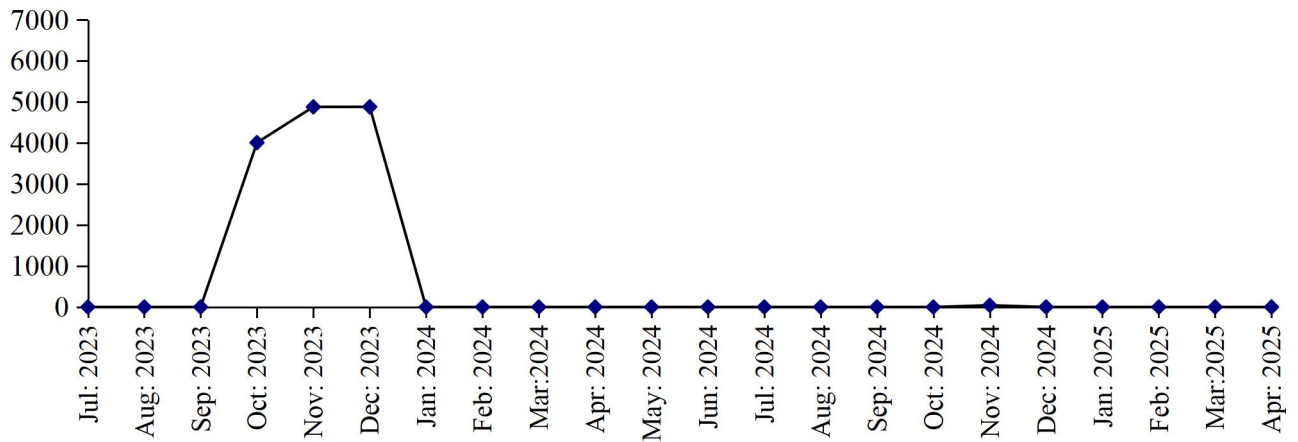
July 2023 to April 2025

(000 M. Tons)



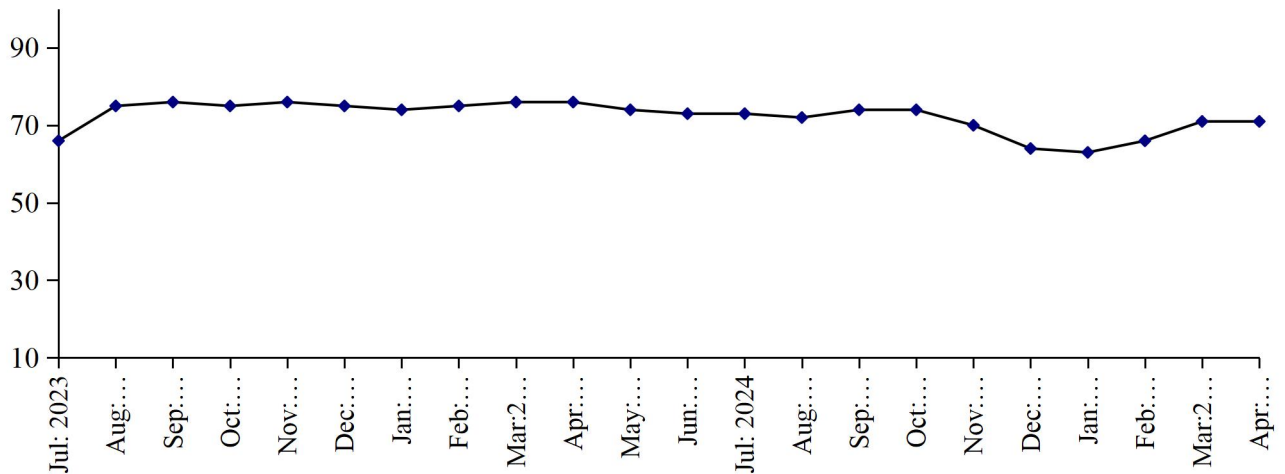
PRODUCTION OF SUPER PHOSPHATE

(000 M. Tons) July 2023 to April 2025



PRODUCTION OF AMM. NITRATE

(000 M. Tons) July 2023 to April 2025



PRODUCTION OF NITRO PHOSPHATE

(000 M. Tons) July 2023 to April 2025

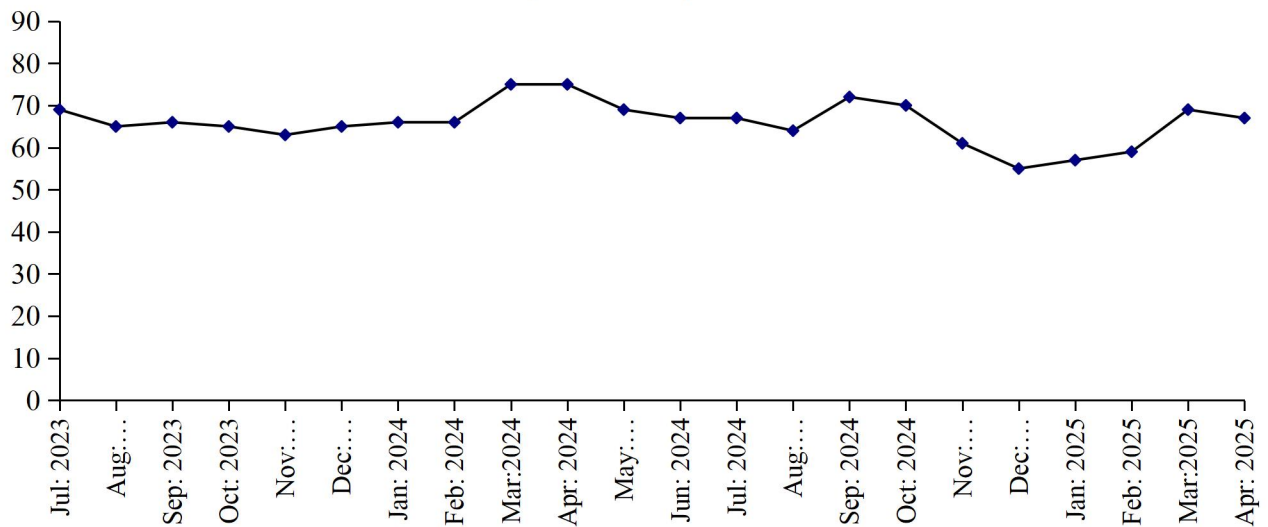


Table No: 25 DETAIL OF PRODUCTION, SALE AND STOCK OF UREA AND AMM. SULPHATE

(M. Tons)

Year (July-June)/ Month	U R E A			AMM. SULPHATE		
	Production	Sale	Stock at The end	Production	Sale	Stock at the end
2008-09	3377275	3404025	15570	-	-	-
2009-10	3431545	3374056	73059	-	-	-
2010-11	3016783	3064387	25455	-	-	-
2011-12	2750392	2701061	74786	-	-	-
2012-13	2592718	2639313	28191	-	-	-
2013-14	2582330	2539991	70530	-	-	-
2014-15	2459980	2505550	24960	-	-	-
2015-16	2856143	2392405	488698	-	-	-
2016-17	2808518	2895909	401307	-	-	-
2017-18	2987690	3367935	21062	-	-	-
2018-19	3181203	3133449	68816	-	-	-
2019-20	3201765	3251695	18886	-	-	-
2020-21	3268768	3132828	154826	-	-	-
2021-22	3381465	3514260	22031	-	-	-
2022-23	3280655	3190837	111849	-	-	-
2023-24	3648810	3682460	111849	-	-	-
(Jul: - Apr:)	<u>3060082</u>	<u>3143435</u>	<u>28496</u>	=	=	=
Jul:	305490	333356	83983	-	-	-
Aug:	300678	334262	50399	-	-	-
Sep:	299915	318181	32133	-	-	-
Oct:	289556	288661	33028	-	-	-
Nov:	312546	310221	35353	-	-	-
Dec:	317452	315365	37440	-	-	-
Jan:	318002	315621	39821	-	-	-
Feb:	314235	313209	40847	-	-	-
Mar:	313174	324125	29896	-	-	-
Apr:	289034	290434	28496	-	-	-
May	294507	257058	65945	-	-	-
Jun:	294221	281967	78199	-	-	-
<u>2024-25</u>						
(Jul: - Apr:)	<u>3095510</u>	<u>2831256</u>	<u>342453</u>	=	=	=
Jul:	296039	278614	956624	-	-	-
Aug:	295790	282514	108900	-	-	-
Sep:	287823	250080	146643	-	-	-
Oct:	303257	204790	245110	-	-	-
Nov:	309811	264608	290313	-	-	-
Dec:	327454	517592	100175	-	-	-
Jan:	331403	403055	28523	-	-	-
Feb:	298097	254885	71735	-	-	-
Mar:	315869	277757	109847	-	-	-
Apr:	329967	97361	342453			

Table No:26 DETAIL OF PRODUCTION, SALE AND STOCK OF SUPER PHOSPHATE AND AMM. NITRATE
(M. Tons)

Year (July-June)/ Month	SUPER PHOSPHATE			AMM. NITRATE		
	Production	Sale	Stock at The end	Production	Sale	Stock at the end
2008-09	89171	75025	26904	344334	339921	4421
2009-10	46952	56524	17332	345735	330963	19193
2010-11	126909	137940	6301	298029	307696	9526
2011-12	123294	90442	39153	228664	227808	10382
2012- 13	44638	42997	40794	26574	36898	58
2013-14	10081	29493	21382	119631	119539	150
2014-15	18706	25502	14586	113541	65804	47887
2015-16	28023	33404	9205	237844	169639	116092
2016-17	23815	9546	23474	226183	328008	14267
2017-18	1027	23807	694	553091	532829	34529
2018-19	18244	18828	110	456249	487629	3149
2019-20	9034	9122	22	548571	544771	6949
2020-21	31087	28244	2865	756461	762169	1241
2021-22	28780	25353	6292	821680	819768	3153
2022-23	6884	5356	7820	799008	800476	1685
2023-24	4007	10145	5	892412	889500	4597
(Jul: - Apr:)	<u>4007</u>	<u>11801</u>	<u>26</u>	<u>744711</u>	<u>745631</u>	<u>765</u>
Jul:	-	991	6829	66126	66126	1685
Aug:	-	1776	5053	75261	75606	1340
Sep:	-	500	4553	76191	76796	735
Oct:	4007	4033	4527	75159	75159	735
Nov:	-	4125	402	75899	75938	696
Dec:	-	100	302	74587	74628	655
Jan:	-	200	102	74180	74115	720
Feb:	-	46	56	75111	75046	785
Mar:	-	-	56	76112	73303	3594
Apr:	-	30	26	76085	78914	765
May	-	16	10	74520	74544	741
Jun:	-	5	5	73181	69325	4597
<u>2024- 25</u>						
(Jul: - Apr:)	<u>42</u>	<u>42</u>	<u>5</u>	<u>696850</u>	<u>697017</u>	<u>4430</u>
Jul:	0	0	5	72885	68925	8557
Aug:	0	0	5	71557	69056	11058
Sep:	0	0	5	74438	83440	2056
Oct:	0	0	5	74787	74300	2543
Nov:	42	42	5	69572	69085	3030
Dec:	0	0	5	63844	62444	4430
Jan:	0	0	5	62600	62600	4430
Feb:	0	0	5	65667	65667	4430
Mar:	0	0	5	71000	71000	4430
Apr:	0	0	5	70500	70500	4430

Table No: 27 DETAIL OF PRODUCTION, SALE AND STOCK OF NITRO PHOSPHATE.

(M.Tons)

Year (July-June)/ Month	Production	Sale	Stock at the end
2008-09	305678	362938	4771
2009-10	304444	286441	22774
2010-11	265490	287894	370
2011-12	198799	198818	351
2012- 13	22109	22460	0
2013-14	122494	122478	16
2014-15	101171	93467	7720
2015-16	221059	228779	0
2016-17	274512	269570	4942
2017-18	455002	459944	0
2018-19	449667	449667	0
2019-20	624396	615632	8764
2020-21	845493	846511	7746
2021-22	835140	832990	9896
2022-23	770063	778152	1807
2023-24	814083	810751	5139
(Jul: - Apr:)	<u>677747</u>	<u>679058</u>	<u>496</u>
Jul:	69499	69248	2058
Aug:	65135	66324	869
Sep:	66055	65963	961
Oct:	65297	65963	295
Nov:	63254	63523	26
Dec:	65471	65274	223
Jan:	65999	65802	420
Feb:	66197	66000	617
Mar:	75421	72618	3420
Apr:	75419	78343	496
May:	69261	69635	122
June:	67075	62058	5139
<u>2024 - 25</u>			
(Jul: - Apr:)	<u>641616</u>	<u>638366</u>	<u>8389</u>
Jul:	66806	61351	10594
Aug:	64206	60751	14049
Sep:	71847	82224	3672
Oct:	69944	70124	3492
Nov:	60922	59456	4958
Dec:	55305	54840	5423
Jan:	57267	55684	7006
Feb:	58888	57305	8589
Mar:	69000	69100	8489
Apr:	67431	67531	8389

Table No: 28 EMPLOYMENT AND WAGES/SALARIES OF FERTILIZER INDUSTRY*

Year (July-June) / Month	No. Of Working Units	E M P L O Y M E N T (Nos.)*			WAGES/SALARIES (000 Rs.)	
		Total	Production Workers	Office Staff	Total	Production Workers
2008-09	5	4710	3316	1394	209439	132521
2009-10	5	4878	3388	1490	273098	166113
2010-11	6	5161	3496	1665	310502	181462
2011-12	6	5407	3671	1736	353344	207054
2012-13	6	5136	3469	1667	363237	210167
2013-14	6	4720	3121	1599	395486	224472
2014-15	6	5090	3015	2075	433858	222449
2015-16	6	5473	3070	2403	489752	235912
2016-17	6	5260	3045	2215	494139	260682
2017-18	7	6020	3616	2404	545307	287497
2018-19	7	6141	3663	2478	573893	295543
2019-20	7	5714	3443	2270	600079	321309
2020-21	7	5700	3590	2110	638195	355515
2021-22	7	5567	3647	1920	743477	417103
2022-23	7	5475	3516	1959	938617	494865
2023-24	7	5469	3448	2021	1315012	620419
(Jul: - Apr:)	<u>7</u>	<u>5460</u>	<u>3433</u>	<u>2026</u>	<u>1270711</u>	<u>569063</u>
Jul:	7	5395	3413	1983	1025644	451525
Aug:	7	5396	3412	1984	1040464	546108
Sep:	7	5400	3416	1984	1040646	546108
Oct:	7	5450	3414	2036	1040604	546108
Nov:	7	5460	3417	2043	1042908	547200
Dec:	7	5465	3420	2045	1492000	599212
Jan:	7	5507	3464	2043	1495587	611439
Feb:	7	5504	3435	2069	1498922	614129
Mar:	7	5505	3470	2035	1500010	614300
Apr:	7	5510	3478	2032	1530327	614500
May	7	5515	3480	2035	1530334	614789
Jun:	7	5524	3484	2040	1533548	615800
<u>2024 - 25</u>						
(Jul: - Apr:)	<u>7</u>	<u>5526</u>	<u>3483</u>	<u>2041</u>	<u>1152794</u>	<u>615992</u>
Jul:	7	5520	3481	2039	1065669	542970
Aug:	7	5522	3484	2038	1066007	543100
Sep:	7	5520	3481	2039	1067100	544200
Oct:	7	5525	3482	2043	1067623	544967
Nov:	7	5527	3481	2046	1203000	650019
Dec:	7	5526	3481	2045	1209446	652166
Jan:	7	5528	3482	2046	1210096	670200
Feb:	7	5527	3481	2046	1212000	670400
Mar:	7	5523	3489	2034	1212999	670700
Apr:	7	5540	3492	2031	1214000	671200

* = Monthly averages over the ten month..

PERFORMANCE OF FOOTWEAR INDUSTRY

Report for the month of April 2025

Coverage

This report covers Forty One (41) factories of Footwear Industry in the Punjab Province.

Production

The factories produced 3166 thousand Pairs of Footwear during the current month, which was 1.0% lower than the previous month.

Employment

Total employment in these factories during the current month was 12780, which was 0.2% lower than the previous month. Out of this total employment, 9335 were production workers.

PRODUCTIN OF FOOTWEAR

July 2023 to April 2025

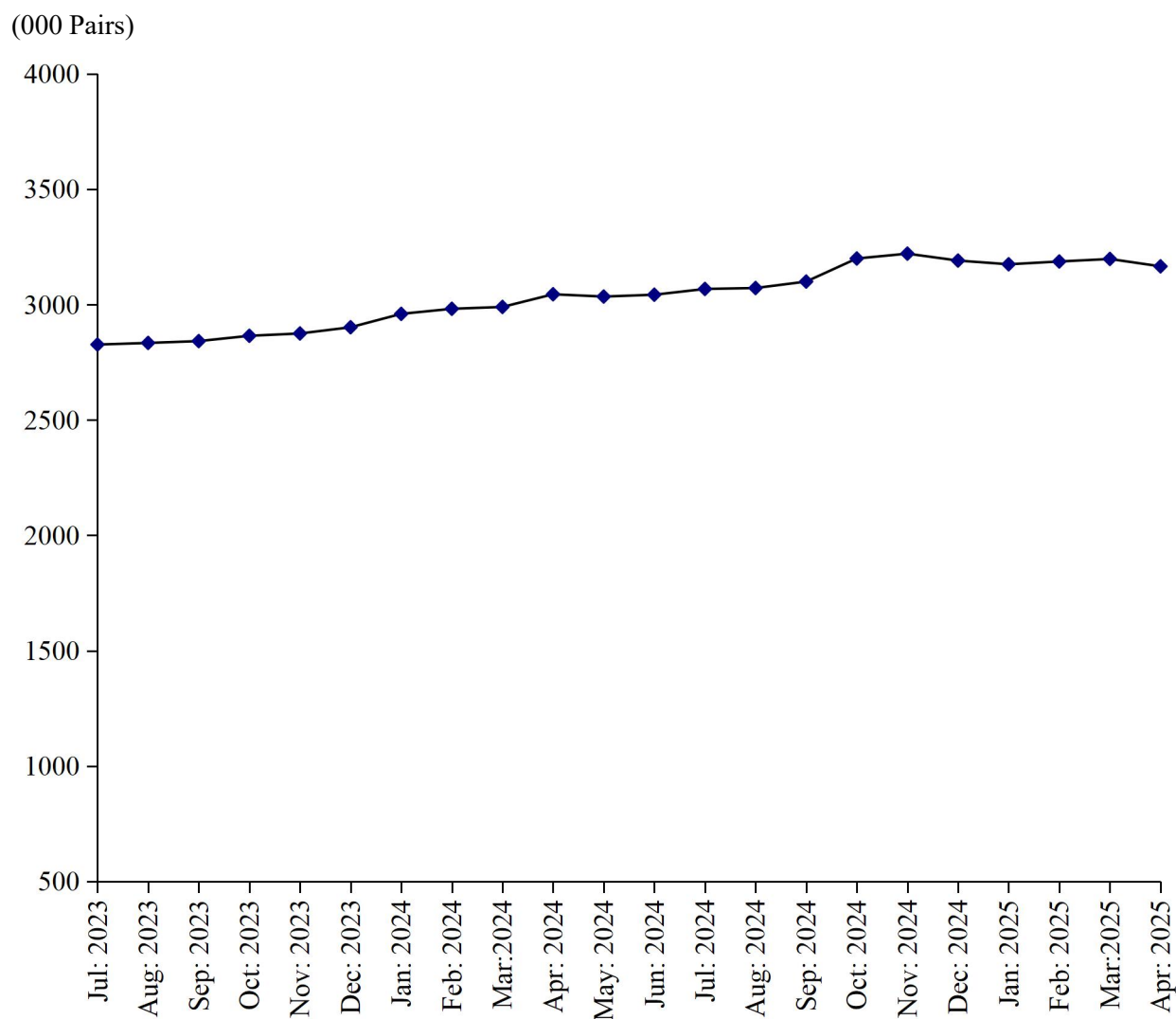


Table No.29 MANUFACTURING ACTIVITY OF FOOTWEAR INDUSTRY

Year (July-June)/ Month	No. Of Reporting Units	Production Of Footwear (000) Pairs)	EMPLOYMENT (NOS.) *	
			Total	Production Workers
2008-09	16	30979	8521	7038
2009-10	16	34817	8667	7152
2010-11	40	41008	9699	8116
2011-12	40	41944	9719	8535
2012-13	40	43232	9997	8536
2013-14	40	45030	9967	7937
2014-15	40	55136	9523	7398
2015-16	40	60462	10350	7959
2016-17	41	45476	9778	7401
2017-18	41	37411	9758	7477
2018-19	41	38805	9844	7783
2019-20	41	37860	10346	8451
2020-21	41	25658	10158	7745
2021-22	41	29843	11939	9145
2022-23	41	32298	12422	9367
2023-24	41	35200	12648	9357
(Jul: - Apr:)	<u>41</u>	<u>29122</u>	<u>12622</u>	<u>9364</u>
Jul:	41	2827	12467	9342
Aug:	41	2834	12467	9342
Sep:	41	2842	12567	9348
Oct:	41	2865	12575	9351
Nov:	41	2875	12580	9360
Dec:	41	2902	12690	9375
Jan:	41	2960	12693	9378
Feb:	41	2982	12693	9378
Mar:	41	2990	12693	9378
Apr:	41	3045	12795	9392
May	41	3035	12790	9332
June	41	3043	12770	9313
<u>2024-25</u>				
(Jul: - Apr:)	<u>41</u>	<u>31578</u>	<u>12806</u>	<u>9353</u>
July	41	3068	12775	9320
Aug:	41	3072	12816	9362
Sep:	41	3100	12818	9364
Oct:	41	3200	12821	9366
Nov:	41	3221	12826	9368
Dec:	41	3191	12813	9362
Jan:	41	3175	12803	9352
Feb:	41	3187	12803	9352
Mar:	41	3198	12803	9352
Apr:	41	3166	12780	9335

* = Monthly Average over the ten month.

PERFORMANCE OF LEATHER TANNING INDUSTRY

Report for the month of April 2025

Coverage

The report for the month covers one Hundred and Six (106) Tanneries working in the Punjab Province.

Production

These Tanneries produced 753 thousand Sq. Mtrs. of Upper Leather and 16 M. Tons of Sole Leather during the current month. The Production of Upper Leather during the month was 4.2% lower than the previous month.

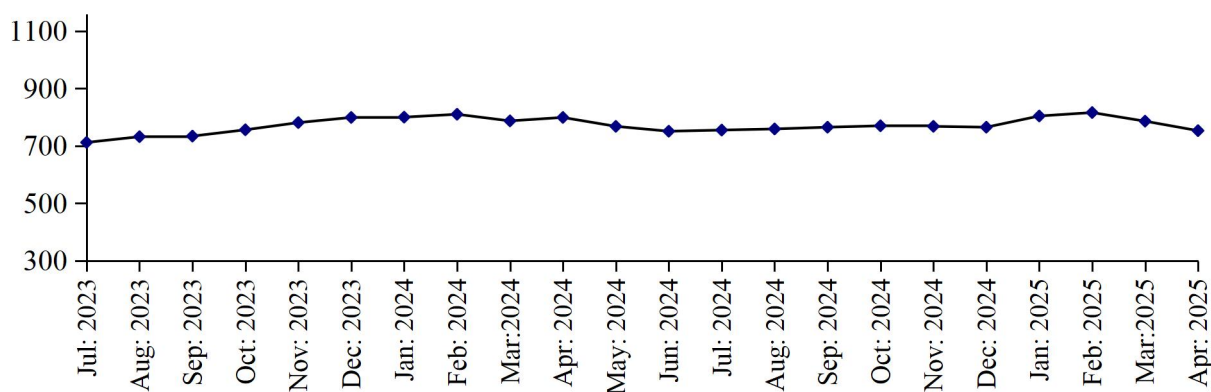
Employment

Total employment in these factories was 2229 persons which was 4.3% lower than the last month. Out of this total employment 1564 persons were production workers.

PRODUCTION OF UPPER LEATHER

July 2023 to April 2025

(000 Sq. Mtrs)



PRODUCTION OF SOLE LEATHER

July 2023 to April 2025

(000 M. Tons)

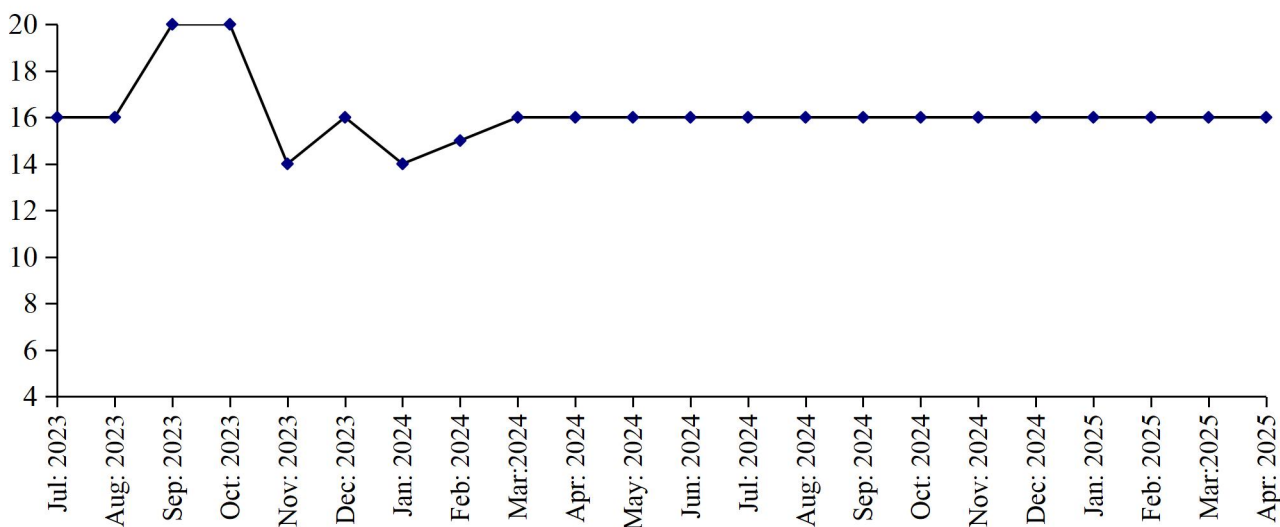


Table No: 30: MANUFACTURING ACTIVITY OF LEATHER TANNING INDUSTRY

Year (July-June) / Month	No. Of Reporting Units	P R O D U C T I O N		EMPLOYMENT (NOS.) *	
		Upper Leather (000 Sq. Mtrs)	Sole Leather (M. Tons)	Total	Production Workers
2008-09	19	5980	156	1195	910
2009-10	60	10465	215	1711	1325
2010-11	100	12999	381	2234	1813
2011-12	100	11154	417	2133	1709
2012-13	100	10169	356	1824	1318
2013-14	100	10766	287	2404	1703
2014-15	100	10071	241	2539	1821
2015-16	100	9563	198	2550	1935
2016-17	106	10330	156	2956	2174
2017-18	107	11150	168	3071	2248
2018-19	107	11045	168	2938	2135
2019-20	108	9340	168	2787	2006
2020-21	108	7956	168	2467	1755
2021-22	106	8852	176	2261	1591
2022-23	106	9622	192	2245	1612
2023-24	106	9229	195	2315	1640
(Jul: - Apr:)	<u>106</u>	<u>7710</u>	<u>163</u>	<u>2314</u>	<u>1638</u>
Jul:	106	712	16	2273	1594
Aug:	106	732	16	2293	1610
Sept:	106	734	20	2302	1621
Oct:	106	756	20	2317	1640
Nov:	106	781	14	2320	1648
Dec:	106	799	16	2328	1653
Jan:	106	800	14	2326	1652
Feb:	106	810	15	2326	1652
Mar:	106	787	16	2326	1652
Apr:	106	799	16	2328	1653
May	106	768	16	2313	1650
Jun:	106	751	16	2315	1650
<u>2023-24</u>					
(Jul: - Apr:)	<u>106</u>	<u>7741</u>	<u>160</u>	<u>2322</u>	<u>1670</u>
Jul:	106	755	16	2328	1675
Aug:	106	759	16	2330	1687
Sep:	106	765	16	2340	1690
Oct:	106	770	16	2342	1692
Nov:	106	768	16	2340	1690
Dec:	106	765	16	2344	1694
Jan:	106	804	16	2305	1657
Feb:	106	816	16	2330	1676
Mar:	106	786	16	2330	1676
Apr:	106	753	16	2229	1564

* = Monthly average over the ten month.

PERFORMANCE OF PAPER & PAPER BOARD INDUSTRY

Report for the month of April 2025

Coverage

This report covers forty seven (47) factories of Paper & Paper Board Industries in the Punjab Province.

Production

Forty seven factories produced 17472 Metric Tons of paper, which comprises of 8280 Metric Tons of writing, 3702 Metric Tons of printing and 5490 Metric Tons of packing and other 37599 Metric Tons of paper board during the month. The production of paper and paper board was 13.4% and 11.0% lower than the last month respectively.

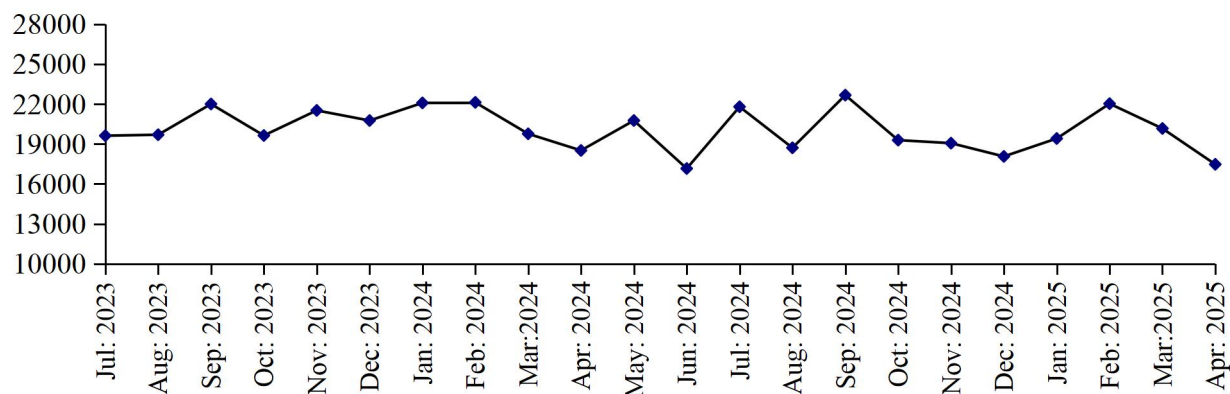
Employment

Total employment during the month was 4813 persons, which was 1.7% lower the last month. Out of this total employment, 3534 were production workers.

PRODUCTION OF PAPER & PAPER BOARD

July 2023 to April 2025

(M. Tons)



(M. Tons)

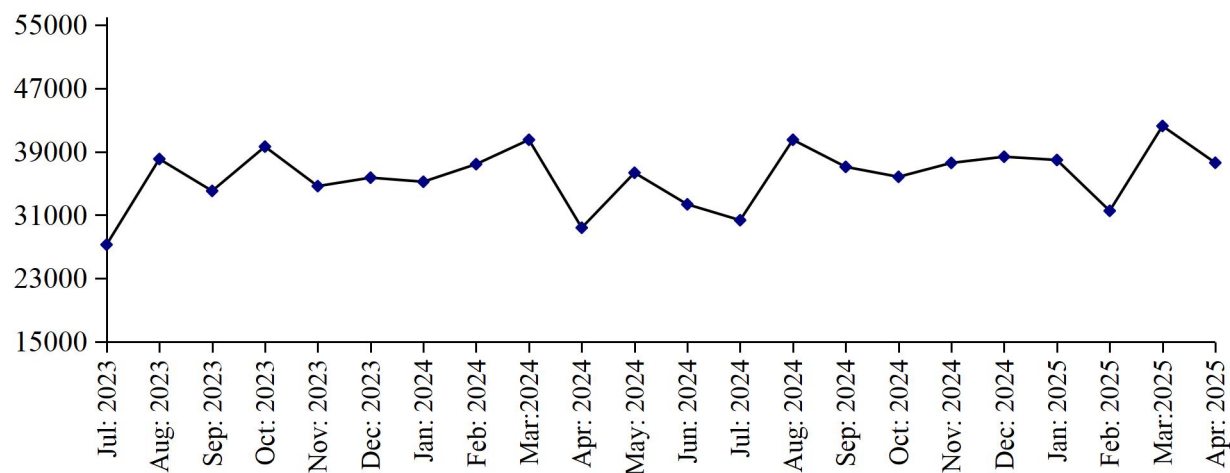


Table No: 31 MANUFACTURING ACTIVITY OF PAPER & PAPER BOARD INDUSTRY.

Year (July-June)/ Month	No. Of Reporting Units	P R O D U C T I O N (M.Tons)			EMPLOYMENT (NOS.) *	
		Paper	Paper Board	Paper & Paper Board	Total	Production Workers
2008-09	34	244838	165797	410635	5835	4845
2009-10	41	240775	165269	406044	5398	4178
2010-11	41	220587	194084	414671	5787	3945
2011-12	41	236217	287645	523862	5403	3539
2012-13	43	218980	376138	595118	5702	3774
2013-14	43	205252	457794	663046	6031	4053
2014-15	46	190193	407658	597851	6086	4370
2015-16	50	219040	370427	589467	6169	4629
2016-17	49	226251	398950	625201	6065	4614
2017-18	48	237723	451717	689440	6130	4570
2018-19	47	225544	429716	655260	5567	4052
2019-20	47	220495	441640	662135	5112	3683
2020-21	47	191962	488542	680504	5101	3660
2021-22	47	204434	526353	730787	5026	3600
2022-23	47	232450	438353	670803	5102	3653
2023-24	47	243683	420773	664456	5111	3682
(Jul – Apr:)	<u>47</u>	<u>205762</u>	<u>351946</u>	<u>557708</u>	<u>5135</u>	<u>3702</u>
Jul:	47	19625	27261	46886	5109	3688
Aug:	47	19697	38076	57773	5402	3838
Sep:	47	22007	34049	56056	5108	3688
Oct:	47	16640	39637	59277	5114	3693
Nov:	47	21525	34653	56178	5104	3686
Dec:	47	20765	35720	56485	5107	3680
Jan:	47	22090	35205	57295	5112	3697
Feb:	47	22128	37425	59553	5112	3697
Mar:	47	19769	40520	60289	5103	3691
Apr:	47	18516	29400	47916	5082	3659
May	47	20765	36474	57239	5056	3650
Jun:	47	17156	32353	49509	4919	3515
<u>2024-25</u>						
(Jul – Apr:)	<u>47</u>	<u>198696</u>	<u>369038</u>	<u>567734</u>	<u>4900</u>	<u>3513</u>
Jul:	47	21800	30352	52152	4916	3515
Aug:	47	18715	40502	59217	4889	3489
Sep:	47	22675	37083	59758	5023	3624
Oct:	47	19292	35825	55117	4961	3560
Nov:	47	19063	37582	56645	5023	3624
Dec:	47	18065	38362	56427	4792	3393
Jan:	47	19414	37954	57368	4788	3390
Feb:	47	22032	31535	53567	4900	3501
Mar:	47	20168	42244	62412	4896	3496
Apr:	47	17472	37599	55071	4813	3534

* = Monthly average over the ten month.

PERFORMANCE OF LIGHT ENGINEERING INDUSTRY

Report for the month of April 2025

RE-ROLLED STEEL

Coverage

This report covers Forty One (41) factories of Re-Rolled Steel in the Punjab Province.

Production

Forty one factories covered under the survey produced 24701 Metric Tons of steel bars/angles during April 2025, which was 1.9% higher than the last month.

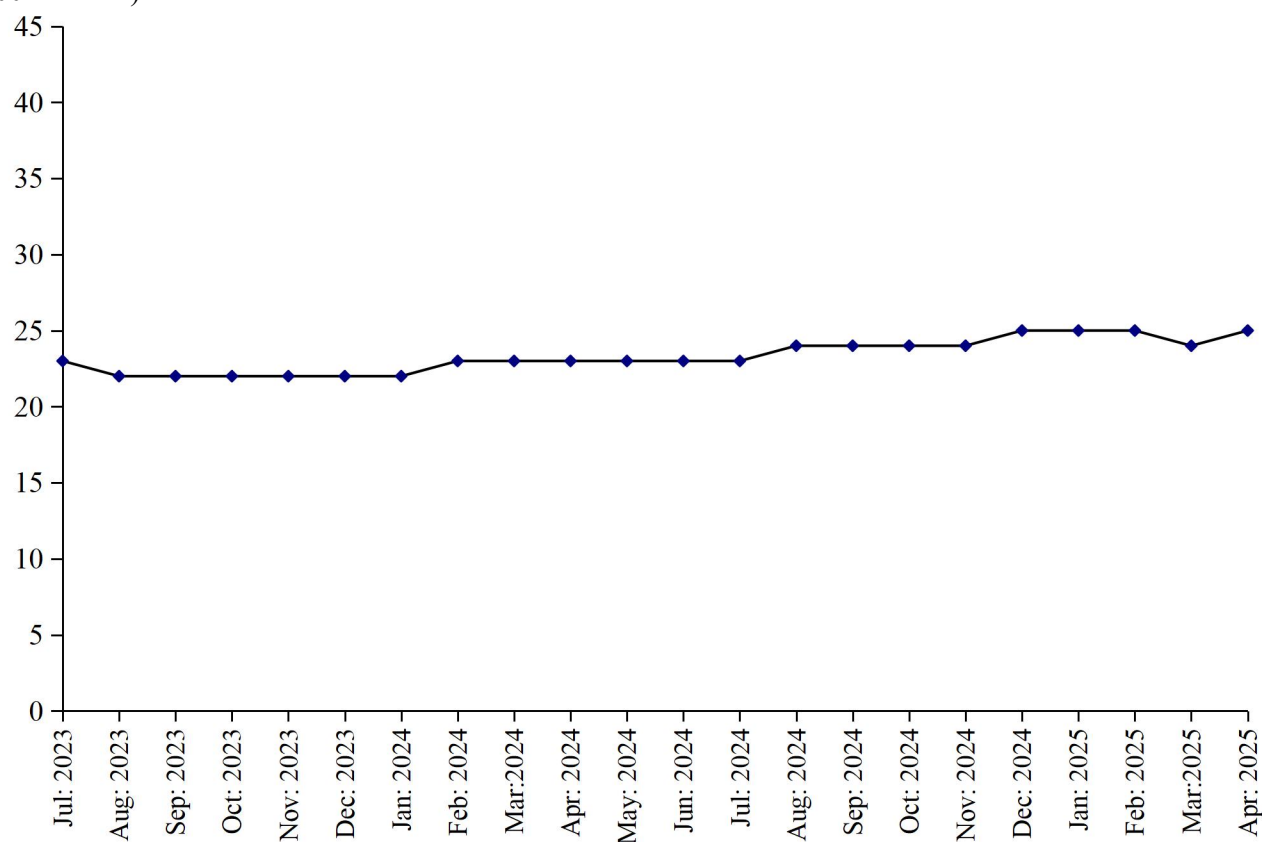
Employment

Total employment in the industry during the month was 1112, which was 0.1% higher than the last month. Out of this total employment, 804 were production workers.

PRODUCTION OF RE-ROLLED STEEL

July 2023 to April 2025

(000 M. Tons)



BICYCLES

Coverage

This report covers three (3) factories of Bicycles in the Punjab.

Production

Three factories being covered in the survey manufactured and assembled 14485 complete bicycles during April 2025, which was 0.6% lower than the last month.

Employment

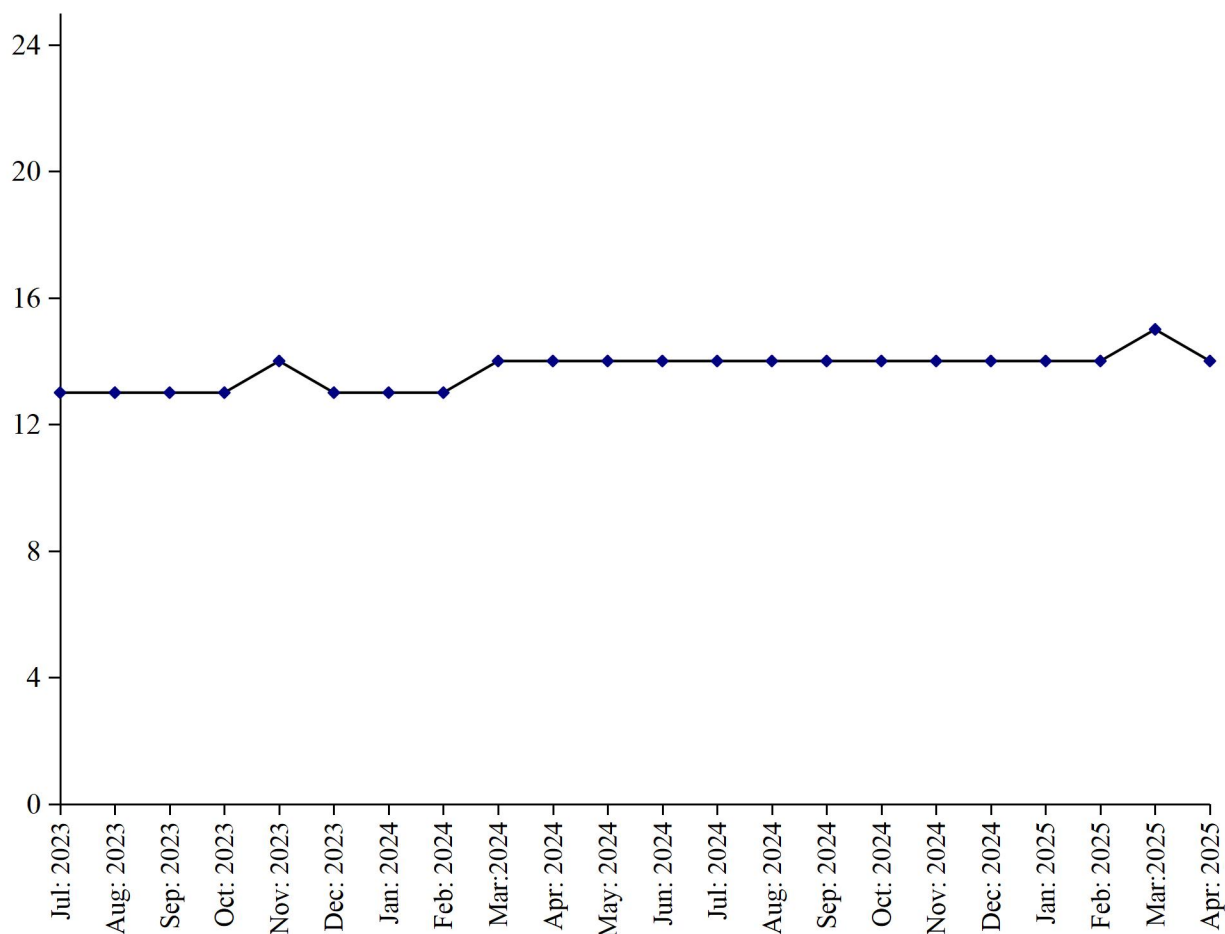
Total employment in these factories during the month was 686, which was same as the last month.

Out of this total employment, 527 were production workers.

PERFORMANCE OF BICYCLES

July 2023 to April

(000 M. Tons)



2025

ELECTRIC FANS

Coverage

This report covers one hundred and twenty six (126) factories of Electric Fans in the Punjab Province.

Production

One hundred and twenty six factories covered under the survey manufactured 244826 (ceiling fans, 162845 pedestal fans, 39997 and other fans 41984) during March, 2025, which was 4.0% higher than the last month.

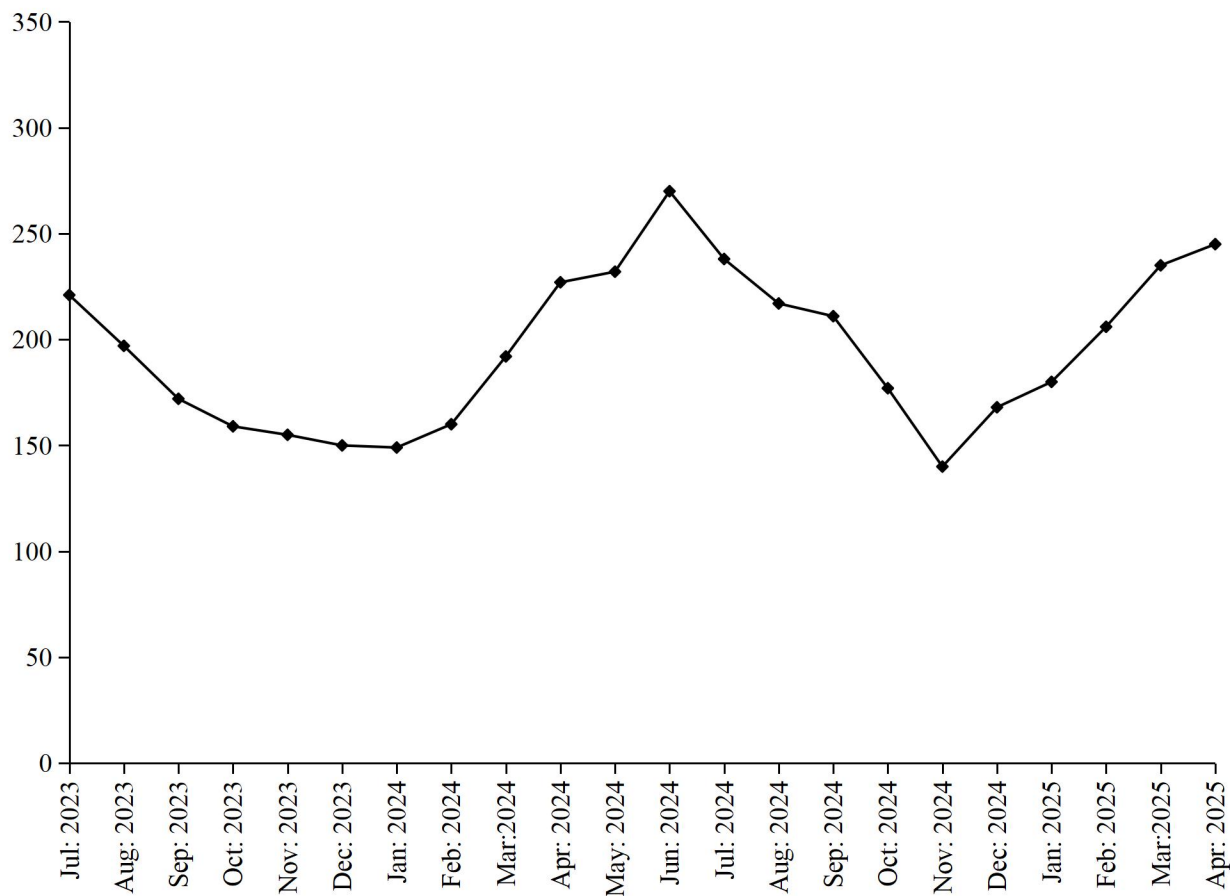
Employment

These factories reported 2295 total employment during the month, which was 0.2% higher than the last month. Out of this total employment, 1840 were production workers.

PERFORMANCE OF ELECTRIC FANS

July 2023 to April 2025

(000 Nos.)



ELECTRIC MOTORS

Coverage

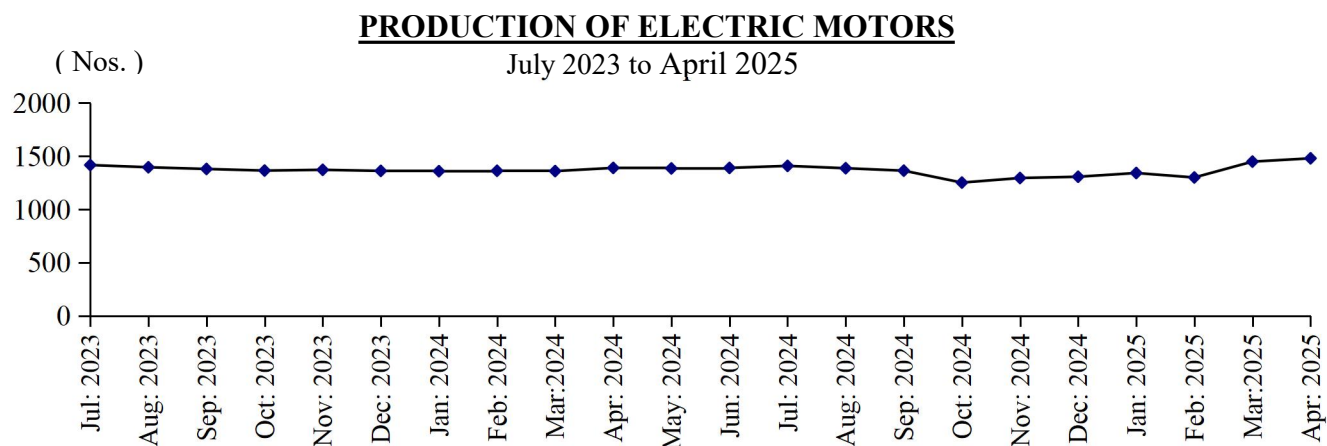
This report covers thirty (30) factories of Electric Motors in the Punjab Province.

Production

Thirty factories covered under the survey manufactured 1480 electric motors during the month, which was 2.1% higher than the last month.

Employment

Total Employment in these factories during the month which was 165, which was 0.7% higher than the last month. Out of this total employment, 135 were production workers.



DIESEL ENGINES

Coverage

This report covers fifteen (15) factories of Diesel Engines in the Punjab Province.

Production

These fifteen factories covered under the survey and 123 complete diesel engines manufactured during the month, which was 3.4% higher than the last month.

Employment

Total employment in these factories during the month was 23, which is same as it was in previous month. Out of this total employment, 16 were production workers.

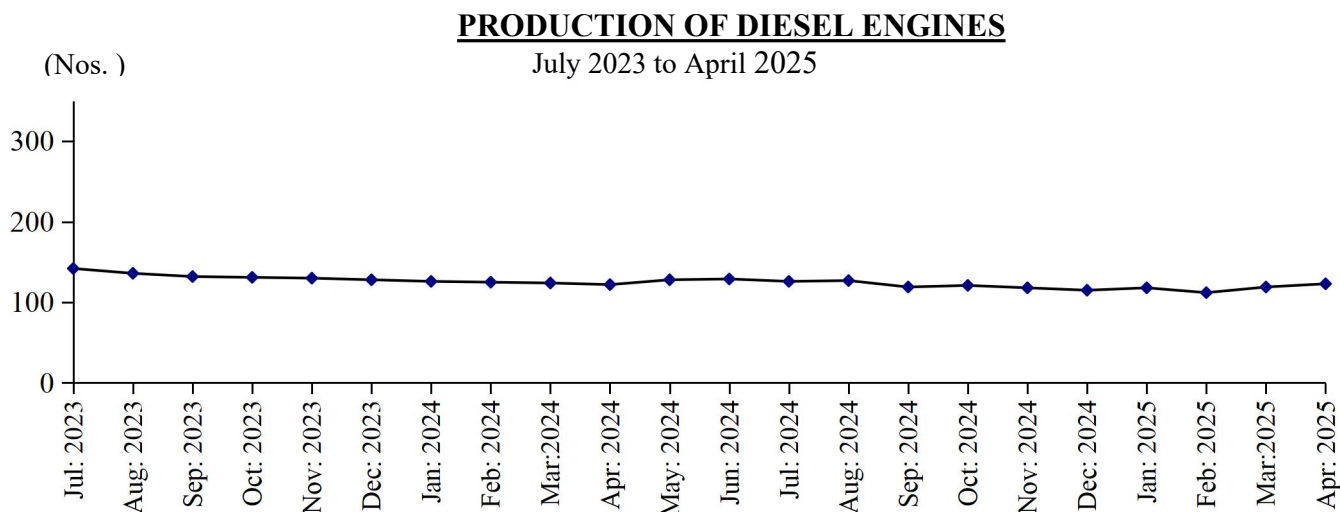


Table No: 32 MANUFACTURINGACTIVITYOFLIGHT ENGINEERING INDUSTRY

Year (July – June) / Month	Re-rolled Steel Bars / Angles (M. Tons)	Bicycles (Nos.)	Electric Fans (Nos.)	Electric Motors (Nos.)	Diesel Engines (N0s.)
2008-09	343506	419897	1697140	6604	16906
2009-10	321369	447207	2128884	7068	20157
2010-11	312433	345272	1940346	7667	10285
2011-12	289874	262096	1858883	5857	2861
2012-13	266669	232979	1909412	5752	2219
2013-14	257569	206459	1870475	9906	2117
2014-15	264406	210931	1870291	9013	2045
2015-16	320769	198966	1970506	7319	495
2016-17	367619	200218	2461369	9206	1554
2017-18	485131	202168	2498919	41793	1120
2018-19	382890	173545	2508085	56819	908
2019-20	289350	141125	2124301	39312	1294
2020-21	312922	79310	2498634	30054	1644
2021-22	308749	141236	2589903	22832	1941
2022-23	292280	146454	2181562	18756	2127
2023-24	269320	159033	2283408	16539	1553
(Jul: – Apr:)	<u>223136</u>	<u>131398</u>	<u>1782063</u>	<u>13764</u>	<u>1296</u>
Jul:	23257	12584	220916	1417	142
Aug:	22105	12698	196778	1396	136
Sep:	21865	12961	172135	1380	132
Oct:	21822	13061	159472	1365	131
Nov:	21899	13089	154947	1372	130
Dec:	22010	13145	150154	1362	128
Jan:	22101	13214	148714	1359	126
Feb:	22546	13404	160115	1363	125
Mar:	22846	13502	192146	1360	124
Apr:	22685	13740	226686	1390	122
May	23008	13802	231587	1385	128
Jun:	23176	13833	269758	1390	129
<u>2024-25</u>					
(Jul: – Apr:)	<u>241357</u>	<u>141004</u>	<u>2017172</u>	<u>13585</u>	<u>1198</u>
Jul:	23362	13817	238113	1409	126
Aug:	23625	13831	217357	1387	127
Sep:	23503	13885	210869	1364	119
Oct:	23716	13945	177099	1252	121
Nov:	23981	13988	139638	1295	118
Dec:	24781	14024	167745	1307	115
Jan:	24928	14110	180281	1342	118
Feb:	24509	14348	205891	1300	112
Mar:	24251	14571	235353	1449	119
Apr:	24701	14485	244826	1480	123

Table No: 33 TOTAL EMPLOYMENT (Nos.) OF LIGHT ENGINEERING INDUSTRY*

Year (July – June)/ Month	Re-rolled Steel Bars / Angles (M.Tons)	Bicycles (Nos.)	Electric Fans (Nos.)	Electric Motors (Nos.)	Diesel Engines (N0s.)
2008-09	1103	2257	1894	69	200
2009-10	1134	2124	2124	63	223
2010-11	1218	2009	2120	64	191
2011-12	1193	1612	2351	64	155
2012-13	1188	1318	2172	58	147
2013-14	1269	1214	2307	64	154
2014-15	1299	1060	2208	63	154
2015-16	1317	907	2090	65	150
2016-17	1372	885	2325	121	146
2017-18	1310	883	2549	130	133
2018-19	1304	759	2673	158	52
2019-20	1013	751	1817	191	22
2020-21	1067	686	2141	197	20
2021-22	1077	686	2229	213	21
2022-23	1091	686	2092	174	24
2023-24	1086	686	2159	162	24
(Jul: - Apr:)	<u>1084</u>	<u>686</u>	<u>2146</u>	<u>161</u>	<u>24</u>
Jul:	1081	686	2100	163	24
Aug:	1081	686	2068	163	24
Sep:	1085	686	2183	163	24
Oct:	1081	686	2160	163	24
Nov:	1078	686	2133	163	24
Dec:	1082	686	2137	163	24
Jan:	1083	686	2142	163	24
Feb:	1085	686	2159	160	24
Mar:	1089	686	2179	160	24
Apr:	1092	686	2204	160	24
May	1094	686	2240	161	24
Jun:	1111	686	2250	161	24
<u>2024-25</u>					
(Jul: - Apr:)	<u>1110</u>	<u>686</u>	<u>2231</u>	<u>163</u>	<u>23</u>
Jul:	1102	686	2236	165	23
Aug:	1105	686	2219	163	23
Sep:	1107	686	2214	162	23
Oct:	1109	686	2205	161	23
Nov:	1113	686	2202	160	23
Dec:	1113	686	2230	160	23
Jan:	1115	686	2236	161	23
Feb:	1114	686	2240	161	23
Mar:	1111	686	2290	164	23
: Apr:	1112	686	2295	165	23

* = Monthly averages over the ten month.

Table No: 34 PRODUCTION WORKERS (Nos.) OF LIGHT ENGINEERING INDUSTRY *

Year (July – June)/ Month	Re-rolled Steel Bars / Angles (M.Tons)	Bicycles (Nos.)	Electric Fans (Nos.)	Electric Motors (Nos.)	Diesel Engines (Nos.)
2008-09	757	1905	1542	60	160
2009-10	782	1892	1748	57	154
2010-11	870	1843	1709	57	126
2011-12	857	1540	1904	57	99
2012-13	843	1289	1761	50	95
2013-14	905	1161	1850	55	99
2014-15	920	992	1745	54	100
2015-16	934	836	1658	56	97
2016-17	976	820	1865	113	93
2017-18	926	804	1994	119	86
2018-19	916	696	2066	122	34
2019-20	706	679	1425	147	15
2020-21	780	527	1735	151	14
2021-22	786	527	1815	157	16
2022-23	798	527	1823	145	16
2023-24	782	527	1737	135	16
(Jul: - Apr:)	<u>782</u>	<u>527</u>	<u>1713</u>	<u>135</u>	<u>16</u>
Jul:	802	527	1765	137	16
Aug:	802	527	1737	137	16
Sep:	774	527	1726	137	16
Oct:	774	527	1705	137	16
Nov:	771	527	1701	136	16
Dec:	775	527	1683	137	16
Jan:	775	527	1685	137	16
Feb:	780	527	1694	137	16
Mar:	784	527	1694	133	16
Apr:	784	527	1743	133	16
May	791	527	1798	134	16
Jun:	793	527	1807	135	16
<u>2023-24</u>					
(Jul: - Apr:)	<u>803</u>	<u>527</u>	<u>1792</u>	<u>134</u>	<u>16</u>
Jul:	795	527	1795	137	16
Aug:	798	527	1779	135	16
Sep:	799	527	1776	134	16
Oct:	801	527	1769	133	16
Nov:	806	527	1760	131	16
Dec:	806	527	1790	131	16
Jan:	809	527	1796	132	16
Feb:	810	527	1800	132	16
Mar:	803	527	1822	134	16
: Apr:	804	527	1840	135	16

* = Monthly averages over the ten month.

PERFORMANCE OF PHARMACEUTICAL INDUSTRY

Report for the month of April 2025

Coverage

This report covers thirty six (36) Pharmaceutical Industries in the Punjab Province.

Production

Overall production of these 36 pharmaceutical factories during the month was 2.5% and 2.7% higher than April, 2025 and April 2024 respectively.

These factories produced 298584 thousand Nos. of Tablets, 1576 thousand Ltrs., of Liquids/Syrups, 55101 thousand Nos. of Capsules, 13769 thousand Nos. of Injections, 53226 kgs. of Ointments and 3 thousand Ltrs. of Galanicals (Tincture/Spirits). The production of Capsules, Ointment, 0.5%, 9.8% higher.

whereas the production of Tablets, Liquids, Capsules, and Injections was 3.8%, 4.1%, 0.2% and lower than the last month respectively.

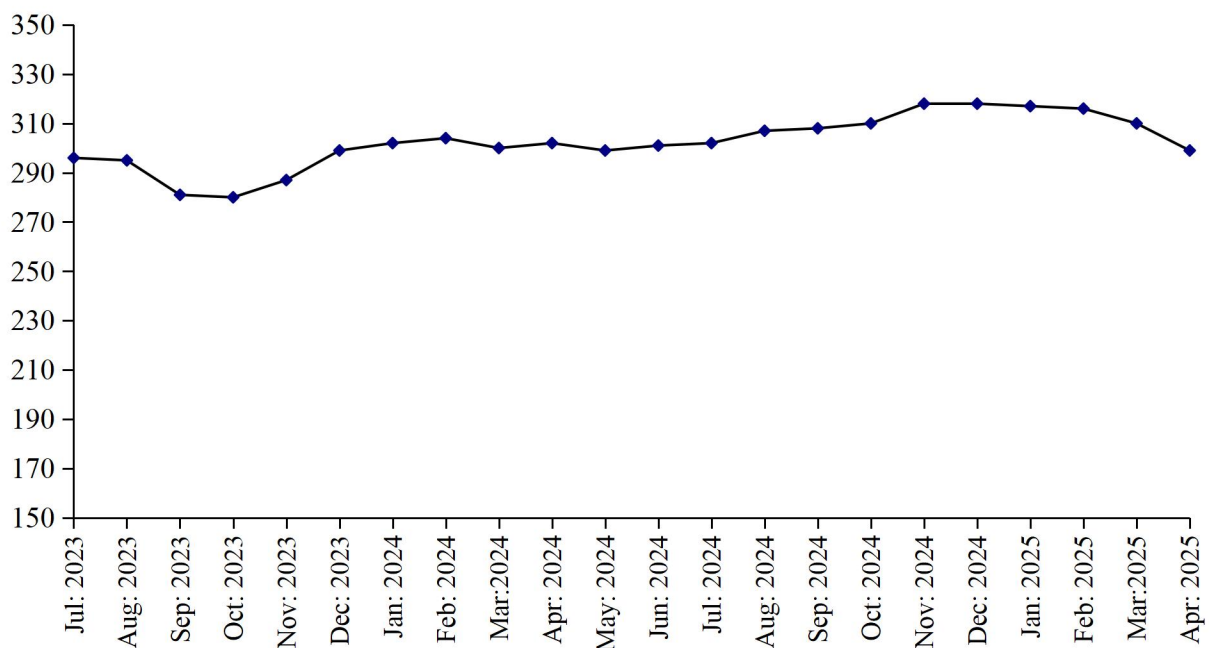
Employment

Total employment in these factories during the month was 8104 which is 0.1% higher than the last month. Out of this total employment 3316 were production workers. Total wages/salaries during the month were 305 million rupees.

(000 Nos.)

PRODUCTION OF TABLETS

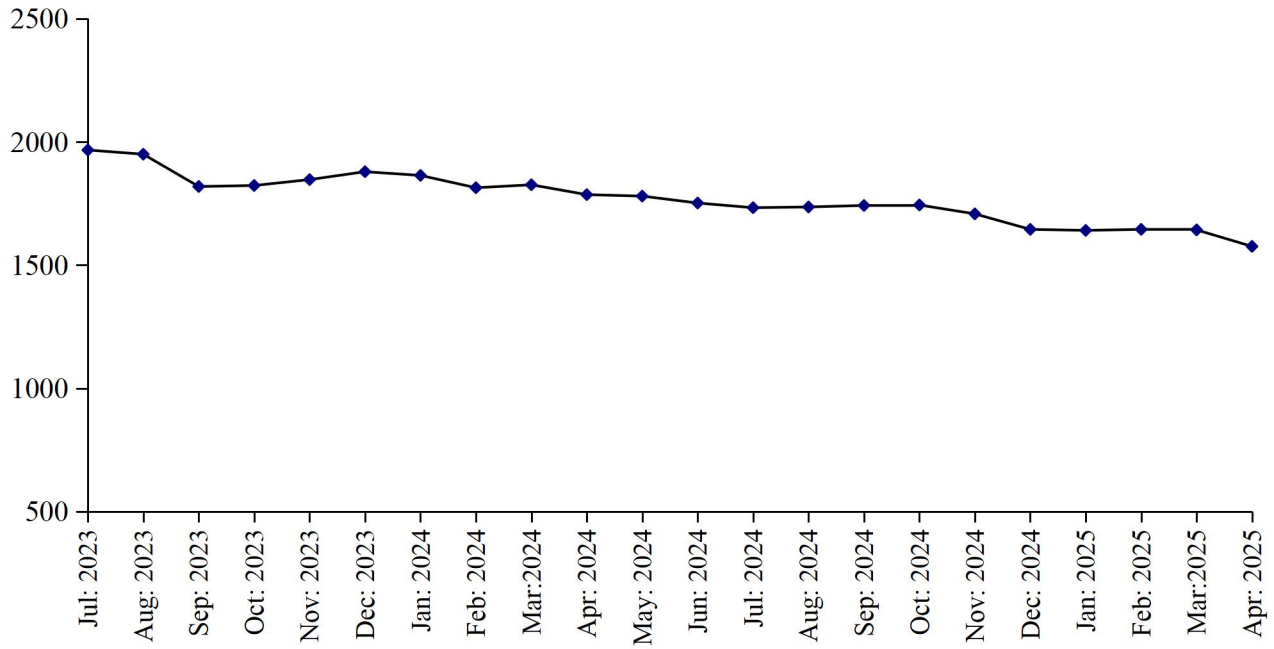
July 2023 to April 2025



PRODUCTION OF LIQUIDS

July 2023 to April 2025

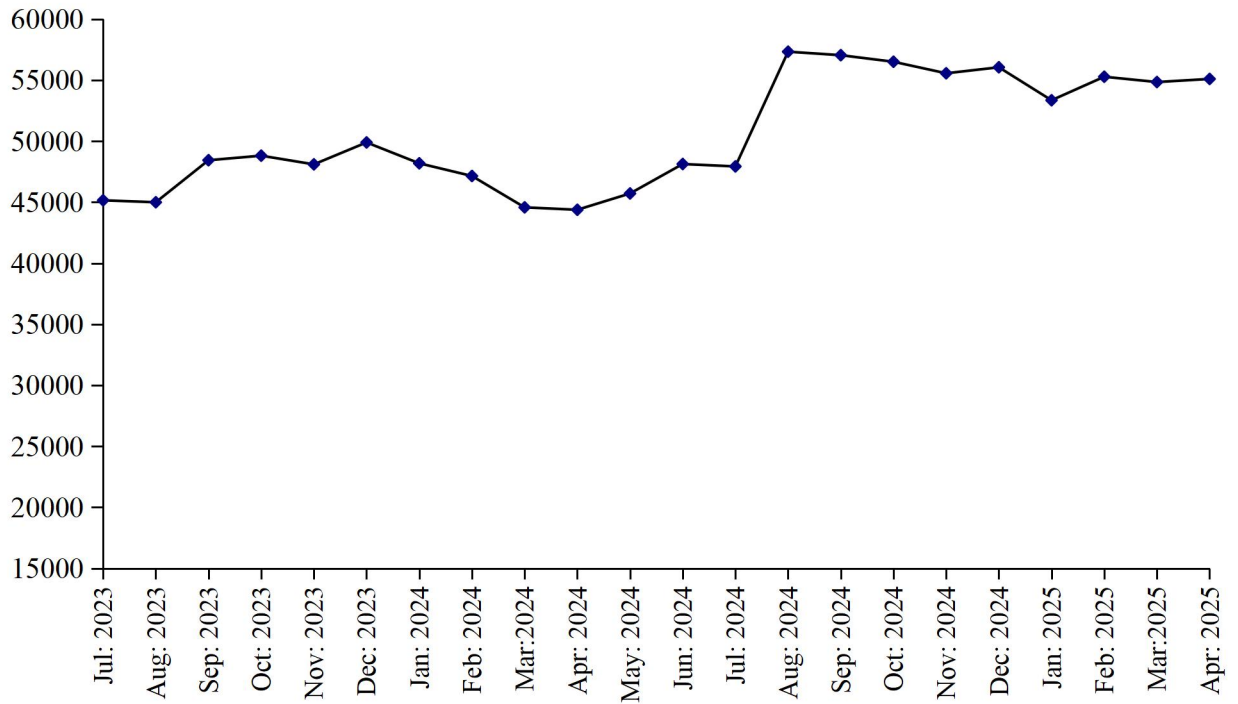
(000 Nos.)



PRODUCTION OF CAPSULES

July 2023 to April 2025

(000 Nos.)



PRODUCTION OF INJECTIONS

July 2023 to April 2025

(000 Nos.)

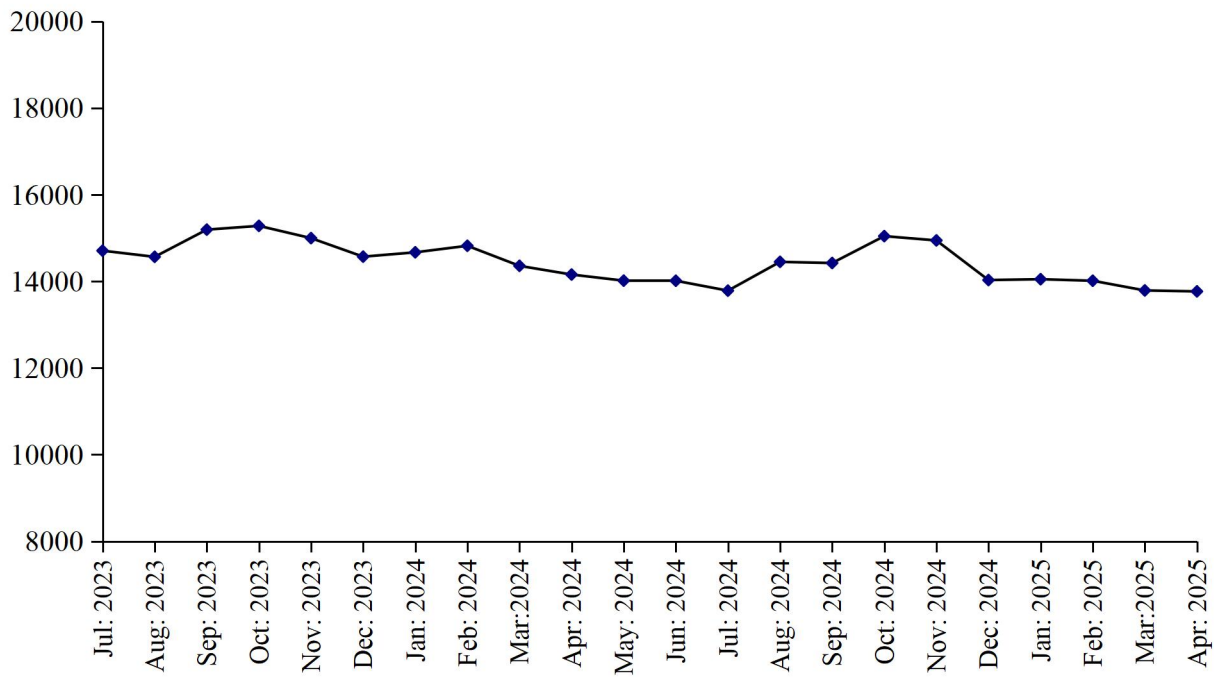


Table 35:MANUFACTURING ACTIVITY OF PHARNMACEUTICAL INDUSTRY

Year (July – June) / Month	No. Of Reporting Factories	P R O D U C T I O N					
		Tablets (000 Nos.)	Liquids/ Syrups (000Ltrs.)	Capsules (000 Nos.)	Injections (000 Nos.)	Ointments (Kgs.)	Galanicals Tinctures/ Spirits (000 Ltrs.)
2008-09	40	2286638	21267	121093	89615	105595	73
2009-10	40	2373104	23222	134594	99608	189148	62
2010-11	41	2486495	25211	165294	109708	187430	50
2011-12	41	2487861	25546	224249	132544	209841	41
2012-13	40	2873661	35457	339450	119598	196597	34
2013-14	36	2639613	16264	261919	137051	238299	185
2014-15	36	2593592	18838	310520	140827	229778	75
2015-16	36	2823449	21636	339151	133352	242367	46
2016-17	36	2530717	24085	295120	194717	732361	343
2017-18	35	2893883	15602	371962	149607	570468	121
2018-19	36	2826410	14207	420278	144788	567249	39
2019-20	36	2847315	14011	447276	119438	640721	74
2020-21	36	3096704	17504	481498	110866	595075	69
2021-22	36	3249998	15091	501673	180141	518897	54
2022-23	36	3195113	19346	513243	187290	647041	36
2023-24	36	3546637	22107	563550	175372	616735	27
(Jul: - Apr:)	<u>36</u>	<u>2946533</u>	<u>18575</u>	<u>469452</u>	<u>147340</u>	<u>521128</u>	<u>23</u>
Jul:	36	295912	1967	45157	14709	52097	3
Aug:	36	295092	1950	44997	14567	54447	3
Sep:	36	280967	1819	48440	15195	52675	2
Oct:	36	279900	1823	48562	15282	51915	2
Nov:	36	287402	1847	48102	14999	52049	2
Dec:	36	298724	1879	49898	14578	51458	3
Jan:	36	302102	1864	48187	14671	52119	2
Feb:	36	304440	1814	47149	14822	53003	2
Mar:	36	300476	1826	44579	14359	51549	2
Apr:	36	301518	1786	44381	14158	49816	2
May	36	298875	1780	45717	14017	46328	2
Jun:	36	301229	1752	48129	14015	49279	2
<u>2023-24</u>							
(Jul: - Apr:)	<u>36</u>	<u>3104182</u>	<u>16813</u>	<u>559026</u>	<u>142308</u>	<u>479141</u>	<u>28</u>
Jul:	36	301913	1733	57933	13786	48251	2
Aug:	36	307097	1736	57333	14451	48507	2
Sep:	36	307739	1742	57048	14424	47999	2
Oct:	36	310114	1744	56509	15045	48251	2
Nov:	36	317633	1708	55564	14946	51781	2
Dec:	36	317950	1645	56056	14031	47051	4
Jan:	36	316845	1641	53355	14050	47693	4
Feb:	36	316088	1645	55281	14015	47891	4
Mar:	36	310221	1643	54846	13791	48491	3
Apr:	36	298584	1576	55101	13769	53226	3

Table 36: EMPLOYMENT AND WAGES / SALARIES OF PHARMACEUTICAL INDUSTRY

Year (July – June) / Month	No. Of Reporting Factories	E M P L O Y M E N T (Nos.)			WAGES /SALARIES (000 Rs.)	
		Total	Production Workers	Office Staff	Total	Production Workers
2008-09	40	5737	3115	2622	75446	35208
2009-10	40	5967	3294	2673	84295	41482
2010-11	41	7468	3475	3993	109964	38722
2011-12	41	7802	3518	4284	122250	38078
2012-13	40	7619	3397	4222	128323	37873
2013-14	36	7255	3043	4212	141281	37844
2014-15	36	7271	3136	4135	149144	37763
2015-16	36	6887	2887	4000	142875	38347
2016-17	36	7069	3338	3731	166039	42770
2017-18	35	7190	3095	4095	180431	46461
2018-19	36	7287	3080	4207	186677	48238
2019-20	36	7926	3244	4682	215121	53959
2020-21	36	7726	3388	4338	241910	59134
2021-22	36	8092	3318	4774	263957	61029
2022-23	36	8048	3290	4758	277034	64865
2023-24	36	8060	3294	4765	303965	73620
(Jul: - Apr:)	<u>36</u>	<u>8057</u>	<u>3295</u>	<u>4762</u>	<u>302245</u>	<u>72815</u>
Jul:	36	8030	3321	4709	293999	69000
Aug:	36	8033	3324	4709	293800	69119
Sep:	36	8054	3292	4762	293200	69219
Oct:	36	8054	3290	4764	294000	69300
Nov:	36	8060	3297	4763	303010	73029
Dec:	36	8063	3300	4763	305110	74000
Jan:	36	8065	3302	4763	308510	75483
Feb:	36	8071	3271	4800	309500	76001
Mar:	36	8067	3272	4795	310200	76200
Apr:	36	8070	3275	4795	311115	76800
May	36	8072	3276	4796	312546	77632
Jun:	36	8084	3304	4780	312599	77700
<u>2024-25</u>						
(July-Apr:)	<u>36</u>	<u>8098</u>	<u>3314</u>	<u>4784</u>	<u>304556</u>	<u>74394</u>
Jul:	36	8086	3307	4779	302969	73706
Aug:	36	8090	3310	4780	304568	74000
Sep:	36	8095	3313	4782	304210	74006
Oct:	36	8097	3314	4783	302909	74000
Nov:	36	8098	3315	4783	304316	74105
Dec:	36	8100	3318	4782	304616	74302
Jan:	36	8102	3320	4782	305119	74932
Feb:	36	8100	3318	4782	305600	74999
Mar:	36	8103	3315	4788	305400	74898
Apr:	36	8104	3316	4788	305800	75001

* = Monthly average over the ten month.

**LIST OF IMPORTANT TELEPHONES
BUREAU OF STATISTICS, PUNJAB AND ITS FIELD OFFICES**

NAME OF OFFICERS	DESIGNATION	OFFICE TELEPHONE
Sajid Rasul	Director General	042-99232901
Saira Abid	Deputy Director (CIS)	042-99232907
Humera Qasim	Assistant Director (CIS)	-do-
Sana Ashraf	Statistical Officer (CIS)	-do-
Muhammad Kashif	Statistical Officer (CIS)	-do-
Inamullah	Statistical Officer (CIS)	-do-
Muhammad Irfan	Statistical Officer (CIS)	-do-
Muhammad Haris	Statistical Officer (CIS)	-do-
Zia Ahmad Babar	Statistical Officer (CIS)	-do-
DESIGNATION	BUREAU'S FIELD OFFICES/ADDRESS	
Deputy Director	Tosha Khana Near Cholistan Development Authority, Bahawalpur	062-9250193
Deputy Director	House No. 70-A, Khyaban-e-Sarwar, Dera Ghazi Khan	064-9330108
Deputy Director	2nd Floor Azam Plaza, Near Passport Office, Bukhari Road, Gujranwala	055-9200419
Deputy Director	P-45, Main Road, Al Faiz Colony, Satiana Road Faisalabad	041-9330531
Deputy Director	Near Circuit House, Multan	061-9200930
Deputy Director	Abad Complex Murree Road, Rawalpindi	051-9292035
Deputy Director	52 Umar Park, Sargodha	048-3765387
Deputy Director	34-H Shadman Town, Sahiwal	0404-4507560
Assistant Director	House No. 24, Z-Block, Model Town, Bahawalnagar	063-9330002
Assistant Director	Mohallah Mandi Town, House No.198 Block No. 12 Near Pracha Filling Station, Jhang Road, Bhakkar	0453-9200338
Assistant Director	Street No.4 2nd Floor Mohallah Shumali Chah Loharn Behkari Road, Chakwal	0543-554086
Assistant Director	House No.720-A Gulberg Colony, Kasur	049-2723615
Assistant Director	House No. 190, Employees Colony, Layyah	0606-920273
Assistant Director	Gallah Huntar Pura, Opposite Larri Adda, Christian Town, Sialkot	052-4291219
Assistant Director	Opposite Govt. Vocational College, Nabi Pura, Hiran Minar Road, Sheikhupura	056-3791770